

Delivering a Long-term Vision for Lake Dunstan

A report for the Lake Dunstan Charitable Trust



Produced by Shaping our Future— June 2022

Shaping Our
Future

TABLE OF CONTENTS

- 1.Executive Summary and Key Recommendations4
- 2.Introduction.....7
- 3. Who are Shaping our Future?8
- 4. The Engagement Process9
- 5. Background Information and Documents10
- 6. The In Person/ Online Survey11
- 7. The online Workshops.....15
- 8. The School Visits18
- 9. Setting the Priorities – Use of the Ethelo Online Platform21
- 10.Summary of Findings.....30
- 11. Recommendations32
- 12. Feedback from presentation of findings to public workshops.....34
- APPENDICES.....35
- APPENDIX 1 – PRINTED VERSION OF THE ONLINE SURVEY.....36
- APPENDIX 2 – POWERPOINT PRESENTATION FOR THE ONLINE WORKSHOPS37
- APPENDIX 3 – ETHELO COMMENTS42
- APPENDIX 4 – SURVEY RESPONSES IN DETAIL.....68
- APPENDIX 5 – LDCT 2021 SURVEY SUMMARY94
- APPENDIX 6 – CROMWELL COMMUNITY PLAN94
- APPENDIX 7 – CROMWELL SPATIAL PLAN94



Image: the now mainly unserviceable Kawarau Arm mooring pontoons at Butchers Drive, Cromwell.

1.Executive Summary and Key Recommendations

Between January and July 2022, Shaping our Future (SoF) were contracted to undertake long term community visioning work for the Lake Dunstan Charitable Trust (LDCT).

A combination of face to face and online engagement processes captured input from over 350 members of the public and built on the findings of a survey of over 250 people previously undertaken by the LDCT.

The findings of the engagement were distilled into 15 current-day issues, 15 value statements, and 15 descriptors of long-term success and these were then prioritised by 268 members of the public using the Ethelo engagement platform over a 4-week period.

The results of the engagement and community priorities have been used to describe simple vision and values statements for Lake Dunstan and make 5 key recommendations as the first steps towards meeting the vision. The vision, values and recommendations were presented and validated at a public workshop held on 19 July 2022 and attended by around 60 participants.

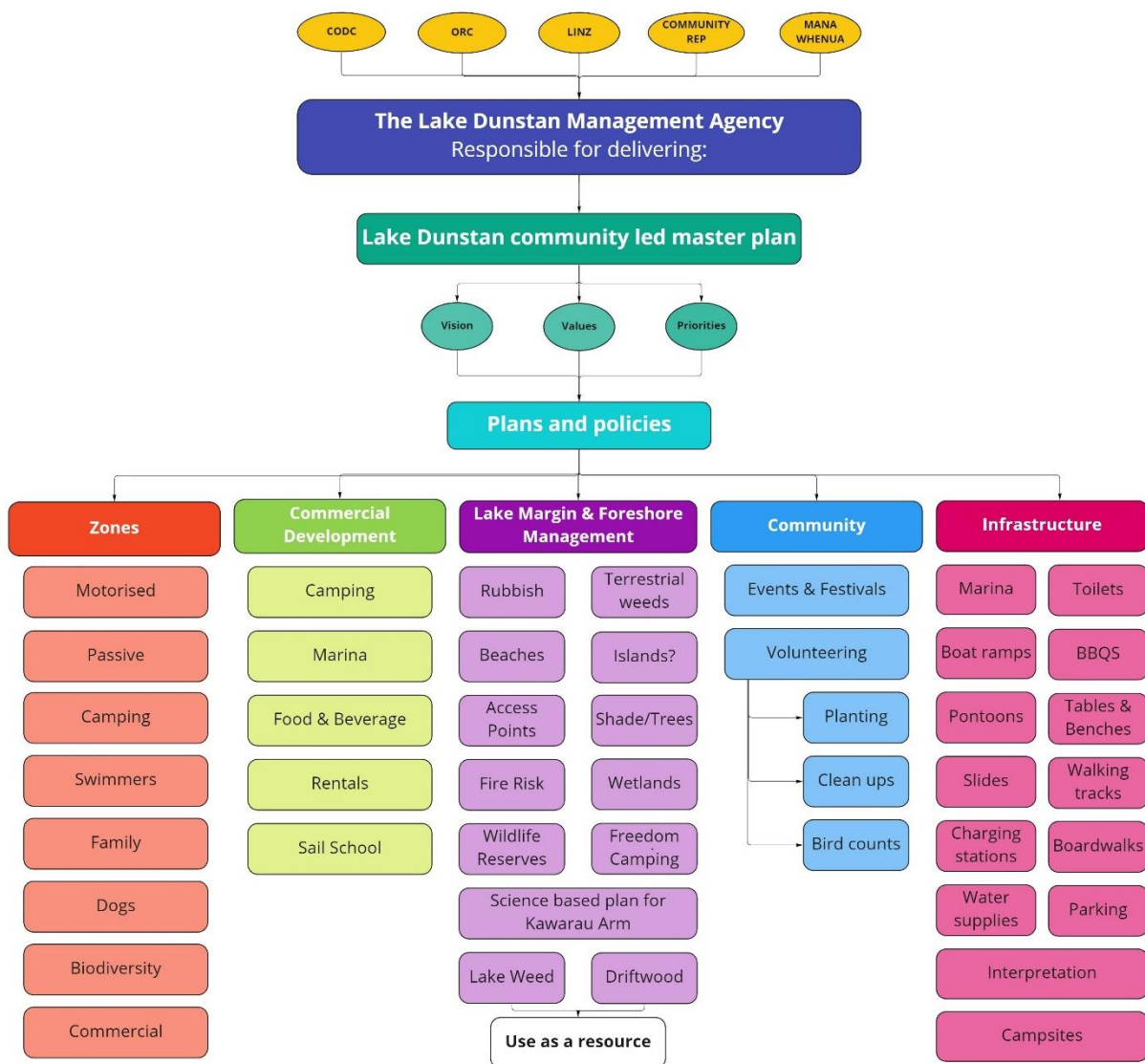


Fig 1. An Illustration of the elements that will deliver long term success for Lake Dunstan

This report and its recommendations now passes to the LDCT for custodianship and implementation.

The vision for Lake Dunstan and its margins:

In 2050, Lake Dunstan is effectively managed and directed by a community led masterplan.

The values statement for Lake Dunstan and its margins:

Clean, family friendly, tracks, trails, the accessible nature of the lake and its' ability to support mental wellbeing are the things that are most highly valued by the community.

Key Recommendations

1. Develop a 'whole of lake' community led masterplan.

WHAT? More than just a landscape plan:- a marked-up map of the lake and its margins depicting infrastructure, trails, zones, habitats, landscaping etc.

WHY? To clearly identify what will happen where around the lake and provide a clear picture of the supported long-term outcome for the lake.

2. Establish an effective working collaboration of stakeholders (or a new entity) – placeholder name “the Lake Dunstan Management Authority (LDMA)” - with responsibility to implement the masterplan.

WHAT? An 'entity' formed with appointees from key stakeholders, with the purpose of implementing the masterplan over time. The entity has a funding stream to support its existence.

WHY? The status quo does not provide ownership of the issues and the historic lack of plans, policies, and motivation to act is evidence of this. The community priorities need a coordinated multiagency approach to be delivered and resources can be combined to greater effect.

3. Produce an independent, science-based visualisation of the appearance of the Kawarau Arm 20 years from now.

WHAT? A report compiled using latest survey and modelling techniques to provide the community with a realistic description of the physical state of the Kawarau Arm 20 years from now.

WHY? This part of the lake is changing very rapidly and the absence of information about the changes expected to occur here over the medium term make it very difficult to create a strategy for the arm on which to base actions in the near term.

4. Establish a Task Force of stakeholders to agree how the Kawarau Arm can best be managed to meet community aspirations in the long term.

WHAT? A group of interested stakeholders from across the community who consider the issues, science and community aspirations around the Kawarau Arm and agree what long term success looks like for this area of the lake and recommend the first actions towards achieving it.

WHY? The transition, by silting, of the Kawarau Arm is a significant issue but has not been drilled down into at this stage because there is not sufficient information to do so. The output from recommendation 3 above is needed before this work can be meaningfully progressed.

5. As a precursor to Recommendation 2, CODC, LINZ and the ORC review their policies and procedures to identify what their role may be in delivering the masterplan as part of the 'LDMA' collaboration.

WHAT? Each of the current decision-making organisations that have the ability to impact on what happens on or around the lake should review Fig 1 above and summarise their role, remit, plans of work and policies relating to the elements depicted.

WHY? To enable a picture to be produced identifying which decision makers are responsible for what, a summary of relevant policies and priorities and to identify gaps in ownership or policy or mismatches with community priorities exist.

2. Introduction

The Lake Dunstan Charitable trust was established in 2015 and is regarded by the community and local elected representatives as the “Guardians of Lake Dunstan”

The objectives of the Trust are:-

- To work with the wider Cromwell community and relevant organisations to enhance and protect Lake Dunstan and its catchments.
- To raise awareness about the importance of maintaining and improving the water quality and health of the lake and other waterways.
- To encourage the development of a management plan and monitoring framework for Lake Dunstan.
- To work with the community and relevant agencies to support measurement and monitoring of water quality.
- To seek funding and assistance to support the Trusts activities.

In 2020, the Trust received funding, through LINZ, for a project under central governments Jobs for Nature programme.

The project included elements to produce a community engagement plan, develop a vision around the potential future for the lake and identifying the best technology/platform would be best to collate and capture community views.

The Trust identified that in developing a long-term community vision for the lake, it was important that the work was led by an independent organisation. The Trust met with SoF board members and attended a visioning workshop that SoF held in Hawea to observe SoF in action.

In mid-November 2021 SoF presented a costed proposal to the Trust to undertake community engagement to establish a long-term community supported vision for Lake Dunstan and its margins. The Trust accepted the proposal and SoF commenced work on the project in late December 2021.

Shaping our Future acknowledge the support provided by the LDCT – in particular Megan Phillips - and the willingness of the Dunstan community to engage with this process, without which it would not have been possible to produce this report.

3. Who are Shaping our Future?

Shaping our Future is a not-for-profit incorporated society based in the Queenstown Lakes District with volunteer board members living across the Queenstown / Wanaka area. It was formed in 2011 to ensure the community gets a chance to guide today's decision-makers into the future we collectively envision. Funding - derived from local and central government sources – is used to engage contracted executive support to run the organisation and enable engagement, workshops, recommending reports and submissions on behalf of the community to be undertaken/produced.

We believe enabling and empowering community self-determination is the most valuable thing we can do for our communities. The by-line “describe your vision, determine your future” is an incredibly positive aspirational statement. In an age where many feel overwhelmed, bringing a focus back to the things we can control, consider and affect is incredibly healing.

The independence of Shaping our Future is greatly valued by the communities that we work with. Engagement is more open and constructive if there are no perceived pre-determined outcomes. Because the output from our processes is led by the community and is for the community, it has longevity and continued relevance – unlike other plans that are produced and forgotten about.

See www.shapingourfuture.org.nz

4. The Engagement Process

The proposal from SoF was to primarily undertake face to face engagement in the form of workshops, person to person surveys and creation of a task force group to prioritise outcomes and recommendations. This work was to commence after the Christmas / New year summer break.

On 26th Jan 2022 face to face survey work was undertaken at the Lowburn camping area in order to capture the views of holiday making visitors to the area.

However, the end of January saw the Omicron outbreak, a nationwide move to the Red traffic light alert. This meant the engagement plan needed to change as it became clear that face to face engagement would either not be permitted or that the public would have little appetite to do so.

Accordingly, the focus moved to online engagement. The face-to-face survey was loaded into Survey Monkey and publicised via social media and community groups. In total the responses of 246 survey participants were recorded.

In conjunction with the survey, an online workshop was devised, intended to capture the key outputs that a face-to-face workshop would have produced. However, the online events were designed to last no more than 90 minutes.

Three workshops were scheduled and published as online events. Attendance was much lower than would have been expected and mirrored what we found in our work with other community workstreams, that people much prefer face to face engagement. 13 individuals participated and whilst the numbers were low, this presented the opportunity for greater depth of conversation around the issues.

After a drop in the alert level, the opportunity was taken to undertake school & college visits to capture the youth voice. On 15th March 2022 visits were made to Goldfields Primary, Cromwell Primary and Cromwell College and around 90 students participated in a one-hour process.

It had been anticipated at the project proposal stage that after the in-person workshops had been held, a group would be drawn together from the attendees to process the output and produce prioritised recommendations.

However, given the ongoing restrictions and public concerns about meeting, it was decided that SoF would review all of the content produced by the engagement to date along with that from previous survey work undertaken by the Trust (which combined represented input from over 600 people), collate and summarise the information into themed priorities, values and descriptions of long term success which would be prioritised by use of a specialist online engagement platform – Ethelo.

The Ethelo platform uses voting-based prioritisation to assist identification of a set outcomes that are supported by the most people and thus provide direction in a situation where everything is supported by a range of people but there aren't the resources to do everything.

The platform was live 4 weeks, closing out 7th June 2022 and 268 people participated and over 600 comments were recorded

The format, content and key themes that emerged from all of the above processes are detailed further on in this report and detailed outputs are attached as appendices.

Finally, the findings of the engagement together with the draft vision, values statement and key recommendations were presented at a public workshop held on 19 July 2022 and attended by around 60 people to ensure they were valid.

This report and its recommendations now passes to the LDCT for custodianship and implementation.

5. Background Information and Documents

To aid the production of the key issues to be tested via Ethelo, the 'messages' expressed in relevant documents were also considered. The documents considered were:-

1. The Cromwell Community Plan (undated but circa 2019)
2. The Cromwell Community Spatial Plan Stage 1 May 2019
3. Summary of LDCT Biannual survey July/Aug 2021

The documents are attached as appendices to this report as they form useful context and background to the key themes that the public were asked to prioritise.

6. The In-person/ Online Survey

SoF typifies its engagement as blank canvas and blue-sky thinking and the questions put to respondents were aimed to preclude any pre-determined position or views being presented.

The questions were:-

Q1 What ONE word describes the biggest challenge Lake Dunstan is currently facing?

Q2 What ONE word describes "success" for Lake Dunstan in the future? (think 30+years!).

Q3 What are the three things or aspects that you value most about the Lake Dunstan area/community

Q4 What are the three "things" that don't currently exist that you would like to see in the Lake Dunstan area in the future? These could be physical, environmental, community, amenity etc

Q5 Is there anything else that you'd like to add in the context of working towards a successful future for Lake Dunstan, its surroundings, and its community?

Q6 Your relationship to the Lake Dunstan area (check box list of options)

Q7 Your age (checkbox list of options)

Inevitably, despite being asked for one word or brief answers, some respondents covered multiple issues any many used different words to describe essentially the same topic.

To produce meaningful word cloud summaries of the answers to Q1-4 the similarly themed words were collated. In the interests of transparency, the detail of all the responses to Q1-5 are attached at Appendix 4.

The survey had 264 respondents.

80% of survey respondents lived in the area with the balance being holidaymakers and day visitors.

There was good representation of youth and 40 plus age groups, but as is commonly found in public engagement, the 18–30-year-olds are underrepresented.

Collated results word cloud Q1: biggest issue



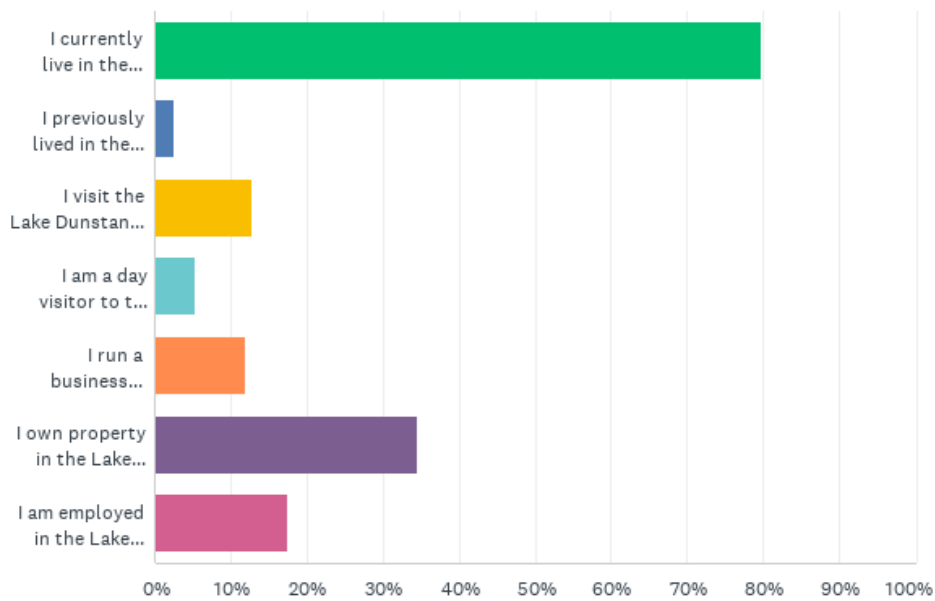
Collated results word cloud Q2: long term success



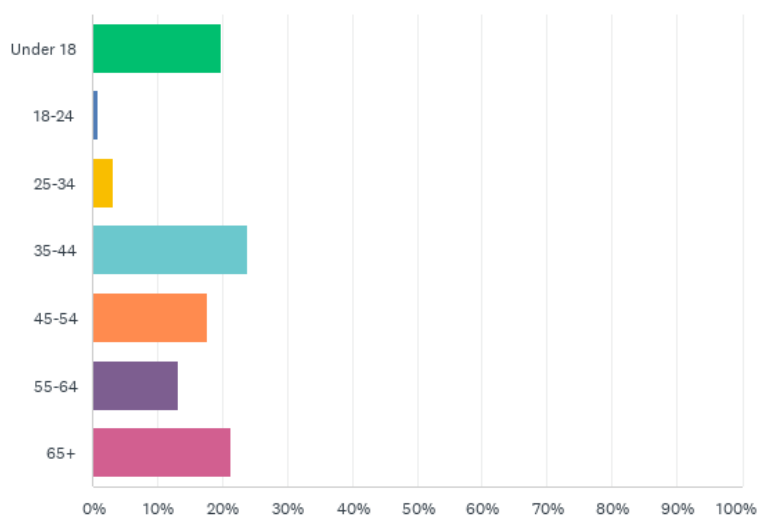
Survey Q5 – anything else to add

Respondents expanded on their previous answers and their verbatim comments are attached to this report at APPENDIX 4. The comments helped shape the topics that fed into the Ethelo platform.

Survey Q6 – Your relationship to Lake Dunstan area



Survey Q7 – age of respondents



7. The online Workshops

A series of 3 in-person community workshops were scheduled to be held over February and March 2022 but the outbreak of Covid locally led to these moving online using the Zoom platform. Accordingly, their timescale was reduced to 1 ½ hours each. The first zoom session was abandoned because attendees left the meeting but the second and third were completed. Attendance was less than expected, but this provided opportunity for some in depth discussions.

Core to the workshop was the concept of “the Lake Dunstan Ecosystem” which set out what was in or out of scope of the discussions.

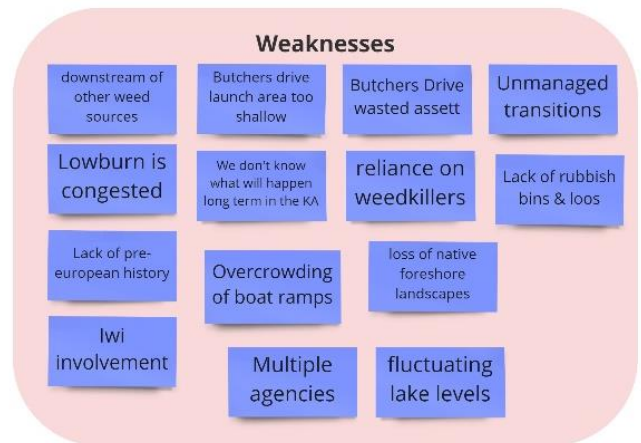
The workshop presentation is attached as an annex to this document. This section of the report presents the summarised output of workshop attendees

Activity – One-word issues: participants were asked to provide one word that was the biggest issue facing the Lake Dunstan ecosystem today and one word that meant long term success.

The words that were provided were:

One-word biggest issue	One-word long term success
Mismanagement	Cherished
Weed	Inspiring
Responsibility	Connection
Ownership	Collaboration
Work	Visibility
Development	Community focus
Unfinished	Boating
Infrastructure	Accessibility

Activity - SWOT analysis. Participants broke into groups to discuss Strengths, Weaknesses, Opportunities and Threats to the Lake Dunstan Ecosystem. These were captured with virtual sticky notes as below:



The Lake Dunstan Ecosystem



Activity: Headlines from the future. Participants were asked to create some newspaper headlines for 30 years' time that meant "we did it" ie describing a long term future success.

We did it! : what does success look like?

Solar power heated section of the lake voted best swimming spot in NZ
Man made lake perfect for all kinds
Grebes saved from extinction thanks to thriving Cromwell wetland
Nature and tourism thriving side by side at Lake Dunstan
Lake Dunstan - the poor cousin that now ticks all the boxes
Lake Dunstan shoreline lizard haven of Otago
Tuna/Eels make their own way home
Contact Energy voted most community friendly company by residents
Last rabbit killed
ORC empty bank balance on Lake Dunstan

Activity: What do we value most? Participants were asked to describe things, tangible or otherwise that they valued about the Lake Dunstan ecosystem.

What do we value most?



8. The School Visits

On 15th March 2022 visits were made Goldfields Primary, Cromwell Primary and Cromwell College to capture the youth voice. Each visit was an hour in duration and in total around 90 students participated.

After a simple explanation around the purpose of the visit, 3 simple exercises were undertaken.

Firstly, students were provided with A3 maps of the lake and asked to mark their favourite places to visit. The purpose here was to prompt thinking that linked the lake with its surrounds and how these are used. These are recorded below:-

The Junction for fishing	The middle of the lake for boating	McNulty Inlet for fishing & swimming	Cornish wharf
Lowburn Bridge for jumping off	Concrete Wharf by Cromwell bridge for jumping and swimming	Swimming at Lowburn harbour because it is sheltered	Jumping off rocks, shallow areas, and pontoon by at Bannockburn inlet
Making tree huts by the Colliers Club	By the river at Bendigo	At the waterpark	Parkburn swimming up past Pisa Moorings
McNulty Inlet because its open, parking, families, eels	Paradise – a bbq spot for teens	Shady trees at Pisa Moorings	



The second exercise for the students was to verbalise the ‘best’ and ‘worst’ aspects of the lake and its surrounds. The results provide a list of treasures to be protected, enhanced, or replicated and a list of opportunities for improvement. The comments captured are below.

BEST THINGS

Fishing and watching fish	Rocky areas – no weed or silt
Jumping in	Trees
The waterpark	It’s free
Not too cold	Jumping off cliffs
Diving in	Varying depths
Safe for swimming	BBQs
Temperature	Great for boating
Places for gathering	Deep water swimming
Kayaking, boating and paddleboarding	Tidy people
Water-skiing, donutting	Splashing your family
Bridge jumping	Snorkelling, scuba
Jet skiing	Wakeboarding

WORST THINGS

Landlocked eels	Dog poo
Lake weed	Duck itch
Broken glass	Driftwood
Dirty pontoons	Scary eels
Crowds, too busy	Non-native trees
Slimy rocks	Prickly bushes
Silt	Butchers Drive
Trash around and in lake	Murky water
No rubbish bins	Alfred St pontoon too shallow
Driftwood tangled in overhanging trees	The waterpark
Currents and whirlpools	No pontoon at Pisa



The final exercise for the students was designed to explore what could be done to improve things over a long period. The students were asked to imagine that there was a competition to find the best lake in the whole of New Zealand – but that the judging wasn’t going to happen for another 20 years. So, what could be done to ensure that Lake Dunstan was the best lake in NZ in 20 years’ time?

The suggestions made are as below: -

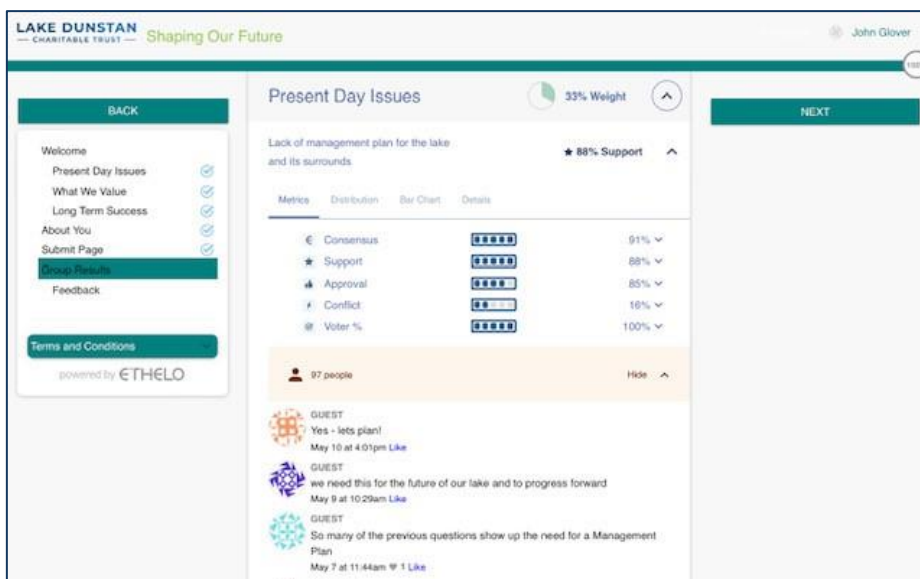
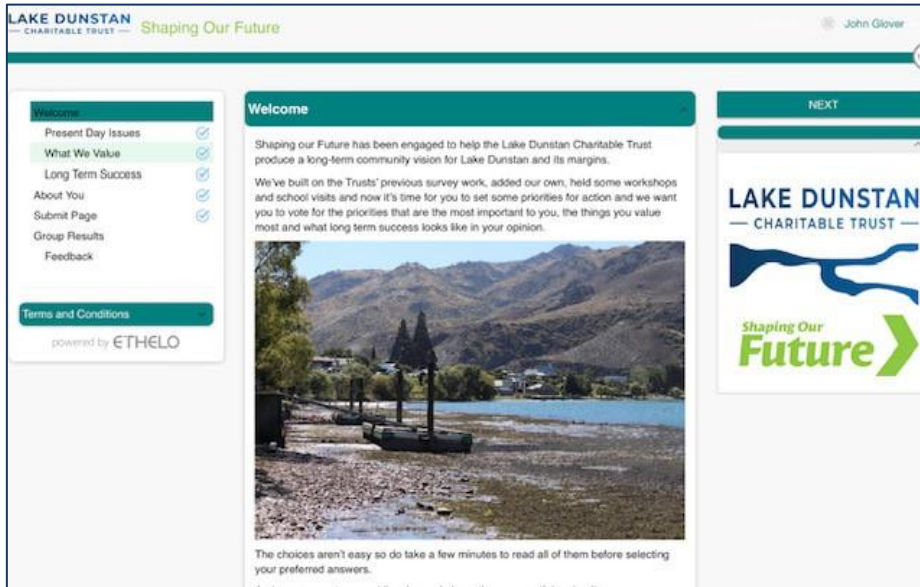
Diving boards	A lake weed eating machine	A shallow swimming area	A warm water hydroslide
A lake trash removal robot	A treasure hunt around the lake	More pontoons	Swings into the lake
Seats in the lake to watch the sunset from	A yearly waterfront party	A fish park with underwater aquarium	A fundraiser to clean up the lake
Trees in the water – The Cromwell Tree	Lakeside massage chairs	A bunny petting area	Bird feeding stations
Remove bushes and weeds from the lake edges	Clear areas for sitting and tying up boats	Rubbish bins and a trash pick-up service	Use less water to keep the lake level stable
Bigger pontoons	Islands that you can swim to	Clean pontoons	Snack bars, food trucks, a diary
The best rope swing ever	Volunteers clean up and planting groups	Golden sandy beach areas	A waterfall
More trees and plants	A huge waterpark	Freshwater dolphins	Hidden secret places for swimming and diving in
An underwater observatory	Zero rubbish	Eel passes	Clear clean weed free water



9. Setting the Priorities – Use of the Ethelo Online Platform

Ethelo is an online group decision-making platform that enables communities to solve complex problems and build consensus. It is used to identify top priorities in a scenario where not all priorities can be advanced due to resource constraints.

It presents options; participants indicate their level of support / opposition to the options and the platform then indicates which group of priorities has the support of the greatest number of people.



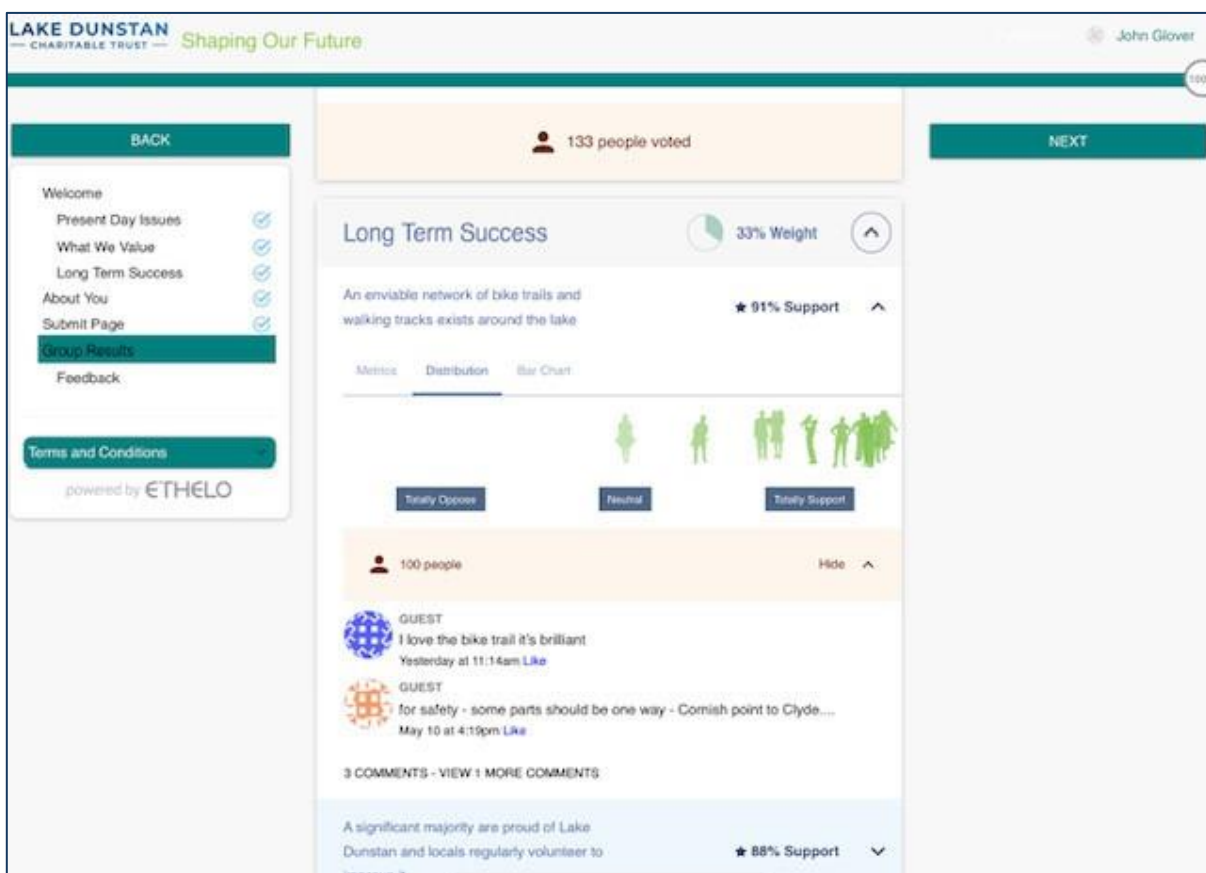
After reviewing the output from our online survey, the school visits, the online workshops and the summary of the LDCT biennial survey, we defined 15 priority issues, 15 descriptions of long-term success and 15 values statements. All of these were largely supported but we wished to determine a group that was the most supported by the most people to help set priorities.

The wording of the topics that respondents voted on is below.

In retrospect, some found the terminology of the exercise ambiguous. Given that all the issues, values and outcomes presented had a fair degree of merit it would have been better if participants had been asked to indicate how important (from most important of the options presented to least important of the options presented) they felt it was to act on the issue, achieve the outcome and support the values described instead of being asked to what extent they supported or opposed them.

In recognition of this, the wording of what participants were being asked to do (but not on the subjects themselves) was amended mid-way through the survey period to make this clearer. Nonetheless, there was a good take up of participants and we think this is partly because what we are seeing is that engagement that can be undertaken at a time that works for the participant is more attractive than a time specific option.

A novel feature of the platform is that participants are able to comment on the topics they are prioritising and reply to the comments of others. Over 600 comments were captured.



The questions put to the vote on the Ethelo platform were:-

Q1. Present day issues - 15 Present-day issues listed below have been identified as priorities for action. How important are these issues to you?

- 1 The impact of lake weed
- 2 The effects and impact associated with the Kawarau arm silting up
- 3 Inappropriate commercial activity by or on the lake
- 4 Better managed camping areas with better facilities
- 5 The need for better rabbit and weed management
- 6 The lack of a marina and the need for more boat ramps
- 7 Restoring landscapes with native plants
- 8 Noise from boats
- 9 More and better curated picnic areas, shade trees
- 10 The lack of fish ladders to allow species to bypass dams
- 11 Lake margins are unkempt, weeds, rubbish
- 12 The lack of a management plan for the whole of the lake and it's surrounds
13. Cleanliness of existing facilities, pontoons etc
14. Provision of more pontoons for swimming to, jumping off
15. Lack of lake edge café/bar/restaurants

Q2. What we value – please indicate how important each value is based on the degree to which they resonate with you and how you feel about Lake Dunstan and its surrounds.

- 1 I value spending time at the lake because it improves my mental wellbeing
- 2 I value spending time at the lake because it improves my physical health
- 3 I value areas of tranquillity at the lake.
- 4 I value using the lake for motorised activities
- 5 I value using the lake for passive activities
- 6 I value the ability to freedom camp by the lake
- 7 I value native plants and species around the lake
- 8 I value the commercial opportunities that the lake can hold
- 9 I value the community that revolves around the lake
- 10 I value the open views of the landscape that the lake provides
- 11 I value an un-commercialised lake
- 12 I value the usable and accessible nature of the lake
- 13 I value the clean water in the lake
- 14 I value trails, tracks, picnic and parking areas by the lake
- 15 I value the family-friendly opportunities the lake provides

Q3. Describing long term success – please indicate how important each of the following descriptions of long-term success is to you.

1. Commercial development on or around the lake is controlled by community led planning policies.
- 2 A comprehensive plan for land-based weed and rabbit control, planting natives and biodiversity improvements has been implemented
- 3 Lake weed is managed to the satisfaction of Lake Dunstan stakeholders and is harvested as a sustainable resource
- 4 An enviable network of bike trails and walking tracks exists around the lake
- 5 The lake supports low impact, high value employment opportunities
- 6 A plan has been agreed with the community and implemented to reduce the impact of silt, weed and driftwood in the Kawarau arm to an acceptable level
- 7 The freedom or paid camping areas around the lake are highly valued by both their users and the local community

- 8 A significant majority are proud of Lake Dunstan and locals regularly volunteer to improve it
- 9 The best spots for swimming have been kept for swimmers and enhanced with great shore-based facilities
- 10 The lake and its margins are renowned for its cleanliness
- 11 Native plant, bird and aquatic species are thriving in and around the lake
- 12 Contact Energy, Linz, Central Otago District Council and the Otago Regional Council all embraced the community vision and helped deliver it.
- 13. A lead organisation was established and was responsible for implementing the community led master plan and policies for the lake
- 14. The area between Old Cromwell and Butchers drive has been re-purposed to provide a valued and vibrant area
- 15. A marina with associated cafes, bars and water sports equipment rental has been built

A report of the comments made via Ethelo is attached as Appendix 3.

Participation

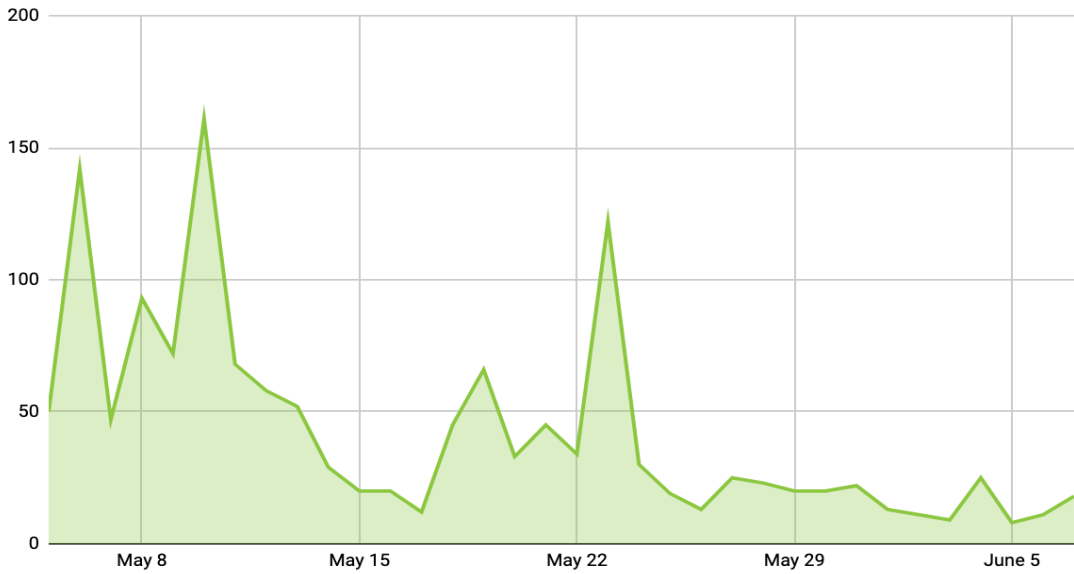
Over the 5 weeks that the engagement was live, the online platform garnered:

- 1498 visitors
- 270 participants
 - 220 (81%) platform completions (at least 25% completed)
 - 190 (86%) platform completions (at least 50% completed)
 - 113 (59%) platform completions (at least 75% completed)
- 716 comments
- 803 comment likes

Data Validation:

5 internal participants were removed, 3 Ethelo staff and two project admins.

There were a high number of shared IPs, as a result of this and a correlation that was found between these participants and a pattern of comments, 24 participants were removed from the site.

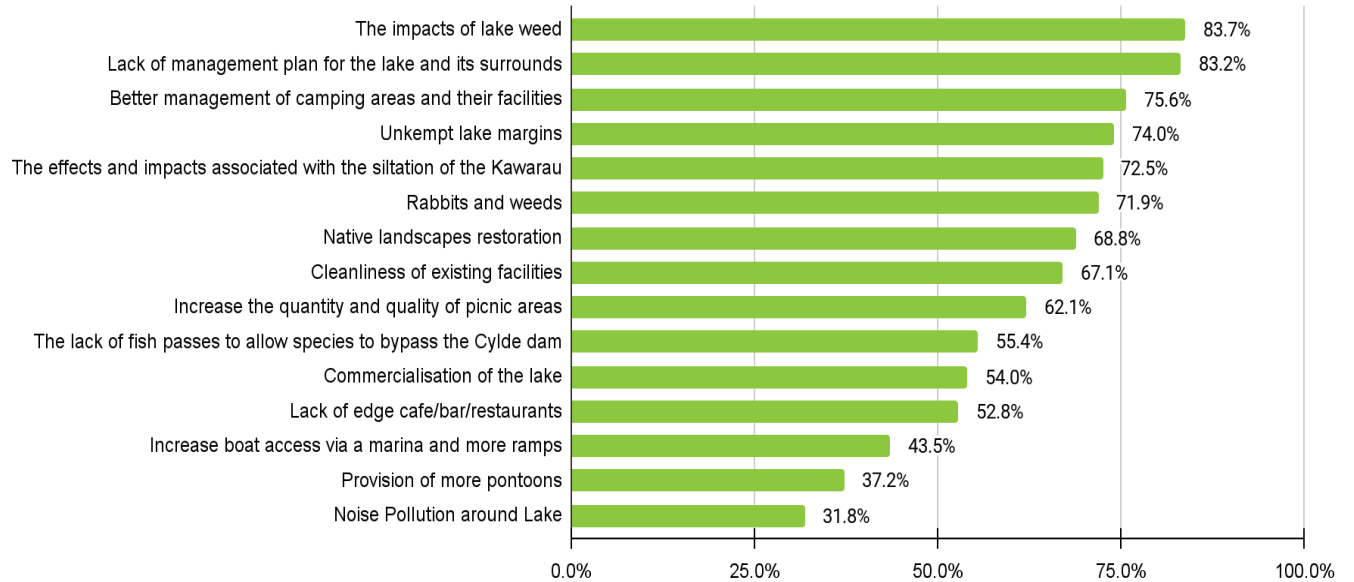


Platform visitors between May 5 and June 7, 2022.

1. Present Day Issues

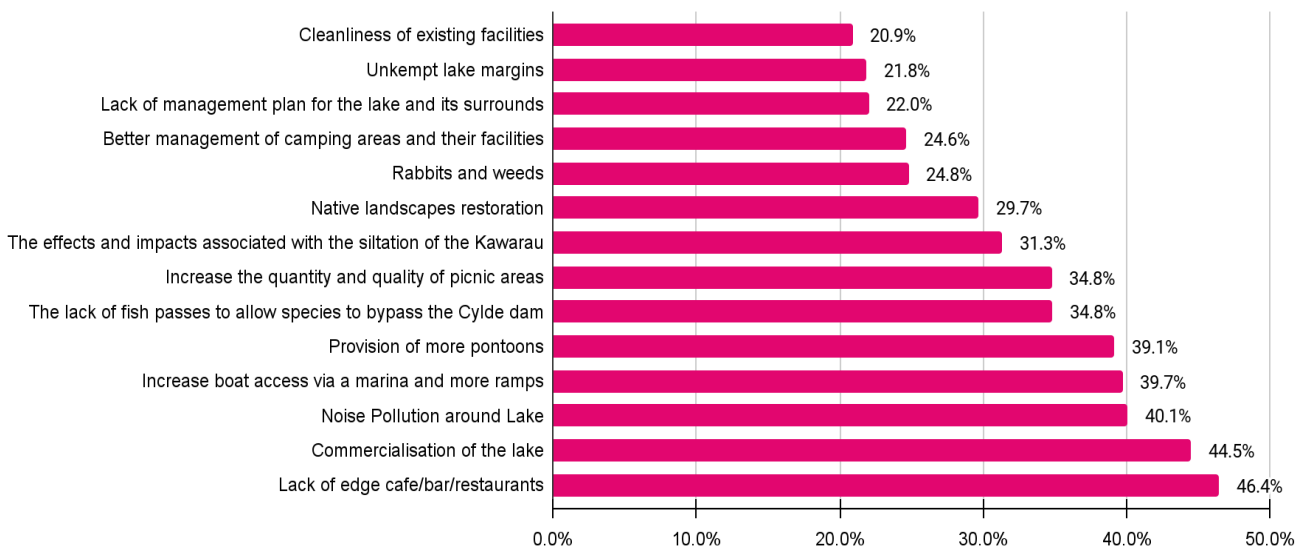
Summary

The following chart shows all options, from highest to lowest approval. In this case, “Approval” means any score that is more than “Neutral”, and in the 5-point scale, we used, “Moderately Important” is the neutral score. Therefore, the graph below displays the percentage of participants that voted higher than “Moderately Important” per option.



The following chart shows all options from lowest to highest conflict. In this case, “Conflict” means the greatest level of polarization. Low levels are good and high levels are bad. Polarization is measured by looking at the levels of support and opposition for an option.

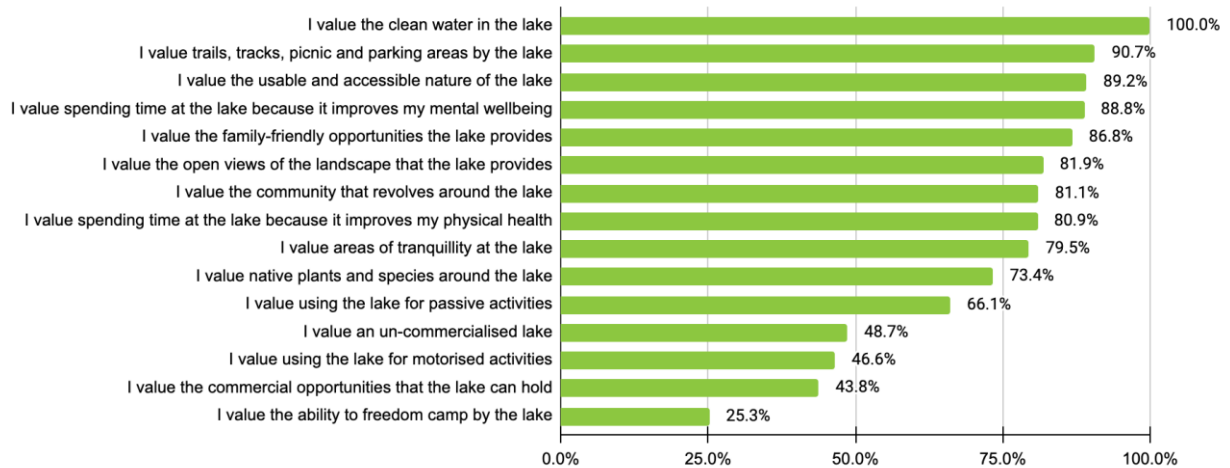
For example, if 100 people vote on an option and 50 “highly support” while the other 50 “highly oppose”, we say that this group is 100% polarized since the group’s aggregate support level is perfectly split in half.



2. What We Value

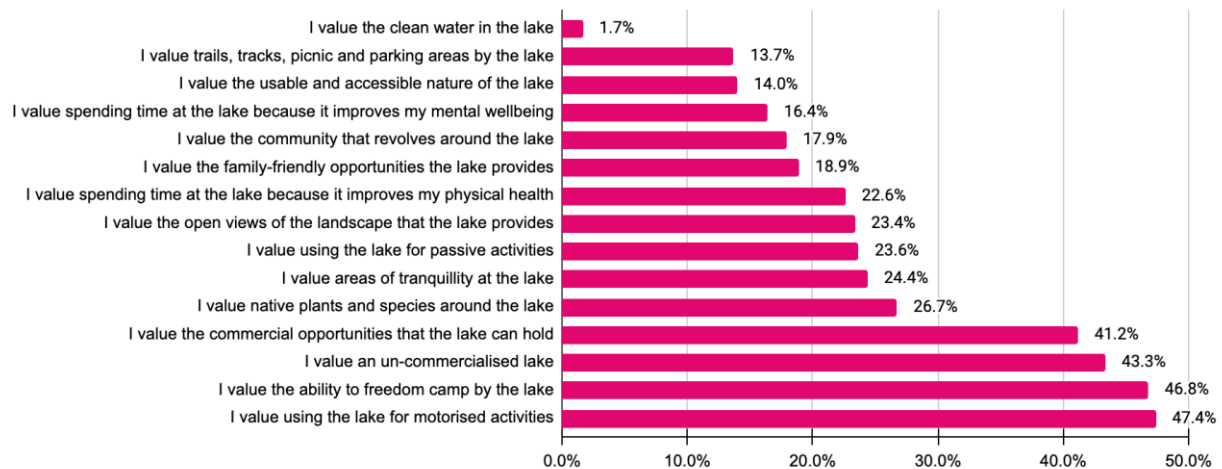
Summary

The following chart shows all options, from highest to lowest approval. In this case, “Approval” means any score that is more than “Neutral”, and in the 5-point scale, we used, “Moderately Important” is the neutral score. Therefore, the graph below displays the percentage of participants that voted higher than “Moderately Important” per option.



The following chart shows all options from lowest to highest conflict. In this case, “Conflict” means the greatest level of polarization. Low levels are good and high levels are bad. Polarization is measured by looking at the levels of support and opposition for an option.

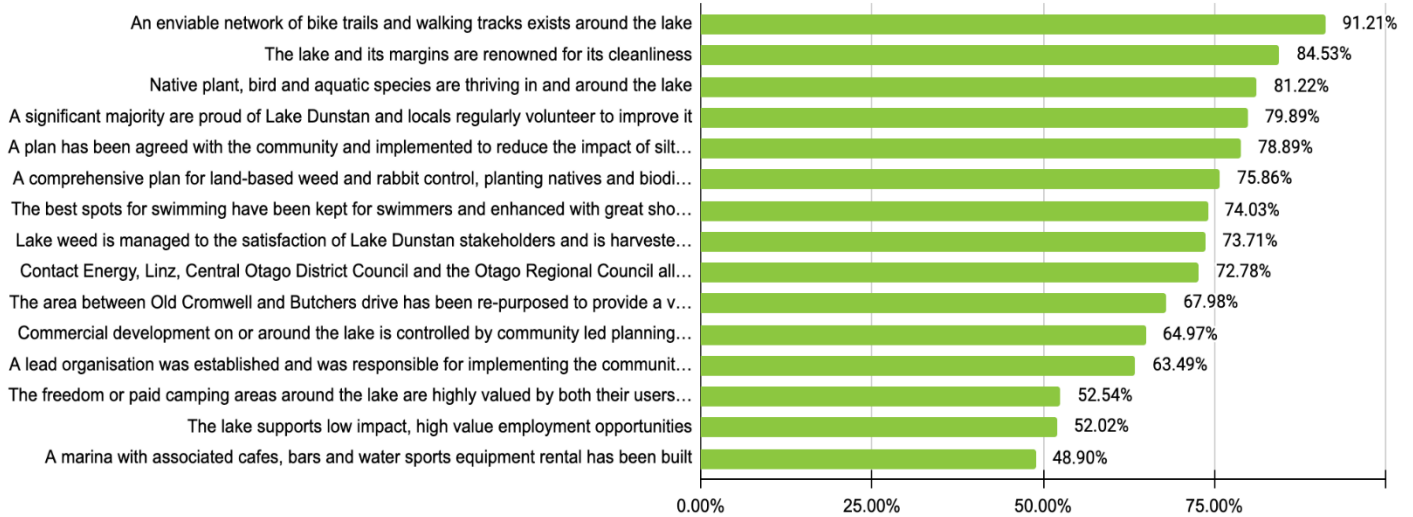
For example, if 100 people vote on an option and 50 “highly support” while the other 50 “highly oppose”, we say that this group is 100% polarized since the group’s aggregate support level is perfectly split in half.



3. Long-Term Success

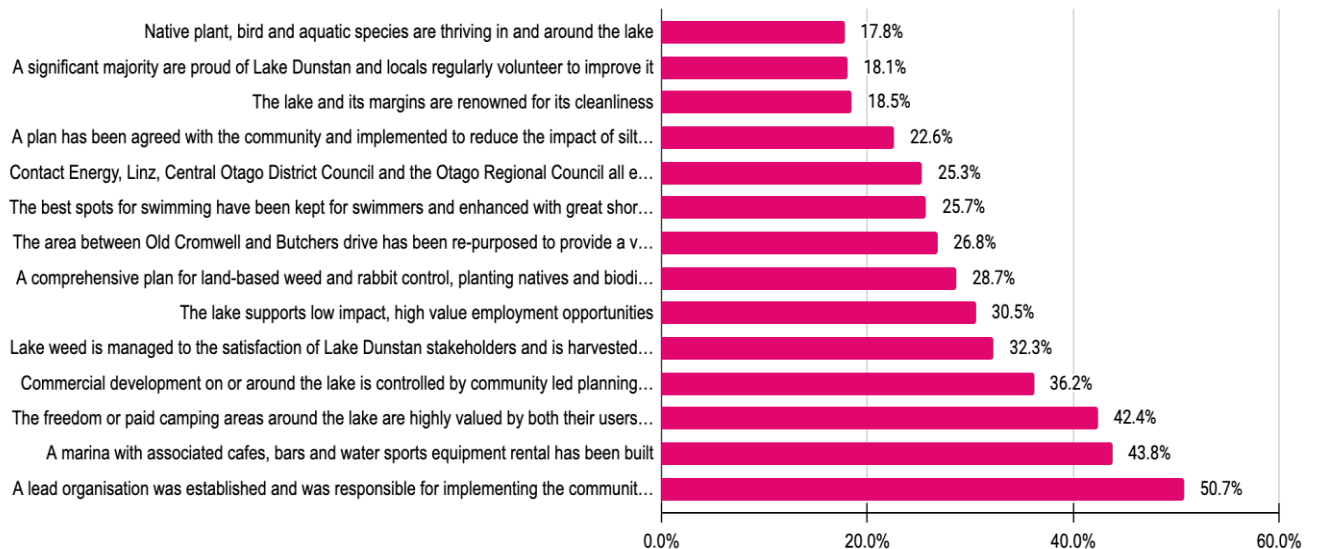
Summary

The following chart shows all options, from highest to lowest approval. In this case, “Approval” means any score that is more than “Neutral”, and in the 5-point scale, we used, “Moderately Important” is the neutral score. Therefore, the graph below displays the percentage of participants that voted higher than “Moderately Important” per option.



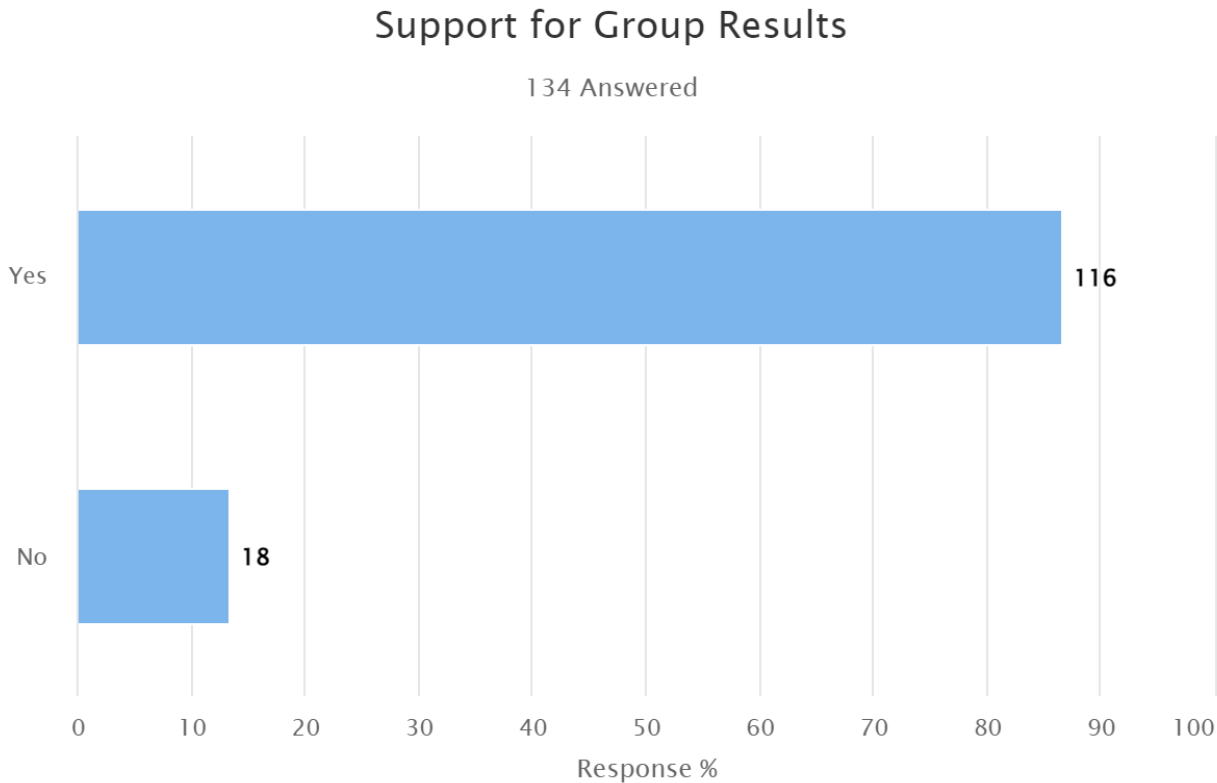
The following chart shows all options from lowest to highest conflict. In this case, “Conflict” means the greatest level of polarization. Low levels are good and high levels are bad. Polarization is measured by looking at the levels of support and opposition for an option.

For example, if 100 people vote on an option and 50 “highly support” while the other 50 “highly oppose”, we say that this group is 100% polarized since the group’s aggregate support level is perfectly split in half.



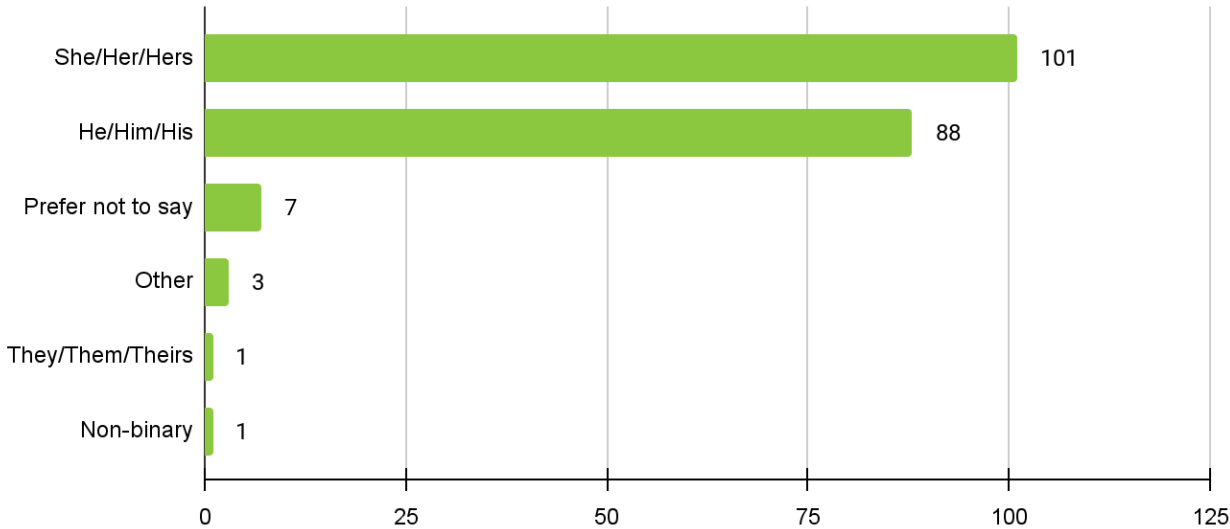
Support for Group Results

Would you support the collective outcome that is described on the group results page?

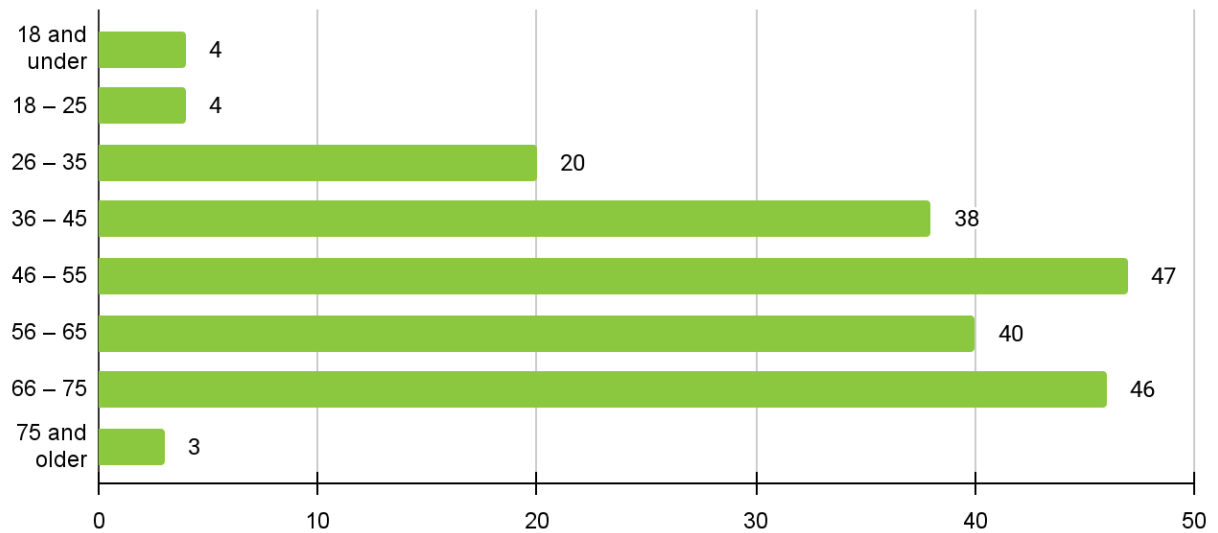


4. About You

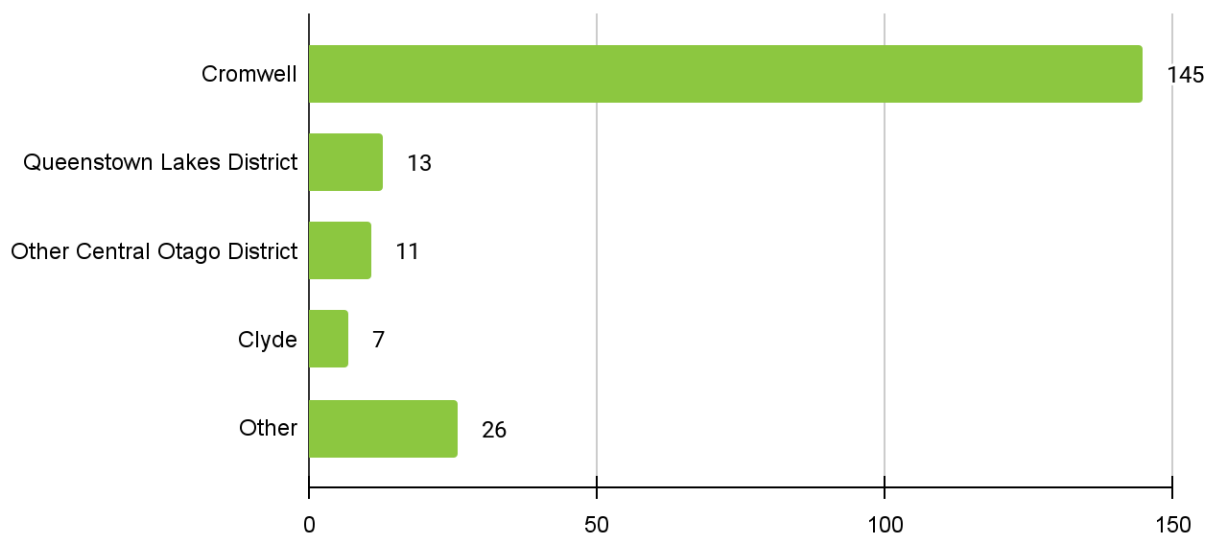
4.1 What is your gender pronoun?



4.2. What is your age?



4.3. Where do you live?



Discussion

The charts above indicate that out of the 45 topics that participants were asked to vote on, there were only 6 that less than 50% of respondents considered were at least moderately important. This is a good indication that the issues presented were relevant to the community.

The polarising issues are commercialisation, freedom camping, motorised activity on the lake and the suggested creation of a new organisation to manage the lake.

10. Summary of Findings

The community have engaged to a high degree and have been able to clearly verbalise what they see as the current issues, what they value but also what they would like to see in the future. This in itself provides material for the current work of any decision makers involved in the lake and its margins.

As a man-made, young and changing lake, there is a lot of concern around the big issues of siltation and lake weed and the lack of a management plan for the lake and its surrounds. Somebody taking control of a range of aspects was the biggest thing that survey respondents wanted to see in the future.

The lack of independent and public information to allow the community future-cast the consequences of siltation in the Kawarau Arm is a significant barrier to identifying what a long-term success looks like for this part of the lake. A science led depiction of that area 20 years from now is needed to inform further work on what decisions should be made in the short term

Most of the things that the community aspire to are, in the scheme of things, low cost, low impact and will represent a much-valued return on investment. Shade trees, swimming areas, pontoons, picnic spots, tracks and trails, bins and weed control. Importantly they benefit both the local and visiting populations and are compatible with work to increase biodiversity and maintain a clean lake, which is the aspect that is most highly valued by the community.

The recreational opportunities that do and could exist around the lake also provide many low carbon forms of interaction and could reduce carbon even further by building on the lakes history of being a holiday destination on the doorstep.

It is clear most of the participants are supportive of the same set of outcomes, albeit to slightly greater or lesser extent, with the exception of commercialisation of the lake where the Ethelo platform revealed a somewhat polarised set of comments mostly centred around a newly established water park business, freedom camping, motorised activities on the lake and the creation of a new organisation to manage the lake.

The polarising issues are emotive but very much current day issues, and this report is not concerned with the merits or otherwise of them, but some issues are a good illustration of how some feel there is a disconnect between the policies and processes of decision makers and any community led mandate. This suggests that the policies need review to make them fit for the future as growth in the area occurs.

It also indicates a very unclear understanding of the fragmented, and possibly uncoordinated roles of the various parties involved that result in a decision.

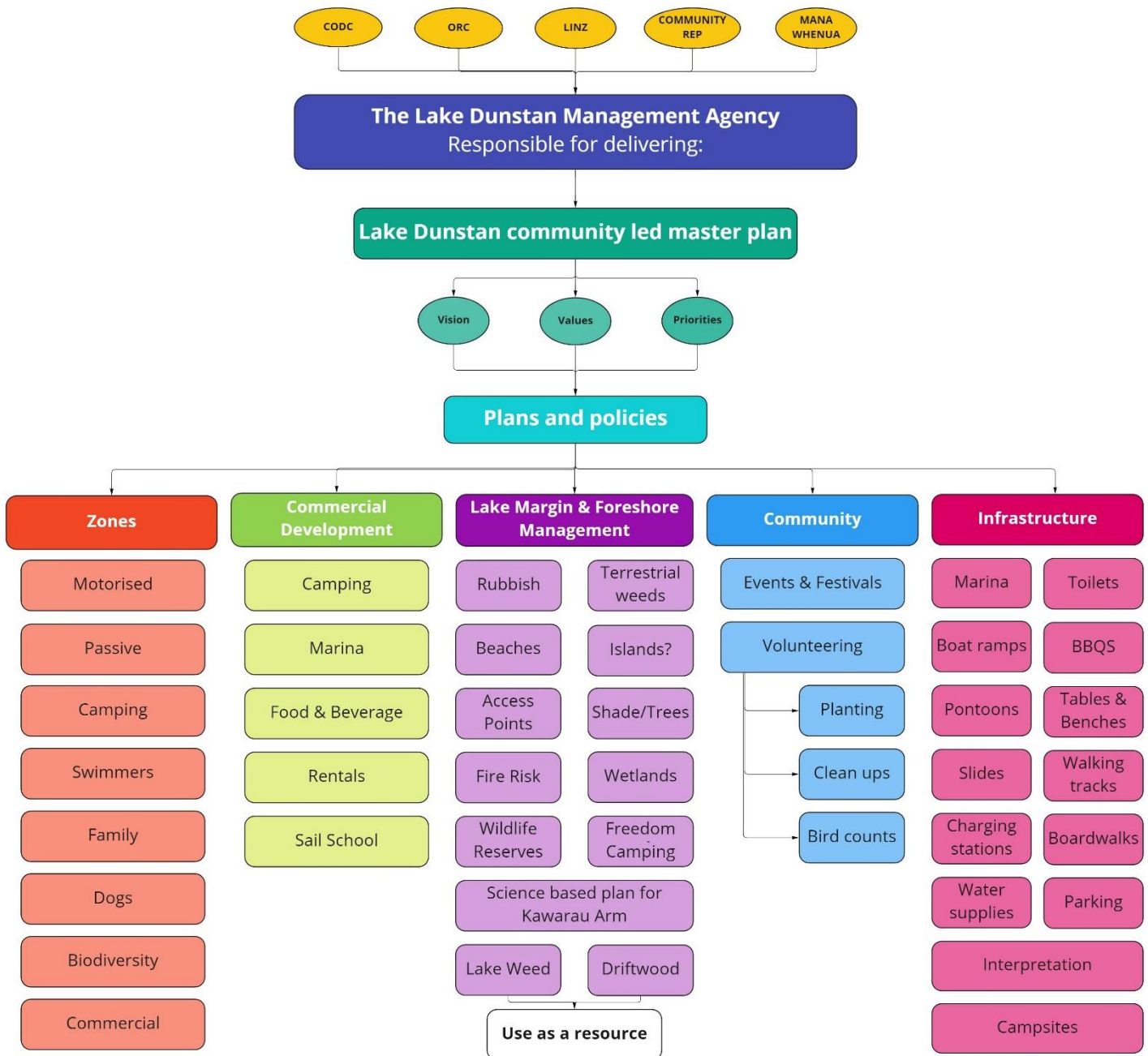
It is fair to say that often it is the process by which a decision is made that people feel strongly about, rather than the actual decision itself.

The fragmented and apparently uncoordinated regime also makes it very hard to see where responsibility falls for action to protect, preserve, maintain, or improve the matters raised by the community in this engagement. It would be a reasonable assumption to make that if a single 'entity' had responsibility for managing the lake, it would be more effective, efficient, and accountable. How that entity might be formed is simply a question of governance, but the purpose is already established.

And using the same logic, it makes sense to capture and then depict, in a single, easily readable, and understandable form, how, in physical terms, the community aspirations would be implemented around the lake and its margins. Basically, a community led masterplan.

The structural model shown below depicts the key stakeholders that would sit in an entity. It shows its purposes, the role of the community led masterplan and then below that all the topics that the community have highlighted as being important during this engagement and that need outcomes set and day to day management to achieve.

This report therefore recommends that a proactive, directed and coordinated whole of lake approach needs to be adopted rather than the piecemeal, reactive situation that occurs currently as that would be the most effective means of delivering community aspirations and managing competing demands on the resource that is the lake and its margins.



11. Recommendations

1. Develop a 'whole of lake' community led masterplan.

WHAT? More than just a landscape plan:- a marked-up map of the lake and its margins depicting infrastructure, trails, zones, habitats, landscaping etc.

WHY? To clearly identify what will happen where around the lake and provide a clear picture of the supported long-term outcome for the lake.

It is suggested that the Trust uses their extensive working knowledge to draw up a draft all of lake masterplan that accommodates the different priorities and aspirations that emerged in this engagement. The key access points, tracks and trails are all known as are the existing patterns of usage. The masterplan should indicate what activities would best accommodated where, what infrastructure is required, the differing nature of separate parts of the lake.

The draft will need a number of iterations as it is consulted on – the key with the plan is that it is not limited by current day thinking or constraints and it needs to paint a picture that is many years hence in order to give time to achieve it.

2. Establish an effective working collaboration of stakeholders (or a new entity) – placeholder name “the Lake Dunstan Management Authority (LDMA)” - with responsibility to implement the masterplan.

WHAT? An 'entity' formed with appointees from key stakeholders, with the purpose of implementing the masterplan over time. The entity has a funding stream to support its existence.

WHY? The status quo does not provide ownership of the issues and the historic lack of plans, policies, and motivation to act is evidence of this. The community priorities need a coordinated multiagency approach to be delivered and resources can be combined to greater effect.

The LDMA could exist in a number of forms – this is a matter of governance that needs to be worked through. The public didn't place a high priority on the creation of a new organisation but equally they wanted things managed and controlled which implies the status quo is not meeting the needs of the community.

In the first instance, a workshop of decision makers would be worthwhile to explore opportunities and appetites.

3. Produce an independent, science-based visualisation of the appearance of the Kawarau Arm 20 years from now.

WHAT? A report compiled using latest survey and modelling techniques to provide the community with a realistic description of the physical state of the Kawarau Arm 20 years from now.

WHY? This part of the lake is changing very rapidly and the absence of information about the changes expected to occur here over the medium term make it very difficult to create a strategy for the arm on which to base actions in the near term.

The technical knowledge of what is happening in the KA is not readily available and most survey work is undertaken by Contact Energy with no interpretation or discussion to help picture the area in the future.

The Trust has been in contact with Professor James Brasington, Director of the Waterways Centre for Freshwater Management. James has indicated a willingness to review historical records, undertake some LIDAR work over the KA and potentially use the arm as a research topic.

It is important to drive this work forward because the knowledge it will provide is an essential precursor to understanding what opportunities and constraints will exist in the KA.

4. Establish a Task Force of stakeholders to agree how the Kawarau Arm can best be managed to meet community aspirations in the long term.

WHAT? A group of interested stakeholders from across the community who consider the issues, science and community aspirations around the Kawarau Arm and agree what long term success looks like for this area of the lake and recommend the first actions towards achieving it.

WHY? The transition, by silting, of the Kawarau Arm is a significant issue but has not been drilled down into at this stage because there is not sufficient information to do so. The output from recommendation 3 above is needed before this work can be meaningfully progressed.

Siltation in the KA was a topic that generated a wide range of comments across this engagement with some strongly held views as to what should or could or can't be done. Once the science is available, bringing a group of people together to work on the topic would be the best way to reach a conclusion that represents a community consensus.

5. As a precursor to Recommendation 2, CODC, LINZ and the ORC review their policies and procedures to identify what their role may be in delivering the masterplan as part of the 'LDMA' collaboration.

WHAT? Each of the current decision-making organisations that have the ability to impact on what happens on or around the lake should review Fig 1 above and summarise their role, remit, plans of work and policies relating to the elements depicted.

WHY? To enable a picture to be produced identifying which decision makers are responsible for what, a summary of relevant policies and priorities and to identify gaps in ownership or policy or mismatches with community priorities exist.

All organisations that make decisions that impact Lake Dunstan and its margins can and should be familiar with the content of this report, so that they can consider the public aspirations that have been captured as part of their decision making.

If each of the regulatory authorities verbalise their roles, policies, plans and processes relating to the lake, these can be collated and help provide a picture of the interdependencies and overlaps of the authorities in relation to management of the lake and its margins.

12. Feedback from presentation of findings to public workshops

The report was presented at a public meeting in Cromwell on 19 July 2022 that was attended by around 60 people. The meeting also covered the release of the Lake Dunstan Charitable Trust's Bridge to Bridge landscape plan and implementation plan for planting.

The public had no comments or observations to make in relation to the contents of this report.

APPENDICES

- APPENDICES.....35
- APPENDIX 1 – PRINTED VERSION OF THE ONLINE SURVEY36
- APPENDIX 2 – POWERPOINT PRESENTATION FOR THE ONLINE WORKSHOPS.....37
- APPENDIX 3 – ETHELO REPORT42
- APPENDIX 4 – SURVEY RESPONSES IN DETAIL68
- APPENDIX 5 – LDCT 2021 SURVEY SUMMARY94
- APPENDIX 6 – CROMWELL COMMUNITY PLAN94
- APPENDIX 7 – CROMWELL SPATIAL PLAN.....94

APPENDIX 1 – PRINTED VERSION OF THE ONLINE SURVEY



Welcome to the Lake Dunstan long term community visioning survey

Shaping our Future is an independent not for profit organisation that works to give the people of our community a voice in shaping the future of their district.

This survey explores what a successful long-term future for Lake Dunstan, its surrounds and its community might look like.

We will coordinate a group of local volunteers who will prepare a long-term vision, strategic objectives, and recommendations for Lake Dunstan.

Your input is valuable and confidential and will be considered by the group in preparing their final report. For more information visit www.shapingourfuture.org.nz

Q1 What ONE word describes the biggest challenge Lake Dunstan is currently facing?

Q2 What ONE word describes "success" for Lake Dunstan in the future? (think 30+years!).

Q3 What are the three things or aspects that you value most about the Lake Dunstan area/community

Q4 What are the three "things" that don't currently exist that you would like to see in the Lake Dunstan area in the future? These could be physical, environmental, community, amenity etc

Q5 Is there anything else that you'd like to add in the context of working towards a successful future for Lake Dunstan, its surroundings, and its community?

About you:

Age

I currently live in the Lake Dunstan area	Under 18
I previously lived in the Lake Dunstan area	18-24
I am a day visitor to the Lake Dunstan area	25-34
I visit the Lake Dunstan area for holidays	35-44
I run a business in/from the Lake Dunstan area	45-54
I own property in the Lake Dunstan area	55-64
I am employed in the Lake Dunstan area	65 and over

If you'd like to follow this conversation and perhaps contribute in the future, please provide your details.

Name Email Phone



APPENDIX 2 – POWERPOINT PRESENTATION FOR THE ONLINE WORKSHOPS

Lake Dunstan community visioning online workshop



describe your vision, determine your future

Who's part of the process?



Why are we here?

- To capture the community voice and create a long term aspirational vision for Lake Dunstan
- A vision from the community, for the community and owned by the community

How are we going to do this?

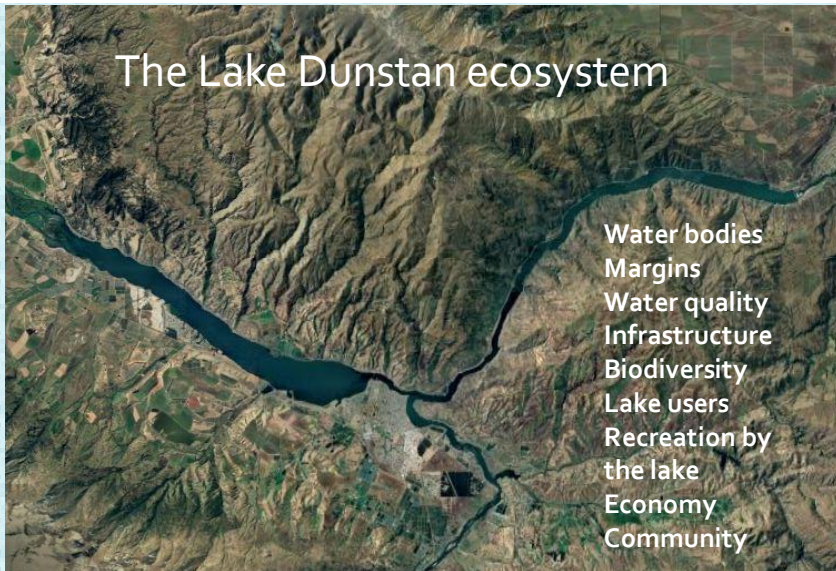
- Surveys and workshops to capture the key issues of today
- Describing what success looks like 30 years down the line
- Setting the priorities for action
- Making recommendations to get us from here to there
- Taking the first steps

Any questions so far?

OK – that’s a bit about us

Now it’s your turn to tell us a bit about you

The Lake Dunstan ecosystem



Group exercise:- S.W.O.T analysis of the Lake Dunstan ecosystem

Purpose : to help prioritise what’s most important to address now

- We’d like you to think about what’s changing. What are the pressures, the forces of change?
- What are the things we don’t know? Uncertainties?
- What’s happened in the past that we didn’t expect?
- What impact do population growth, demographics, climate change and the economy have?
- Lets start with the threats and then look at the opportunities.
- Weaknesses: what are the limitations and challenges that hold us back?
- Lastly think about the strengths– a positive note to end the exercise on.

Take a break and have a stretch.

Group exercise “Newspaper headline from the future”

- Imagine we are 30 years from now and the *Lake Dunstan Blog* is carrying a front page article reporting the successful implementation of the long term vision we are just starting to create.
- What would be the headline that means “we did it!”
- Have a go and create some headlines, be imaginative and have fun.

What do we value?

- Values can be tangible things– those that we can hold, touch or sense
- Or they can be intangible things

Pure water, solitude, employment, wildlife, exercise, recreation, environment, community, boat ramps, swimming, family friendly, trails, accessibility, heritage, culture, fishing, open views, camp sites, opportunity,

- What do you value most about the Lake Dunstan ecosystem?

Thank you. Now what?

- A report summarising the outputs from the online workshops will be sent to all attendees.
- Online public platform to establish which 5 priority issues, outcomes and values have the greatest support of the greatest number of the community.
- A group of volunteers are gathered to review all the information and turn it into a report with recommendations for action.
- The final report is presented to the community for feedback after which the LDCT adopt the report.
- If you want to be involved, put your details in the chat or contact the Trust or Shaping our Future

executive@shapingourfuture.org.nz

APPENDIX 3 – ETHELO COMMENTS

Present day issues

Better management of camping areas and their facilities

I am comfortable with responsible freedom camping in allocated areas. Disagree that it should be "free camping". Everything comes at a cost and camping is no different. Freedom campers should be charged a fee commensurate with the facilities provided. Note NZMC assoc have a small charge on the camp areas they provide their members.

Competing land use and freedom camping has stretched the commercial viability of camping grounds, forcing some out of business or to reduce in size and resulted in reduced capacity. The growth in freedom camping has placed pressure on local resources and deterred lake users from some areas (Champagne Gully is an example) with the cost met by the local community with increased rubbish collection' clean ups etc. which causes some friction. May I suggest that this could be managed with a licence similar to Waitaki Lakes with campers required to "pay & display" to contribute to costs to maintain basic facilities. Given the more short term nature a more modest fee the Waitaki Lakes would be envisaged (assuming it is legal to charge).

Allocated areas with rubbish and toilet facilities only. User pays. Doc camps are \$6 / night with basic facilities. This should be the model. Enforcement required to keep other areas clear.

The loss of camping grounds from the Cromwell area has pushed more freedom campers onto the lake front. A long term plan that involves establishing a camping ground, paying for camping at the lakeside, along with more facilities is what is needed.

If we want tourists to visit, and stay in the area, keeping the lake and camping areas clean and user-friendly is a must

this NEEDs to be Council or DOC run - as land is a prized resource you cant blame individuals for selling valuable land. There are places around the Lake that could be run like DOC or Council camping- enforced 3night max and well organised rubbish stations for recycling / wormfarms/ with smaller bins for "rubbish"

Freedom camping (free) in allocated areas provides an excellent incentive for tourists to enjoy Cromwell, who might otherwise not be able to afford a stay in holiday parks- however needs to be responsible i.e. adequate bins provided on site or more recycling available in Cromwell town, to not overwhelm the site. Also alternative cheap options available such as a DOC managed, basic campsite would reduce pressure on those freedom camping sites for those that can spare a little to stay there.

Provision for local campers around the lake should be included in the forthcoming Freedom Camping Act.

There needs to be a lot more rubbish bins right around the lake, also some signage to remind dog walkers to pick up after their dogs.

Freedom camping is impacting on the recreational opportunity of other lake users and needs to be limited in some areas and restricted or prohibited in others

Support 'better management' but unsure what this means in practice.

The loss of the major camp ground in Cromwell has been a blow to regular holidaymakers and campers from elsewhere. I believe in the creation of low cost, well managed sites with plenty of rubbish containers and toilet facilities so that people are not tempted to take shortcuts with hygiene and not to impinge on the freedom of others

It would make sense for a lake side camping ground near the dog trail grounds. And stop the free loaders

User pays normally but here we are paying for people to stay by emptying rubbish and providing facilities for freeloading people who shop in large centre's and camp in our idyllic spot. And brag about being able to stay for free. I was involved in a community board consultation for alternatives and solutions and have never heard any outcomes or plans moving forward. No regulations obvious. eg Camp grounds work within regulations number of people per facility .health and safety, Distance from fresh water and each other. Etc

Perfect spot camping and / for bike trail is beside north of Bannock Bridge on ottos old block.pearson road. was up for lease. Come on clear our lake edge for everyone to use

All lake users ie campervans ,caravans ,boaties & jet skiers need to financially contribute to maintainance & development of Lake Dunstan.

More people coming brings more cash to the community. Not looking forward to the return of freedom campers

sustainable tourism

Freedom camping should not be allowed. Ratepayers should not be funding free campsites. User pays. Business opportunity for private operators to run appropriately serviced campgrounds for FIT tourists.

Improvements have been made and as a former camper van owner the occasional free spot is great. Money is spent locally. However a basic charge to help clean up etc would not deter people.

We had an excellent camping ground close to the lake and town centre full every christmas with boaties spending plenty and we sent them elsewhere by letting it be sold of !!! all other areas arounds the lake were designed as "rest areas" not camping areas , too late we have missed the chance to get that right

The facilities available seem to be fairly minimal and it is a concern that toilet facilities can easily get overloaded potentially resulting in effluent leaching into the lake. This appears to be especially likely at places such as the Bendigo rest area (not originally designated a camping site) which can be completely packed out over summer. It is unlikely the toilet facilities were ever designed to cope with the load from a large number of campers.

Viticulture and horticulture businesses have done a great job providing accommodation and facilities for their peak time staff. The demand is only going to grow. Businesses need to continue to provide and in conjunction with local councils update the lakeside facilities. Freedom camping is a thing of the past though so pay as you go as if it were a DOC camp ground.

All camping should be better managed, better facilities that are fully funded by the users. A camping charge is small fry compared to a campers other daily costs and will not be a deterrent. There are plenty of areas that could be better developed.

There are only limited opportunities for camping around the lake and users should be expected to pay for upkeep of these areas and to keep facilities clean etc. Other communities designate no freedom camping zones and we should do the same here.

Cleanliness of existing facilities

As further development occurs more facilities will be required. As always the question the is who pays?

Toilets along the new Trail must be a priority

80,000 track users require and expect more facilities, especially now our boarders have opened up.

While the facilities on the lake are better than we see on most in the South Island, keeping these clean & in good order can be challenging as can finding the responsible entity when reporting issues. Perhaps the responsibility for these facilities is adopted by interest groups. -For example the Bannockburn inlet boat ramp and jetty have been adopted by the Water Ski Club.

Maintaining lakeshore facilities is important but is difficult with unrestricted freedom camping and with high levels of use in summer

We pay for it in our rates but this is mainly used by visitors

Toilets a priority with the increased cycle traffic.

More cycle trail facilities needed.

Toilets and bins need to be cleaned and cleared frequently with increasing use of the lake edges for cycling and other recreation.

Commercialisation of the lake

The Kiwi Water Park has been a fantastic addition to Lake Dunstan and the wider community / economy as it has increased the number of people using Lake Dunstan for recreation. This is great as those people care about the water quality.

the three businesses have only been "operational for ?2 years"

the Lake Dunstan trail is not a business as such. I totally support increasing businesses around the lake and within it. its a massive area and encourages more tourism \$\$ and development

Am comfortable with some minor further commercialisation but do not want to see Cromwell become a tourist mecca like Queenstown and Wanaka. A big NO to floating homes...

The growth of Cromwell is important but not to the detriment of our rate payers. We still want the lake to be enjoyed for families, boating, swimming, paddle boarding etc if we let more commercial come then more of our favourite swimming or family spots will be taken

Cromwell has a beautiful lake that deserves to be showcased. There is plenty of room to host cafes/restaurants as well as sufficient room for families to enjoy boating and swimming.

My Whanau has had some primo times at the water park. Really good clean fun for all

Kiwi Water is wonderful I brought my grand children along and they enjoyed it and want to come back.

While I am comfortable with further commercial activities, this should not be at the expense of both organised recreational users -rowing club, boat club, water ski club etc. and casual recreational users.

Commercialisation needs to be subject to controls. This starts with a management plan which regulating parties sign up to, to ensure the lake retains its public amenity.

The lake should have a basic (keep it simple stupid) recreation plan, identifying areas where commercial use would be appropriate and beneficial, and areas where you may want to preserve values such as quiet and natural undeveloped amenity.

Commercial activities should be appropriate to the environment. The current operations as detailed in other comments are excellent examples as being appropriate and adding value. I support localised and well managed commercial operations as they bring value to all. And good coffee ☺

Kiwi water park is the best thing to happen to Cromwell in the summer. So much fun I love the water park and so do my kids

It's a small lake. No further commercialisation should be allowed, at least not without proper consultation.

I would support more commercialization utilizing our lake shores.

Looking to the future, we have to have an understanding of who is likely to come to this area, and why. Domestic tourism has kept some of our businesses afloat through the past few years. The more there is to do here, the more domestic and international tourists will come, the more our own locals will have available in their leisure hours, the more money will come into the area that can feed into supporting and extending the infrastructure, rather than those costs being passed on totally to ratepayers.

Kiwi Water Park is sensational my grand kids love it it's great fun watching

A bike barge connecting old town and the cycle trail will increase tourism, bring it on

please don't commercialise the lake. Family town, not a money greedy town. Keep our authenticity

Why would you want to commercialise the lake.

My extend family has spent many days at the Waterpark and we think it's a fantastic asset for the community The relatively small scale of Lake Dunstan and the fact that road access to the shore is available for much of the lake means it is not greatly attractive for commercial sight seeing boats compared to Wanaka and Wakatipu

I support further controlled commercialization on and around the lake.

The Waterpark is an 'eyesore' & taking up an amenity of lakeside area that was enjoyed by many families & boating. It has closed off a popular area to the public! How much do they pay for doing this?

Agree waterpark is an eyesore, putting in a place where many locals were using. Get it shifted to an area where general public do not use as a frequent recreation area.

The waterpark is taking away an area which was very popular and well used by families at no cost for safe sheltered recreation. The waterpark owner seems to think that a large area can be taken for their profit and the traffic congestion is not acceptable

I love the water park. I went with my friends it was a good laugh.

I really enjoyed biking over to the waterpark with my mates in the summer and honestly can't wait till it opens again!

The lake itself is a commercial activity (a hydro dam) therefore its natural significance is low. Commercialisation of the lake should be encouraged to help the economy of Central Otago and New Zealand in general.

The commercialisation of Lake Dunstan could bring with it more demands to "keep it clean" while also providing finance to fix some of the problems, but may also bring it's own forms of pollution.

Important to balance any future commercial opportunities with maintaining public access and use, not adding to noise or pollution, and not impacting the stunning views.

Sustainable tourism

The two current businesses coffee afloat & kiwi water park are well loved and supported by the local community.

What further commercialisation is envisioned? Hard to know what impact positive or otherwise this could be. Its possible WaterTaxis may become a possibility in the future so might need to think of any issues or opportunities

My boys and i really love the water park we have spent a lot of time there enjoying all the obstacales

I love how it brings family and friends to the water park, great activity and meet up point

New businesses are great but there should be proper consultation with the community- the water park took what was the most popular swimming area for families, telling regulating entities such as Linz it was never used- I interviewed Linz they said they were in Chch and never been to the spot! I'm not anti the waterpark, it's a great asset for Cromwell but in the wrong place. Proper planning will ensure the best of both worlds and ensure the lake doesn't get filled up and taken advantage of.

Kiwi Park is great for families however it means the only swimming place that was sheltered, quiet and away from vehicles by the lake disappeared.

Kiwi water park is awesome. It's a banging activity in the summer

Kiwi water park is fantastic and very safe as there are a lot of lifeguards. Fun for the whole family
Commercialisation on the lake and environs should only be allowed through a proper planning process that includes public consultation and takes into account the community and all lake users.

The loss of the Lowburn Swimming Area to water park is a prime example of a community resource giving way to a commercial use which could be located elsewhere on the lake with proper planning. Hundreds of local families have lost a safe recreational area that could be enjoyed sustainably and for free to a commercial enterprise which benefits only those who can afford to pay. This occurred with absolutely no public consultation.

As the cycle trail extends up towards Wanaka, there will be a demand for trailside cafes, bars, accommodation and some cycle-friendly destinations attractions along the way. It's important to hold onto our 'Central Otago World of Difference' ethos - different to Wanaka and Queenstown

Increase boat access via a marina and more ramps

Because of the smaller scale of Lake Dunstan I think it unlikely that demand for a marina will be low because of the likely low number of larger boats which need to remain in the water.

Lake Dunstan is better served by boat ramps than any other lake I know of in NZ.

As one of the longer standing and more frequent users of the lake for water skiing and boating activities (since 1992 and multiple times on average per week throughout the spring, summer and autumn months) the facilities are better than many lakes in the South Island. As a member of Coastguard, and following my involvement as an observer in joint Police, Search & Rescue, Fire Service and Coastguard exercises held prior to and since the opening of the Lake Dunstan Cycle Trail, there is an identified lack of a safe jetty for most of the Cromwell Gorge which would aid in safe access for search & rescue and accidents on the trail. This could be improved with 1) a jetty at Champagne Gully and 2) a ramp and jetty opposite Hugo Bridge.

The Bendigo boat ramp is hopeless, nowhere to tie up your boat, no beach to pull into. Seriously needs a small jetty. Not to mention the weed.

Sort out butchers drive... big parking area

It would be great if some of the ramps had floating walkways like the one beside the boat launching ramp beside the camp ground at Lake Hawea, it would be so much easier for someone with a physical disability get on and off a boat.

Improvement of existing ramp facilities including relocation where affected by siltation is required. Otherwise we don't think there should be significant expansion in lakeshore boating facilities because that may impact on other recreational opportunities. The boat trailer park at Lowburn seems to be dominated by camper vans All lake users ie campervans ,caravans ,boaties & jet skiers need to financially contribute to maintenance & development of Lake Dunstan.

Development of a Camping Ground at the Cromwell Race Course area to cater for NZ families who want to have an affordable camping experience.

Develop a Campervan Park for self contained Campervans.

Develop a Facility for non self contained cars vans etc...

Marina seems like overkill but a new large boat ramp with plenty of parking is required to replace the loss of butchers drive

There is a small Marina outside of the Pisa Moorings apartments..... but done well encourage more boat users Also the jetty south of Deadman's Point Bridge is useless for tying up to. The rubber tyres need fixing to wooden rails so that boat does not get smashed up underneath the structure. Do for both sides.. A pontoon with ramp could be relocated from Butchers Drive and put on end of Old Cromwell jetty - into channel.

The Butchers Drive boat ramp could easily be made usable again with a day's work with a big digger. In the past, when there was a northerly wind making the main lake unusable, that ramp was a hive of activity, now you can't even launch a jet ski. While wholesale silt removal is not viable, some selected areas could be kept clear and greatly enhance the usability of the Kawarau Arm. Likewise, at Old Cromwell, the area around the jetty should be cleared out so boats can tie up and enjoy the facilities. Furthermore a proposal is being investigated which could redistribute silt using a high spec dredge and geobags to redefine the waters edge and make it more attractive and usable.

Boat ramp at Lowburn seems to be congested by campervans. limit the area they can occupy. this is a safe ramp and harbour to use. more floating jettys for access for families and people with impaired mobility Maybe upgrade McNulty boat area. Multiple short term boat jettys, marked parking areas. Reinstate Lowburn swim area to help remove swimmer danger at McNulty.

Clyde end of the lake boat facilities are woeful, 4 pontoons that are always overcrowded on a nice summer day. Annan gully on the other side could be real good spot with the addition of a toilet and few seats with shade cover, would also benefit cyclists/walkers on the trail. There's plenty of other spots on the other side that a bit earthworks and construction could make a nice tie up/picnic spot without boaty families being perched on tiny beaches getting sunburnt.

Increase the quantity and quality of picnic areas

The Concrete picnic tables look terrible and old and "dam era " it looks like it was done in the 80s with left over material - did someone order too many drain pipes as the legs for tables?

Make it look loved and people will love and respect - currently look awful and unwelcoming.

Great point and not widely know or acknowledged the generosity of Lions - THANK YOU Lions

Some of these have been vandalised and/or have been in a state of disrepair for years while other are sighted in places that get little use. Increasing or repairing these in the more popular spots would add to the facilities.

Yes most of the existing picnic areas are very ugly. Basically because of weeds and dry prickly grass and old picnic furniture. Picnic areas need to have soft mowed grass or be stone chip otherwise they are unpleasant.

The ugly concrete monstrosities placed around the lake are uninviting. One or two more grassy attractive areas such as Alpha Street would be nice.

Current BBQ's are at Old Cromwell and Alpha St Reserve, are Gas not electric and were supplied and installed by the Cromwell Lions Club. They are free to use and the gas for Alpha St is supplied by the Lions. Gas for the Old Cromwell BBQ is also replenished by the Lion Club. To put more of them around the lake would probably be beyond the ability of a service club.

More active management of the lake shore for recreational use is desirable. This does not always require additional facilities except in high use areas.

Improved amenities only encourages backpacker type of campers, they bring extra problems, they mess and move on our camper van traveller's seem to be more caring of the environment they are staying in. I have seen all sorts of horrors left behind from so called self contained campers. Most people have picnic blankets or something to sit on. I have not witnessed the public BBQ being used very much, and they are left for someone else to clean.

more grassy areas like Alpha street. That gets a lot of use on fine days.

Always places to find a spot, encouraging them to clean up after themselves probably the best idea

I use the picnic tables regularly - they are seldom clean, but taking own table covering and cushions to sit on, is not difficult. Whatever design or number, the wildlife will always mess it up - as do some thoughtless humans.

Would be great to see some more beach and Picnic areas on the Clyde Cromwell bike side of lake

There are plenty of huge rocks around Central that already provide amazing picnicking spots. Could we create some picnic/socialising areas alongside the lake using some local rocks to sit on and perch food on - we could also position some flat rocks alongside the waters edge - in the lake - to make easier access for swimming - you can see this concept in Queenstown.

Lack of edge cafe/bar/restaurants

Imagine if the boat club rooms at McNulty inlet were turned into a cafe/bar, along with nicer landscaping (and a wind break from the nor'easter)?

Provide facility and ease of licenses for pop-ups. How nice would it be to be able to pull up in your car boat to various pop-ups around the lake. Lowburn harbour pizza and brew bar!

Old Cromwell is one of the most beautiful spots and a great place to take family and friends when visiting our town. If we had more shopping and eateries down there it would be amazing and such a hub for Cromwell.

During summer & public holidays, allow food vendors to set up to sell food at places around the lake

Take your own food and picnic. There are plenty of cafes and bars in all of the towns around the lake already

The seasonality of such endeavors outside of the likes of the heritage precinct may prevent commercial viability. The area opposite the Butchers Rd boat ramps, underneath the houses higher up on the hill, could be retained and small commercial premises could be put in here as an extension to Old Cromwell.

This would boost economic development and opportunities, It would be awesome. Old Cromwell town committee might benefit from fresh ideas and faces to help this happen quickly rather than developing a new area - freshen up what we have- paint it up, allow diverse businesses and get rid of the scary mannequins.

Can't make sense of the question so put neutral.

More cafes and restaurants around the lake would be great!
keep it natural, more buildings = more rubbish, unnatural structures, noise.
Take a picnic and keep it as is. There are plenty of options nearby if you want to buy something.
Heritage precinct provides hospitality.
I would like to see a cafe/bar/restaurant built over the water.
More visitors to the cycle track means more tourist facilities such as food and drink options.

Lack of management plan for the lake and its surrounds

All of the other issues identified in this survey could/should be included in a management plan for the lake and its surrounds. Priorities can then be set within the plan, and interdependencies identified so that management actions are co-ordinated for optimum effect, e.g. control of rabbits and weeds and native landscapes restoration clearly need to be actioned together.

So many of the previous questions show up the need for a Management Plan

A pragmatic, overarching plan that encompasses stakeholders is needed

Given the number of responsible entities involved a comprehensive management plan is essential if we are to address the issues of concern.

I miss a thought about sustainable commuting, cycle trail around the lake not just for tourism but for people living around the lake to commute. Look at Europe!

Lake Dunstan has always been the poor cousin of Lakes Wanaka and Whakatipu. With the water park featuring each summer, the cycling tracks, increased population in the area, Lake Dunstan is more and more popular. Old Cromwell is a popular area but the lake area in front of the buildings needs help!

An overall management plan needs to be accepted by all stakeholders and put in place

Approximately 50% of the foreshore needs to be better maintained to enhance the entire lakefront for recreational use by locals and visitors. A plan and transparent governance is required.

It will only ever be possible to manage the shoreline in areas where there is significant public use. This may mean more areas than other lakes because of the easy access to Lake Dunstan.

we need this for the future of our lake and to progress forward

Yes - lets plan!

Again not a clear question but a management plan probably a good idea.

There are so many facets to the management of such a big resource, especially as the needs and wishes of the community that live in the area must be taken into account, as well as financial, commercial and long term environmental effects to be considered. Without a plan there is a risk of nothing being done well, or duplication of efforts, and poor lobbying strength for schemes and funding.

What happened to the Lake Dunstan Management Runby the Codc

I agree with the previous guest comments

Its Wakatipuhas been forever 😊👍

A management plan for the lake needs to be developed which takes into account community needs for the future and clearly identifies stakeholders and responsibilities.

The Lowburn Swimming Area was identified as a safe swimming zone and somehow was just given over to water park with no planning or public consultation. This should be reinstated and other good sized safe swimming and recreational areas need to be provided for a growing population and increasing popularity of the lake. This would include management responsibilities on the lake shore and also take into account safe traffic access.

Native landscapes restoration

As natives are very slow growing and provide little shade in comparison to the existing exotics (which provide advantages such as colour, habitat for birds, land stabilisation and the advantage of many being deciduous) planting of natives needs to be interspersed with existing flora rather than removing and replacing existing fauna.

Love the work that has been going on with the native plantings. They look fantastic. It's a great way to engage the community and built pride in our region.

Love it Mokihi Reforestation Trust has done an amazing job - it will be fantastic in 10 years to see how amazing it looks - more support for that !

The lake is an artificial lake. To return it to how it was would be to get rid of the lake. Now that the lake is present it is a factor in climate change see:

<https://www.theguardian.com/global-development/2016/nov/14/hydroelectric-dams-emit-billion-tonnes-greenhouse-gas-methane-study-climate-change>

and: <https://www.ncbi.nlm.nih.gov/pmc/articles/PMC7610662/>

I believe this penalty is worth it for the opportunities for recreation and commercialisation that the lake gives Central Otago at this time.

Natives can be very boring! Why not plant more vibrant plants?

"dense grey shrublands" ? No, I don't want to see that around our lake, how depressing, I want spring green and autumn golds and reds, along with an equal mix of exotic and natives.

Efforts to revegetate lakeshore areas with native species are fully supported but existing lakeshore vegetation also serves a valuable service in enhancing the lake's habitat values and 'providing shade from intense summer heat' etc

I think this action would increase fire risk. Isn't that it was destroyed in the first place

A Tiaki approach to natives and our waterways we will be a real win for our area. I miss the bird life down here compared to Wellington and Waitakere Area. The barren landscape is something that can change with reforestation work and should be a long priority with climate change and the govt's work to reduce emissions from our country now a top priority.. The Zealandia Karori Eco Sanctuary in Wgtn is a been a great example of how one area of a region can improve bird life in many areas of a town/city.

native ecosystems are very important for people's mental and physical wellbeing

Progressively replant willow on lake edge with shading natives

Progressive replacement with natives would be great for supporting the return of native birds.

By all means plant natives if you can get them to survive, but they will be very slow to make a difference. I favour natives mixed with the more colourful deciduous trees for shade and visual pleasure.

Native plants are not necessarily slow growing. Just look at the poor growth of many of the terrible looking crack willow. Kowhai, with its beautiful yellow flowers, the shades of kanuka, the stunning form of cabbage trees, flaxes, lancewoods and toi toi....the list goes on and there is wonderful diversity from the riparian species to the dry tolerant species. These all thrived here previously and given half a chance, will colonise and self-seed readily. In just 20 years, the tui and bell-bird populations have expanded significantly with the increased development in the area and increase in native plantings as a food source and habitat. A careful look shows that there are many areas where the natives are trying... Let's further that!

Although the introduced species are a weed, there are some who time their visit to Central Otago especially to see the 'wildflowers' - fields of Californian poppies, wild thyme and broom etc. Agree that regeneration of native species is important, yet it seems unlikely that the 'pests' will be completely eradicated - should we embrace and promote both to encourage visitors to the region.

Noise Pollution around Lake

Strange question. There is considerable road noise at almost all areas of the lake.

Again, a simple management plan is needed to address this. I'd love to see Bannockburn Inlet identified as quiet zone as it has a remote feel already.

It would be worthwhile setting aside some areas for more passive recreation along the lines of the boat exclusion area in Bannockburn inlet in order to provide a bit of separation from power boaters in a few more areas

This is a very poorly worded statement and I've voted neutral because I have no idea what it is you are asking me to support or otherwise,

More scare tactics put forwards about the proposed Tarras Airport.

I don't read of Jacks Point (5km from Qtown airport) residents complaining of jets flying overhead, what info do you have that Lowburn/Pisa Moorings/Cromwell residents will be more affected at 22km away?

I love the Grebe and I have been actively watching the Pisa Moorings new birds this year. It was unpleasant to see them swimming out to the middle of the lake with Jet ski's coming straight for them as they can't move as fast as a jet ski or boat. So worried about them this summer after a big increase in the breed this year. (right up

to smiths way)

Airport : Having lived over a landing flight path in Wgtn and with family in Auckland under another. It does have noise accompany it and will always depend on the aircraft used. The larger the aircraft the louder the air brake sound is coming into land while the plane slows down.

The down side of a lake with extensive road proximity. It is what it is.

The lake is mostly surrounded on all sides by highways and traffic noise which, even at the widest places can be heard on the other side of the lake. Barring or curbing boating and recreational activities will not resolve this as the vast majority are not excessively noisy compared to the constant drone of the normal road traffic. Tread carefully on this issue.

Noise pollution is a factor but there are plenty of natural lakes people can go to if they want calm. They shouldn't expect it on an artificial lake in a populated area.

Another weird statement with no indication as to what the vote is for. More quiet spots? Less traffic? Less power boats? I suggest that the questions could have been better crafted so that policy has more clarity.

agree, the question does not make sense as it is not related to something specific

The noise, from jet boats in particular, is excessive most days in Bannockburn Inlet - in conflict with and a danger to other users. There is plenty of opportunity elsewhere in the lake for powered waterskiing and hooning - the latter have total disregard for speed restriction within 200m of shores. The 5 knot limit should be enforced over the whole inlet.

With existing roads either side of the lake there is likely nothing that can be done to mitigate noise from those. Boating is an active pass time for many and in my experience at the head of the lake they are generally well behaved. As far as the airport is concerned for those of us using the head of the lake and living directly under the flight path (if the airport goes ahead) concerns about aircraft noise are NOT merely scare tactics and will adversely affect our quality of life including the peaceful enjoyment of our surroundings. It might be a different story for Cromwell residents.

Would earth bunds be installed alongside some sections of SH6 & SH8 to reduce traffic noise be practical? The view of the lake while travelling on the road is also important, so these sections would need to be selected carefully. Low flying commercial aircraft will considerably add to any noise pollution - how hard would it be to get a long-haul aircraft to do some low altitude test flights along the proposed landing routes ?

If boat and jetski speeds were reduced closer to shore, the noise levels for those on the shore/ in the shore-side water would be reduced. Maritime New Zealand (National) rules state 'you must not exceed a speed of 5 knots (a fast walking speed) if you are within 200m of the shore.' The Lake Dunstan Boating Guide (regional CODC bylaws) states 'you must not exceed a speed of 5 knots (no wake) if you are within 200m of the shore (North West of Pisa Moorings)'... which on my map is mainly farmland & vineyards - there is no lake/shoreline NW of Pisa Moorings until you get to Wanaka?? The only other speed restrictions are 5 knots within 50m of a person in the water or another boat, & 5 knots within 100m of a boat displaying a diver's flag.

Provision of more pontoons

No point in adding more pontoons, until a plan has been devised to keep them all clean

Coming from a local kid who's been raised in Cromwell their whole life, more pontoons would be greatly appreciated by the younger generations, and from one of the above points the pontoons would need regular cleaning to keep on top of algae and bird droppings which ruin the experience in the summer.

I feel that we need to create more family friendly areas, most kids now love to kayak and paddle board etc the only problem with the pontoons is the high risk of Duck itch that we are seeing more of. If we had areas where there was not boating and great shade or nice cleared areas where you can set up your own shade.

Older kids are great at finding their own favorite spots for swimming/ mud slinging/ fishing at the lake and don't need pontoons. These would mostly be used by visiting kids. But safe swimming areas for families with younger children would be a benefit.

Pontoons definitely need to be better looked after as the bird droppings on them never get cleaned off.

Removal of weed and maybe some sand on a couple of small beach areas? Kids will play in the water, don't need more pontoons, especially if ones there already are not cleaned occasionally.

Not needed if good access available to pleasant swim/picnic areas.

Position of pontoons - note the pontoon that was relocated from the Lowburn Swimming area was barely used last summer as it was pushed out by the water park into an unattractive shallow and noisy part of the lake right beside the water park. Management plan urgently needed to look at provision of safe swimming and non motorised craft areas; safe swimming areas need to be extended and not given over to commercial enterprises.

Easier access in to the water for elderly, young kids and those who are not sure-footed could be improved by adding smaller pebbles or sand in the shallow areas in the swimming areas - and also put some along the foreshore where families stop to picnic. The larger boulders are slippery and unstable.

Rabbits and weeds

Develop a pragmatic, multi party, long term management plan to a) monitor and b) manage or mitigate these issues.

Rabbit control is essential and will be required long term.

Lake Dunstan hasn't had much love from the ORC and we need to lobby them to do more than just the bare minimum. Controlling the lupin and willows will make our whole region look much more cared for.

its very unclear with the statement above what it is you are requesting a vote on. I have supported the need for better control of the rabbits and weeds.

Recent control of wilding pines along the Kawarau Arm of the lake has made a positive difference and is welcomed. Control of other lakeshore vegetation needs to be more considered because trees such as willows can provide cover for wildlife and fish and shade and shelter for recreational users. In the long term lakeshore woody vegetation needs active management which may involve progressive replacement of invasive species with non invasive species.

Rabbit control on unfenced lakeshore or riverbank areas is a dilemma because use of poison would be most unpopular and shooting would not be safe in many areas given the public use and proximity of residential dwellings. Adjacent property owners need to maintain their rabbit proof fencing

Agree that lupin and rabbit numbers are excessive and need to be controlled. Willow minimally reduces access to the lake but provides essential shade in summer. They are sought out during summer for this reason.

It seems to me that ORC is Dunedin focused and Central Otago is not high on priority list when allocating resources, despite huge increases % wise in annual rates.

The elected bodies set up lead control of pest animals and plants have not been leading strongly enough. I think there needs to be concerted organised efforts, led by the elected bodies, to control or eradicate pests.

Bring back a modern version of rabbit boards. Progressively replace Willows around Lake edge with appropriate Shady natives

Yes totally unloved by the ORC - and Council - like mowing behind the kiwi water park in late Feb - - it looked terrible the whole summer and as everyone leaves it gets mowed. Under cutting of the willows would be great - tidy it up and enable more picnic spots. the Pisa Pest control have done an amazing job.

Weed control and general maintenance of the East side of the Dunstan arm is awful. Lake access is limited, very little effort has been made to clear scrub and self sewn trees, bush etc.

Long time plan essential for control of Rabbits & Weeds.

What am I voting for here- very unclear

Wilding pine.... whatever

The only good rabbit, is a dead rabbit! Any way of getting rid of them is better than doing nothing (or very little). I like the lupins.

Sooo frustrating when u can't take the boat round to old cromwell

Willow growth & spread is very quick and every year there is a reduction in the areas available for recreation.

Having said that if the willows are removed they need to be replaced with a native species to retain the bird life/habitat.

Removal of exotic weed species and encouraging native riparian species.

Although the introduced species are a weed, there are some who time their visit to Central Otago especially to see the 'wildflowers' - fields of Californian poppies, wild thyme and broom etc. Agree that regeneration of native species is important, yet it seems unlikely that the 'pests' will be completely eradicated - should we embrace and promote both to encourage visitors to the region.

The effects and impacts associated with the siltation of the Kawarau arm

Again, similar to lagarosiphon control, this is likely to be a site by site solution. We cannot hope to clear large areas, and should accept braiding and wetland type ecosystems to emerge, but we can tend to areas where boating or visual amenity is important, such as around Old Cromwell.

I think we need to accept braiding of the river is inevitable however would like to see Contact take ongoing responsibility for keeping the shoreline at Old Cromwell clear of both silt and flotsam.

More pressure needs to be put on Contact Energy - through MPs if necessary. Contact Energy should be regularly removing logs, driftwood and rubbish that are deposited on the rapidly growing sandbanks in the

Kawarau Arm. A few areas should be regularly dredged and kept clear of silt, weeds and driftwood, to allow for swimming, picknicking, boating, and fishing, and to keep the lake and surrounds looking beautiful for locals and visitors.

The process of silting will continue for as long as the Shotover river runs and this should be accepted; but it should not be accepted that Contact Energy do little to mitigate the effects. I would like to see the area around Old Cromwell kept free of debris and silt.

Restoring the appearance and ability to use the lake and shore in front of the precinct and Butchers drive is vital for both locals and visitors alike. These areas have previously been extremely well utilised by locals and need to be able to continue to do so to take pressure off other storefront areas and boat ramps.

Currently visitors are welcomed by a very unpleasant sight in these areas, and frequently smell. This will jeopardise Cromwell's reputation as a destination.

Dredge it, remove it

This is totally unacceptable this has to take priority as visually this is so important for all the tourists we are now getting on the bike tracks this lake is vital for holiday makers to use for boats and swimming our lake could be as beautiful as wAnaka dredge and raise the water level

The silting up is a natural process, leave it be.

While the silting is a process that cannot be stopped, it can be ameliorated in the area at Old Cromwell. There are ways of doing so and a number of parties can and should contribute to a solution as part of a management plan.

Transition to a river is inevitable. Managed planting and a new plan for the boat ramp area is required. Maybe a new public facility? Open air, lake fed pool for example?

One of the biggest challenges for the area from this change is the loss of the boat ramp. Huge pressure is now being placed on the other facilities due to the loss of this ramp (plus lowburn being unusable at times due to waterpark & campers). A new large and accessible ramp is required at another spot on the lake to spread the load

The siltation issue needs active management where it impacts on lake amenity but requires some pragmatism. A clearer understanding of likely changes in the lake due to siltation over the next say twenty five years is required along with identification of realistic management options.

Removal of driftwood from the Old Cromwell foreshore has been positive and alternative boat ramp sites in areas not vulnerable to siltation need to be identified

Silting up of the lake bed was always going to happen, and predicted. Totally brainstorming, I think it would be great to see someone build and establish a replica 'gold' dredge as a tourist attraction (charging for people to come on board and see the process), and the silt barged off to the lake edge and used in some way, eg making bricks, or backfilling barren valleys, as a byproduct. This could keep a central channel open for longer before that part of the lake becomes a braided river. No-one is going to fund dredging that much silt unless there is a commercial benefit to doing so.

Short of dredging the silt which is not practical because of the annual volume coming down the Kawarau, little can be done except keep the area tidy while it slowly turns into a braided river.

I was involved some 20-25 years ago as a director in the Central Otago Chamber of Commerce following the Alexandra floods. It was widely acknowledged then that the construction of the dam would over time shift the problem to the Clyde Dam catchment, particularly at the confluence of the two river systems -the Old Cromwell precinct. The challenge then is -Who is responsible? How do we mitigate these issues? And who pays? On one hand the region and its economy wouldn't have become what it is today without the lake so it is our biggest asset, albeit accompanied by these consequences.

There is a real need to do something with silting; I remember Contact Energy stating it was not going to happen for many years & when it did, they would address & 'fix' the problem; they should be held accountable & dredge out the silt & take away as promised.

Those people that think the silt can be dredged are dreamer's. This subject has been extensively discussed and researched many years ago. The environmental impacts of dredging are far greater than letting the river do its thing.

The benefits of the dam were supposed to be for all of nz. Contact should not be making a profit from what was paid for by the taxpayers. Contact and central government created the problem so should fix it.

I raised this issue with the ORC several years ago due to my concerns around boat safety in the arm with the hidden silt, obviously it fell on deaf ears.

What are you looking for support on? Please put forward some feasible options or plans for what is possible? If nothing can be done about the the sedimentation, so be it. We must manage the visual effect this has on the lake by keeping the appearance clean.

Has any feasibility study been done re dredging the silt and extracting any gold to offset the cost. The Kowarou river is fed (gold) from the Arrow river and surely there is a large amount caught within the silt. There must be a use for the silt when dried for landfill etc. (Watch goldrush on Geographic channel)

Annual silt maintenance around the Cromwell pontoons and the Old Cromwell Jetty could be easily accomplished with a long boom digger. It's no fun having your boat stuck in silt.

there needs to be solid plans for these forming silt beds to be revegetated in native species before we have yet another willow choked river that will not be able to be seen or safely navigated

The scale of the silting means the Kowarou Arm will become a braided river. Contact Energy need to accept responsibility and do something for teh Cromwell community.

Love the open-air lake-fed pool idea, but would it be better to be another destination on the bike- trail further up the lake – big views, infinity pool– and heated (like at Lake Tekapo :)) Water heated by Contact Energy of course :) Maybe the huge parking area at Butcher Drive boat ramp could be utilised for a large open shelter area for cyclists –secure bike-parking area for locals heading to the new Events Centre - shade from sun, shelter from wind and rain – a place where cyclists on the track can rest out of the elements/re-organise their packs and clothing. Provide some undercover picnic tables/toilets/maybe phone and EV-recharging stations. OR/AND Storage and Info Centre for the volunteer groups who manage the lakeside environment.

The impacts of lake weed

I am concerned about the use of Diquat, especially as pertains to children swimming and drinking/ ground water. We need to properly understand the ecology and what changes we can make that are self- sustaining- ie can we create a lake ecology that isn't constantly absorbing huge funds and effort to control?

Not happy with chemical control and would like to see some form of removal that could use the weed as compost or worm food.

This is confusing! You've stated the problem and advised the limited efforts currently undertaken and who funds this.

If I support this am I supporting the status quo? Ask a specific question: Should more be done the clear lake weed prior to each Summer? To this I strongly agree.

We watch boaties clearing their propellers day after day over Christmas, by New Year they've learnt and don't come near the west side of the Clutha arm from Lowburn inlet north!

While we agree lagarosiphon is a nuisance in some locations and needs management, lake weed (In Lake Dunstan's case commonly lagarosiphon) is an important component of the lake ecosystem providing a substrate for periphyton growth, invertebrates, cover for native fish (eg bullies) and trout, and a component of habitat for lake wildlife.(refer to research by Tobias Bickel on lagarosiphon in Lake Dunstan)

Control of lagarosiphon in areas of high recreational use as at present makes sense but expansion of control in any significant way is misguided.

Lake weed should be removed by other means than using herbicides. Often the signage/information on when this has been used is lacking and concerning when so many people, incl. kids who wouldn't even think of this issue, use the lake for swimming.

Targeted management of the lake weed in areas where it adversely affects recreational use is crucial to the ongoing attraction of the region.

Ideally weed control without the use of chemicals which are harmful to ecosystems and people and animals who are using the lake.

Chemical eradication is not sustainably efficient

Thanks for that useful info 😊

I don't like herbicides being used in our water. Would like to see weed sent to worm farm or some other place to create compost.

Keep controlling by using best practices. Better management required to use sprays when conditions are the best, too big a lag between planning to spray and actually spraying. Request contact to get the lake low when spraying so helicopters can see the weed beds. Increase the areas of value ie printers bay.

If weed is not cleared along a lot more of the lake where swimmers and boats etc find lake access difficult, then the remaining issues are irrelevant.

As a summer swimmer/kayaking at Pisa Moorings with my kids. It is rather unpleasant being around the weed and in Britany cover a popular inlet in summer.. We try and remove the floating parts away from the water and up high on the ground so it can die. The lake weed issue is not an easy solution so do appreciate what is being done to control as best it can be with the funds available. Aotea Lagoon (Porirua) also had this problem and could be an idea that is explored via conservation volunteers down here (just an idea) as our lake is a lot bigger and has many areas of weed. <https://bookings.conservationvolunteers.org/project/aotea-lagoon-clean-up>

We use the lake a lot for boating, fishing and shooting and in almost all activities the extent of the weed limits our ability to fully use the areas we would like to. While we appreciate the benefits the weed provides for trout it would be great if the extent of weed was reduced.

Lake weed impacts on both the appearance & use of our greatest asset. In my opinion the control entities do not have the willingness and/or resources to completely eradicate so we need to be realistic & focus on control with appropriate prioritization.

Uncontrolled lagarosiphon growth will significantly impact on the amenity of the lake. Control can only realistically be undertaken in areas identified as a priority. Methods other than those mentioned which are used in other lakes e.g. matting should be explored for possible application in Dunstan. A proper management plan would include a range of actions in relation to lake weed.

What are you asking me to support ? the status quo which clearly is not working, or more effort to control the weed. There is no pleasure in boating at the Bendigo end of the lake.

I agree with Sandy's comments- what are you asking me to vote on?

More effort needed for management of weeds - the more this can be done without the use of pesticides the better.

Control of weed is an urgent issue could the use of woven mats be explored as they are doing in Rotorua [https://www.rnz.co.nz/news/national/457467/te-arawa-lakes-trust-utilising-matauranga-maori-to-combat-invasive-](https://www.rnz.co.nz/news/national/457467/te-arawa-lakes-trust-utilising-matauranga-maori-to-combat-invasive-weeds#:~:text=M%C4%81auranga%20M%C4%81ori%20is%20being%20woven,species%20in%20the%20Rotorua%20lakes.&text=The%20trust%20in%20charge%20of,improve%20water%20quality%20in%20Rotorua)

[weeds#:~:text=M%C4%81auranga%20M%C4%81ori%20is%20being%20woven,species%20in%20the%20Rotorua%20lakes.&text=The%20trust%20in%20charge%20of,improve%20water%20quality%20in%20Rotorua](https://www.rnz.co.nz/news/national/457467/te-arawa-lakes-trust-utilising-matauranga-maori-to-combat-invasive-weeds#:~:text=M%C4%81auranga%20M%C4%81ori%20is%20being%20woven,species%20in%20the%20Rotorua%20lakes.&text=The%20trust%20in%20charge%20of,improve%20water%20quality%20in%20Rotorua)

I strongly support the control of lakeweed, though not by chemical means. A lack of control may lead to the choking of the waterway, the degradation of the lake shore and render the lake usable for recreation.

There must be an eco way to control the weed. The beach at Old Cromwell is dreadful during summer and lake low

All lake users ie campervans ,caravans ,boaties & jet skiers need to financially contribute to maintenance & development of Lake Dunstan.

Silt should be dredged up and placed into embankments to create a wild life refuge in three locations, between the Office and the Junction, another below the present Hall, the last west of Printers Bay boat harbour.

With walkways, trees and seating added to create an asset to the lakefront.

Contact Energy should be made to pay for its design and implementation.

Surely we are best to harvest and use as mulch for the garden. We talk about spoiling our waterways but then we use herbicides in the water, ridiculous. Also next time this is done, more ways of communicating this to everyone, not just social media and not placing signs out after its sprayed.

Keep doing what you are doing. Control is appropriate no point in wasting money on attempting eradication

Keep controlling the weed, in the best way possible, however eradication would be much better.

As a boatie and occasional swimmer /biscuit rider/ fisher - I find the weed spooky to touch and weed fouling the prop and lines annoying.

Targeted management of the lake weed in all the areas where it adversely affects recreational users needs to continue to protect Lake Dunstan as an asset. Old Cromwell is an eye-sore at times when it has potential to be magnificent. If there are alternatives to Diaquat then go for it; but if not, then I support removal followed by spray: with plenty of notification thanks.

As a member of the rowing club, I find the presence of lake weed close or at the surface of the water dangerous. The rowers' oars can easily be caught up in the weed and this can tip the boat over very quickly. The weed also gets caught up in the safety boat's motor which is also a danger.

Use of diquat must be phased out.

Trying to find a weed free place to swim is very difficult. The attempts to clear it at the Alpha St swimming hole are minimal and swimming is unpleasant.

The lack of fish passes to allow species to bypass the Clyde dam

Tuna = Māori for eel

I'm surprised salmon aren't mentioned here. Keeping the lake stocked with salmon fingerlings would provide a wonderful resource for locals and visitors. This should be paid for out of our fishing licences.

There needs to be a much more determined response to the fish passage issues and associated fish population declines caused by construction of hydro dams on the Clutha River. Eel migration too and from the sea is a particular concern because of their status but there has also been a significant impact on the Clutha's historic sea run salmon population

A fish ladder could be a great tourist attraction

Contact has plans in place to mitigate the passage of native fish.

Adult tuna??? -I presume you mean salmon? Yes, this is an issue for DOC, Ngai Tahu and local interest groups that has wider implications NZ wide.

Better ensure fish passes be installed at Roxburgh as well as Clyde Dam.

Unkempt lake margins

Support greater management of the lake shore but a diversity of lakeshore areas adds to the recreational opportunities the lake provides. Not all the lakeshore should be closely managed but active management of lake shore vegetation is required to enable access to the lake and to maintain lake amenity

Collaboration and combined efforts between ORC, CODC, LINZ, DOC, and Contact Energy in conjunction with local interest groups is the best solution.

More coordination and accountability needed from the responsible bodies. That our residents commit time and effort to this area speaks highly of our community spirit.

A comprehensive management plan could/should bring together all the relevant parties for integrated action, including community groups and volunteers. Having all parties sign up to the plan leads to accountability for actions and outcomes.

Not sure if I understand the question. Am I supporting Unkempt lake margins or cleaning them up?

More collaboration and effort between all parties to upkeep the lake margins in needed

A lake edge doesn't need to be "pretty" but it should be managed in terms of rubbish collection or a blanket request to remove all your own rubbish (no bins provided).

the "Little management" makes it look unloved. the controlling parties named above really need to lift their game. When the dam was built I gather there was a plan for care and infrastructure which never happened . They need to look at this and get moving - this is not Lake Dunstan Charitable Trust job - but great that you are bringing to light their responsibilities.

The margins are a mess, there is very little effort made to manage this, in its current state why would you want to go there?

I hope it will be more realistic than the token approach to rubbish collection presently employed at Rotary Glen boat harbour.

So many people involved so it is quite confusing on who does what? Where other areas in NZ have fewer stakeholders eg A local or regional council.

What we value

I value an un-commercialised lake

The Water park is fantastic and I encourage more commercialised activities on the lake

I disagree and believe that the Water Park is great for attracting tourism groups from Queenstown, resulting in cafes and other small businesses thriving.

It depends on the level of commercialisation. I think The Water Park, for example, is fantastic for Cromwell and families staying in the area. I wouldn't like to see commercial boats ripping up and down the lake like QT. Commercialisation in a controlled and limited way adds public amenity to the lake e.g. the Water Park and the food and drink boats serving bike trail customers.

Oppose this. Commercial activities like the water park are an asset. My whanau loves the water park Kiwi water park is so good for the area. Also the lake is a hydro dam it's already commercial. Still plenty of room for everyone else

Want more fun things like the water park and hope the water park keeps getting bigger and better every summer

There is no reason for a commercial hydro lake to be "un-commercialised".

That doesn't make sense it is a hydro man made lake. Love kiwi water park, food & coffee boats and want to see more local businesses thrive here

My other comments point to this. While some/many value and support motorised boating and attractions like the waterpark, others including myself value passive places where noise is minimal.

Proper planning required and community should be consulted about commercialisation that is going to impact on public use and enjoyment of the lake.

A balance is needed.

The garish/gaudy water park does not add any public amenity to the lake, it actually prevents the public from using a very sheltered and safe swimming spot.

In restricted areas and level playing operate on level playing field with other business's

This should be regulated, we want some development but not congestion

I value areas of tranquillity at the lake

Areas which a noise and commercial free will be very valuable.

Early mornings are a great time of tranquillity at the lake, the quiet before the rush of the day

Be good to have the Kawarau Arm closed to motorised vessels as there is plenty of opportunity elsewhere

It is bliss when you can only hear nature.

It might be good to have some areas like that so long as it doesn't interfere with the ability to use the lake. disagree. It is still usable despite siltation - a case of locating the main channel which alternates from side to side of the Arm

I value native plants and species around the lake

I value plants around the lake, not necessarily "native" plants

Visual amenity directly feeds into mental and emotional benefits the lake brings.

A range of plants is good. It is an artificial lake!

Plenty of neglected sites along the lake margins for reforestation. The work Mokihi is doing and what LDCT plan will enhance these areas and make them valued

I value spending time at the lake because it improves my mental wellbeing

The water park has been a great way to exercise and bring peace to the mind.

Being able to ski, biscuit, kayak, paddle board, swim and recently use the water park has been great, I've seen kids confidence grow over the summer by being able to tick off different obstacles they couldn't do times before.

Been on the lake or swimming in the lake is great for my mental health. Having dedicated spaces for just swimming or paddle boarding would be great.

The lake is so good for the soul.

Every day, this is why we live here.

Safe and quiet swimming and picnicking areas are most important to mental wellbeing and there are many people who would agree that the loss of the Lowburn Swimming Area to water park last summer was detrimental to the enjoyment of the lake by themselves and their families and friends.

The lake provides a different outlook every day - sometimes it is a mirror, sometimes it is a squall of norwester fury. The walking and cycle trails provide a way for all to enjoy its moods and get some exercise at the same time. Swimming in the lake is exquisite, as is sitting by the lake with good food and good friends. We need to take care of the lake and it will take care of us.

It's a beautiful lake that provides a range of recreational activities which contribute to wellbeing. This needs to be preserved now and for generations to come

I use it on a daily basis either for biking, walking, running and swimming

Couldn't agree more! We love the water park!

Whole heartedly agree. So amazing for my kids.

I value spending time at the lake because it improves my physical health

Our family use it daily for biking, walking, running, swimming and exploring 'wild areas' for the kids.

Being able to ski, biscuit, kayak, paddle board, swim and recently use the water park has been great, using both aerobic and strength to get around

Water park is a great full body work out I feel sore the next morning after going to the park with the fam but it's a good sore

More safe swimming zones are needed and designated swimming areas need to be made larger so that swimmers can actually have a reasonable workout in safety without going around in tiny circles or risking being hit by boats or jetskis. Lowburn Swimming Area needs to be reinstated where it was and extended to accommodate increasing use and popularity.

I would feel safer swimming in the lake if boats and jet skis were required to reduce speed near the swimming areas regardless if someone is actually in the water. It sometimes feels like it is unsafe to enter the water until the boats and jet skis are well away from the swimming area. If the boat and jetski drivers know that they cannot go fast near the swimming areas, they will get into the habit of slowing down just like they do when approaching boat-ramps.

Water park is a good cardiovascular workout

My friend and I enjoy this as its a great workout

I value the ability to freedom camp by the lake

We need more freedom camping sites in NZ, this is one of the mainstays of kiwi culture. Love that Lake Dunstan offers this.

Put the campers away from the lake and leave the lake shores for everyone to enjoy. Not just for campers, Campers can then travel to the lake shore like the locals have to.

I'm happy with freedom camping, but not right on the lake edge. It stops locals and families from accessing the lake, and I'd prefer to see the lake then 20 motor homes.

The current level of "freedom camping" is ideal - Lowburn, Champagne Gully etc. There is plenty of space for locals and day visitors.

I don't agree with freedom camping

Only in allocated spots

Needs to be managed and kept to allocated spots.

Should not be allowed, set up camp ground north of dog trial ground,

Hate freedom camping by the lake! Camping grounds are for campers

Freedom camping is a thing of the past unless large distances away from built up areas.

I value the clean water in the lake

A must have!!!

Essential.

So important As it can easily be lost.

Weed infested areas are not lovely to swim in. Most important to have good safe access to safe swimming areas with clean water.

That's a given surely. No compromise on this

What would we be without clean water

I value the commercial opportunities that the lake can hold

I love the Water Park and I believe that it adds a visual delirium to the lake.

The Water Park is Fantastic! I love going there with my friends in the summer, such a great business!!

Love the Kiwi Water Park on the Lake, Nice to have something fun and affordable to do on the lake!

Great to have activities like the Waterpark for kids entertainment and enjoyment and confidence in water skills, movable vendors travel to where the crowds are, there was always something to eat/drink at lowburn

I enjoy the water park being a part of Cromwell and hope that it can stay here.

The cycle trail and waterpark are good examples of the lake being used in commercial ways. There could be more things like that.

Community should be consulted where commercialisation is going to impact on public use and enjoyment of the lake.

I adore the water park

Water park is brilliant

Big yes to kiwi water park and other similar activities. Wouldn't want to see commercial fast food chains like KFC along the lake though

Kiwi water park was the highlight of my Grand children's stay with me over summer they can't wait to go again this summer.

I support commercial activities like the water park I enjoy outdoor activities

I like outside and fun activities for the family, the kiwi water park is great

I support The current businesses. Kiwi water park is run phenomenally the owners should be applauded creating such a fun popular activity

Commerce is fine but not at expense of recreational users. Prime areas should be protected.

All about balance

Providing temp structures and are paying rates and rent to be fair completion to existing businesses

As I said in previous comments the current businesses are loved by the community. (Kiwi water park & the coffee/ burger boats)

Commercial activities aren't a bad thing but do need to be paying their way with rates etc.

Kiwi water park is such a brilliant facility for central in the summer it brings so many people to the area. My B&B has had increased business due to the water park bringing people to town

I value the community that revolves around the lake

The lake is a beautiful resource on our doorstep and proper management planning is needed so it can be enjoyed and accessed by all of the community.

Towns based around a lake have great vibrancy

We used to own property right by the lake at Lowburn. Have seen many many changes...

The lake is a key element of Cromwell and with the Lake Trail adds to the appeal of the township.

A healthy, accessible lake usable for all is vital to the growth and happiness of any town fortunate enough to be beside it.

I value the family-friendly opportunities the lake provides

Nothing better than The Kiwi Water Park for the whole family to go have fun! Cromwell is so lucky to have it, looking forward to family time at that Water park again this summer.

The water Park is great for families together outdoors, having fun!

Me too! Wish there was somewhere nice to sit whilst I watch my grandkids on the park

This is one of the reasons my family lives in Cromwell. We enjoy boating, swimming and playing on the water park together as a family.

My entire family love going to the water park together

Agree

Love this about Cromwell so family friendly. Kiwi water park has been brilliant as well as it has brought families together to have fun

I value the open views of the landscape that the lake provides

The lake is part of the landscape as are the mountains. Very attractive vista and the access to the views is vital. There are parts of the lake margins, especially towards Lowburn that deserve overdue attention - a dam project left to wither.

I think this question may have arisen from a comment made by me and I was referring to open views of the lake, not necessarily the overall landscape. My point was that much as we need plantings in groups for beauty, shade and other reasons, I think it's important not to plant trees all around the shore so that views of the lake from the shore, passing cars, bikes, homes etc are not seriously obscured. When planning planting, thought could be given to this aspect because we all know how difficult it is to get rid of a mature tree even if down the track it's found to be in the wrong place.

Don't think that the lake provides a more open view of the landscape. Before it was there the view was more open.

I value the usable and accessible nature of the lake

The new trails have really opened up and increased use and enjoyment of the lake hugely.

It's very accessible if weed driftwood hinder my access to the lake.

More safe swimming areas for family recreation need to be provided. Not everyone can afford or have access to boats that can get to other parts of the lake. Loss of the Lowburn Swimming Area very short-sighted.

But also support the shade and beauty provided by trees along a large proportion of the shoreline

Love our lake

Agree

I value trails, tracks, picnic and parking areas by the lake

Would be great if they put some picnic area beside the water park also some shaded areas for spectators would be appreciated

As long as they are usable and not overrun with "freedom" campers

The new trails have really opened up and increased use and enjoyment of the lake hugely.

The north side of the lake needs heaps of attention, toilets mostly as there are a lot of boaties use this area and not a toilet in sight.

Better access needed on the eastern side of lake by Northburn. Boaties can access lots of areas but not everyone has boat access so more and better safe family swimming areas need to be designated, planned for and managed. Lowburn swimming area was a valuable picnic area for families especially over summer months in the past.

I value using the lake for motorised activities

I accept that the lake is fantastic for boating, but I love kayaking on the lake, and at times jet skis and jet boats whizzing around me are awful.

Great lake for boating.

Boating is popular on the lake but there need to be more clear zones for non motorised recreational activities including swimming and kayaking / paddleboarding etc.

Its time that acoustic regulations prevented motor noise in the natural environment. Keep the ICE to the racetrack.

With the changes to the lake perhaps the kawarau arm could be motor free from Bannockburn inlet to old Cromwell?

Disagree. It is still capable of use with care.

And dangerous...not obvious awareness of non motorised craft. Isn't this supposed to be the policing role of the ORC?

I value using the lake for passive activities

Swimming and bathing, walking, dog walking, picnicking with family etc. should be able to occur in safety without conflict of boats in some parts of the lake or fast-moving vehicles or even fast cycles on the lakeshore. I'm thinking of families parked along the shore with small children and the increasing use of cycle paths etc. there could be more conflicting users and proper management planning could address these risks.

Not sure what this means. In conflict with earlier statements and could be managed by areas

Walking, swimming, sitting - all important.

Long term success

A comprehensive plan for land-based weed and rabbit control, planting natives and biodiversity improvements has been implemented

This has to be managed in a coordinated way

"has been implemented"? Will be implemented? You are talking about the whole lake? Good luck!

A lead organisation was established and was responsible for implementing the community led master plan and policies for the lake

Oppose because you likely mean that you want it to be you. Lake Wakatipu and other important natural lakes don't have a lead organisation to manage them.

this is not necessary.

This Councils role

There are enough trusts/groups/council to do this already.

This is the councils job isn't it?

I'm in agreement with the majority of comments which note we already have enough organisations and creating another would be a waste of rate payers money.

Sounds a lot like a District Councils job description

Why a new organization ? Use an existing one like CODC

Not needed waste of rate payers money

Agree with the statement but whomever runs it has to have teeth and resources

As a rate payer there is enough organisations.

Not needed

Waste of time there I agree with everyone else who agrees this is the councils job!

Needs to be independent and transparent to public.

Isn't that the Lake Dunstan Charitable Trust?

One of the existing community trusts would be an appropriate entity to take responsibility

Who cares

Really don't know how to answer this, anything that happens to our community needs to be governed by community NOT some out of town council.

All of this is a waste of time unless we can get a lead organisation to see it through. As the LDCT is not funded by ratepayers for its work and has had the gumption to get started on the process, I think it would be a good contender. Most of the other parties have seriously dragged the chain over many years. The CODC, and our elected representatives have been notably silent on the issue of the lake, despite it being Cromwell's number one attraction. We need to tell them loud and clear that we expect more. Likewise with Contact Energy. We need a strong voice to get all the parties together, let them know what is desired/required by the people, and get them to contribute appropriately. Great things could yet be achieved!

This!!! Rates are high enough as is. We don't need another organisation

Proper planning and implementation is needed... nobody is taking responsibility

A marina with associated cafes, bars and water sports equipment rental has been built

Must be located in current areas of high use (i.e. Lowburn) and not scatter gunned in a willy nilly fashion. Is there any zoning in place currently? The multi agency ownership and oversight (LINZ, Contact, CODC) is a clumsy process.

Lake is too small for a Marina, but a large sheltered boat ramp with these facilities would be great

No marina, but the cafes, bars, water equipment would be great by a boat ramp.

I don't know about the marina but I would love to see some bars popping up.

I agree with Mr Lind on this one, regulation is needed here.

A plan has been agreed with the community and implemented to reduce the impact of silt, weed and driftwood in the Kawarau arm to an acceptable level

Depends on cost and if this is long term feasible.

The cost of this plan has to be borne by Contact Energy. Without that the Plan is toothless. It shouldn't fall on rate payers

This statement is a dream and I can't see it ever happening

Removal of all silt may not be feasible, but some management of it certainly is. Digging or dredging to enable use of the boat ramp and the OC jetty would be relatively small jobs if done regularly, in the meantime at least. I'd like to float the idea of a log boom (like the one behind the dam) near Richards Beach. This would catch much of

the driftwood before it came into the main bay. Wood could be channeled ashore for free firewood. This would keep the shoreline much clearer but not sure how this would work in a flood. Deepening the OC beach by pulling silt into the shore and retaining it would make an enticing swimming spot and a better grassy beach. The water level was higher this summer which was good for swimmers and visually.

This is a dream, although driftwood can and should be removed more often Management of channels may be feasible?

A plan for Contact and Linz to manage the forming silt beds and their establishment in natives before the exotics take over. Already the Raupo is doing well in many areas, but so should many other native riparian species. The high value amenity areas like in front of Old Cromwell need a long term plan to manage these and be made accountable.

A significant majority are proud of Lake Dunstan and locals regularly volunteer to improve it

Huge benefits to involving the community in it's improvements

Don't leave it all up to volunteers, that's a cop out. There should be council support for this.

An enviable network of bike trails and walking tracks exists around the lake

While recognising existing recreational users of the lakeshore who want areas to picnic, swim etc also horse riding trails well catered for (expect shared trails)

for safety - some parts should be one way - Cornish point to Clyde....

Damn right!

The trail network is not the only or most important feature of the lake.

Commercial development on or around the lake is controlled by community led planning policies

obscure question. What exactly is a community-led planning policy...odd.

Commercial development will only happen when businesses see there's money to be made. I doubt the community can control that.

There are already too many restrictions they need to be loosened.

Will require LINZ and Contact Energy to front up. Without those agencies coming to the fore it will not work.

They to frontend and be willing partners from the inception of the planning process.

www.growingsolutions.co.nz. New low impact crops were designed since 1989 local government reforms for all ages for the wasteland areas around Lake Dunstan. Community-led planning should begin at Dairy Creek for the Clyde Community plan, via the Vincent Community Board, as with the correct boundaries changes, after twenty years of waiting, the Vincent ward has both sides, Clyde end of Lake Dunstan. The CODC should review the 25-page Clyde Dairy Creek submission, 1989, and support the CODC plan, resolve all of the community issues and aspirations, due to the fragmented and unco- roles, of the different decision-making agencies..as mentioned by Mr. Glover News 19th May 2022. The Former NZED camp Clyde should be a base to start the process

Agree!

There was no community consultation about the Water Park and its moving into the Lowburn swimming area, hence decisions were made based unfairly on information provided by the applicant. There was no consideration given to the fact that hundreds of families were displaced from using the swimming area all summer for free, for a commercial activity that many could not afford to use more than once in a season. A more robust management and planning process with community consultation needs to be implemented

Contact Energy, Linz, Central Otago District Council and the Otago Regional Council all embraced the community vision and helped deliver it.

Unsure of this - I dont think the above have "Embraced" the vision - it seems like LDCT is pushing all development currently

As long as they actually support the community vision.

So? Will this deliver the clear plan and leadership and funding and teeth (enforcement)?

Good luck with that. Great ideal though! So 100% support in principle

Hasn't happened yet!

As a co-operative unit working together for a common cause, not as individual organizations

Wouldn't that be a marvellous thing! This should be a local govt election issue to get some people in high places who actually have an interest in our lake.

Need to work cooperatively and take responsibility - and with public consultation. Water Park was given consent by the 3 organisations with absolutely no public consultation.

Lake weed is managed to the satisfaction of Lake Dunstan stakeholders and is harvested as a sustainable resource

Subject to what this actually means

It's great in the compost bin!

If you compare Dunstan to a lake like Wanaka, its like comparing chalk and cheese. Wanaka is proactive, Dunstan is reactive and now look at the top end of the lake. Its like a warzone

Lake weed needs to be recognised as an important component of the lake ecosystem contributing to the lake's productivity as a habitat for fish and wildlife. Continue to manage the nuisance aspects in high recreational use areas

Again I'm not confident to answer this

It would be good to see it used in compost but I cant see this being financially viable

Weed in Lowburn Inlet was quite bad last summer and really affected swimming enjoyment later in the summer.

Native plant, bird and aquatic species are thriving in and around the lake

But with the retention of the existing beautiful and beneficial exotics.

And recognise the importance of a thriving trout fishery

Head of the lake could be a bird watching area, this has been suggested before

Right on! Thriving (clean water, air ,areas of tranquility, vegetation for wildlife) ecosystems means a great environment for all.

This would be the real indicator of success. Happy nature is the ultimate goal.

The area between Old Cromwell and Butchers drive has been re-purposed to provide a valued and vibrant area

Could consider an extension of shops located along the bottom of the hill on Butcher's Drive, with accompanying improvements to lake edge in front. Can we also give it a new name that has a nicer ring to it?!

This area is great but could be fantastic

Repurposed meaning the appearance and lake status restored.

That land is all flood prone so shops /building could not happen without building up the land significantly

Providing not for camping

No camping

No camping

The best spots for swimming have been kept for swimmers and enhanced with great shore-based facilities

Yes, the waterpark is a great example of such an enhancement. Because of the nature of the lake there are an enormous number of places for swimming in general.

Swimming spots are great, the use of the Waterpark at Lowburn was a great move, it has made it more sheltered from the weather and got more use out our season pass because less time was cancelled due to weather conditions

Waterpark takes up one of the best swimming spots for children, the park is an asset but needs to work in with the community and all the other lake users especially as it is a commercial operation.

Agree, keep the water park in its current spot it's the ideal spot for the water park

I agree with the majority of comments noting I support the water parks current location and want it to stay there long term as my family loves it

This! Very true. Would love to see some shade and seats installed by the water park for spectators though it would improve the area for when my parents come to watch their grand kids play on the water park.

Agree as I assume this means keeping that water park in its current spot as the water park is a swimming activity.

My family loves the water park

Keep the water park in its current spot it is the best spot for the water park. There are loads of other places people can swim.

I disagree. I love the water park and think the spot it is in is the best spot for it

Boats and jetski's need to be kept away from swimmers

Commercial entities should not take the best FREE swimming spots which everyone could previously access and if they do should be paying a significant amount for the privilege and giving back to the lake by enhancing the area themselves with plantings etc

Agree

Loss of the Lowburn swimming area to Water Park is huge oversight and has resulted in the loss of a recreational asset used previously by hundreds of families all summer for free. The location used by the park in the 2020-2021 summer was okay although road safety was always an issue, or else it could be further to the south of the Lowburn Swimming Area and closer to Cromwell. If the lake bed is too shallow there, then surely the appropriate consents can be approved to re-shape the lake bed to suit. After all it is an artificial lake. With proper planning the Water Park could be accommodated in a place with better and safer access, and the public can enjoy the former swimming area again. Boaties have other options for access to the lake.

So happy kiwi water park moved to its current spot my kids got to go so many more times this summer due to it being moved. Brilliant thinking by the water park team.

Agree the water park should stay in its current spot. The water park is a huge asset to Cromwell

Water park a great asset but not in current location, at the expense of lovely picnic and swim area. It is 1 of the few areas sheltered from summer winds and the swampy alternative is not attractive.

The freedom or paid camping areas around the lake are highly valued by both their users and the local community

There needs to be a camping ground established to replace the Top 10 and to hopefully reduce the number of freedom campers

I don't like freedom camping they leave too much rubbish

Camping grounds are not financially viable all year around, otherwise we would still have the Top 10. Freedom campers would never use it when it was operational unfortunately.

Freedom camping tends to dominate lake shore recreational areas with facilities and drives out other recreational users.

Freedom camping is highly valued by the users. People tend to forget many users are working on the harvests, they spend lots of money in the township and district and don't want (or need) the costly amenities provided by commercial campgrounds. If the sites are contained to the current number of sites there is plenty of other places DOMINATED by boat trailers and trucks.

Needs regulation. Honestly survey them. They love staying for nothing and move on to big towns for groceries etc

We need to start charging

No freedom camping

Don't allow Freedom camping - everyone should pay something towards the upkeep of these areas - not just local ratepayers

Freedom camping is a thing of the past.

No Freedom camping. Various sites could have different levels of facilities to suit different budgets eg. Family facilities like Top 10 down to basic sites but still user pays to support rubbish and bathrooms.

Don't need to provide freedom camping, but different levels of facilities for different budgets.

The lake and its margins are renowned for its cleanliness

We have a dump very close to the waste dump station! The camper vans and back packers should be using these! Why should ratepayers fund their disposal, the concrete rubbish bins around old Cromwell are constantly filled with travelers rubbish.

They should be disposing of their own rubbish, if bins are full they just add to it and it over flows, add more at who's cost?

The lake supports low impact, high value employment opportunities

Not sure what this means

Do you mean commercial operations?

Examples?

This is very vague

What do you expect to be able to control, longterm, things change

Agree

Comments associated with responses where votes have been excluded from rankings

A lead organisation was established and was responsible for implementing the community led master plan and policies for the lake

How would this be funded? I already feel stretched with the cost of living going up, high rates in central otago and more. This is the council's job to do this and I do not want my taxes/rates to go up to pay for an organisation like this. I oppose creating another organisation!

This is a waste of money we already pay high rates in Central and this is the council's job. Another organisation would be a complete waste of money and cause more issues

Is this not the councils job? Rates are high enough as is. Big NO for me. I oppose this. Who is going to pay for it?

Waste of money creating a new organisation. We already have CODC.

I agree. last thing we need is another organisation when we already pay enough rates for the council. I am with you. Surely the council can do this/already does. We are in a cost of living crisis I don't want my rates rising to pay for a new organisation.

amen.

Waste of money creating something new.

A plan has been agreed with the community and implemented to reduce the impact of silt, weed and driftwood in the Kawarau arm to an acceptable level

Driftwood is both a hazard and an asset as firewood for people in the community. By all means let's manage weed too because it creates issues in the health of the lake. Dredging silt? The Shotover is still bringing huge amounts down in to the Kawarau and then to us. There are some big costs and infrastructure involved trying to control a major water system like this.

A significant majority are proud of Lake Dunstan and locals regularly volunteer to improve it

Yes :)

There are other users and at times the bikers are in conflict with other them.

An enviable network of bike trails and walking tracks exists around the lake

I love the bike trail it's brilliant

Better management of camping areas and their facilities

There needs to be more bins around the camping areas as a lot of rubbish is left there.

Yes we need better management of the freedom camping area too much rubbish

All of the campers are annoying

Camper vans, caravans and all boaties charged.

Cleanliness of existing facilities

User payers - especially camper vans, caravans and boat users

Commercial development on or around the lake is controlled by community led planning policies

This again is the councils job. There are only two businesses on the lake. It's a complete waste of money to create and organisation to monitor just two companies when the council already does that. I would prefer money went to adding more rubbish bins, toilets and boat ramps.

don't know what this means.

Don't know what this means. There are only 2 businesses as you stated earlier. I'm happy with how the water park & food/ drink boats are run so are the large majority of people. There is no need to control these two businesses they are already controlled by the council and both are run well

The community spoke loud and clear in support of the water park when thousands came and used it regularly. Every time I drove past it was full of families having fun.

Commercialisation of the lake

I thoroughly support the two businesses on lake Dunstan (Water Park & coffee/ burger afloat) both are local family business which were innovative and took a chance to open during Covid. Both a widely supported by the community.

The Kiwi Water park is a choice addition to the lake my mokopuna have a lot of fun at the park. They want me to take them every time they stay with me in Alex. We need more fun facilities like this for our tamariki. Ka Pai to whoever it was that thought of starting a water park on the lake.

My kids love the water park and I love how there are so many Lifeguards to keep them safe so I can sit on the beach relax. Thousands more families use that spot now due to the water park.

My family love it, my kids can't get enough of it. They can't wait until summer to go back to the water park. They also went to the park with the college and youth group. We are so lucky to have the park in Cromwell.

Sheltered and quiet & away from cars? Kiwi water park is right beside a main highway. Nothing quiet/car free about their spot. As a long time Cromwell local I never saw anyone use that spot before kiwi water park went there.

The Kiwi Water Park has been hugely successful in Cromwell. The park is regularly used by local families and it also attracts tourists. Coffee afloat adds a much deserved coffee pit stop on the cycle trail I support both companies.

My Whanau has had some primo times at the water park. Really good clean fun for all

The kiwi waterpark is fun aswell as the bike trail

Kiwi Water Park is amazing. My family spent countless days there this summer. It is also encourages people to come and visit the area. My nieces and nephews visited us in Cromwell from Christchurch predominantly because they wanted to go to the Water Park.

The Kiwi Water park is an incredible asset to Central Otago. It creates so much joy for so many people. I absolutely love kiwi water park. So many laughs are had for all ages. I will definitely getting my entire family seasons passes this summer again. I live in Lowburn and I got my 3 boys seasons passes last season and they went nearly every day in summer

As a Lowburn local I wholeheartedly disagree with you. I got my kids off peak seasons passes and they went nearly every day in the summer holidays to the water park. I do not want to lose the park. Keep it in Lowburn.

I disagree. I think we are extremely lucky to have kiwi water park. Your comment is an example of tall poppy syndrome. Trying to tear down something thousands of people enjoy due to your jealousy. Very safe for you really.

Love the water park. Fun for the whole whanau.

My wee girl loves Kiwi Water parks new splash park for under 6's. I really appreciated how they listened to local Mum's like me who contacted them recommending they added an area for children too small for the main water park.

Not to be encouraged

Contact Energy, Linz, Central Otago District Council and the Otago Regional Council all embraced the community vision and helped deliver it.

What about Iwi?

If there was public consultation the public would side overwhelmingly with the water park park. Go down there on a warm day there are always large number of locals at the water park. Kiwi water park rocks

The public spoke on mass in favour of the water park. Thousands of locals use the park regularly.

I value an un-commercialised lake

Water Park is great. Would love to see more fun activities on the lake.

Oppose this. Commercial activities like the water park are an asset. My whanau loves the water park
Vague question. My kids adore the Water Park and we in general are big supporters of healthy fitness activities like the water park, bike trial etc. I would not like to see a fast food chains open along the lake though. coffee afloat being a local company is great.

I support the Water Park its great for Tamariki

I love the water park and would like to see more fun activities on the lake in future. Coffee Afloat is also brilliant.

The businesses on and around the lake are brilliant and I support them.

It's already commercial as it's man made. I have my fingers crossed the water park keeps expanding it's incredible

I value spending time at the lake because it improves my mental wellbeing

The water park on the lake has been great for my children. They don't enjoy a lot of traditional sports but they absolutely love the water park. It is brilliant exercise for them and great for their well being and has improved their confidence in water.

ditto. Great way of getting the kids away from screens in the school holidays. We love kiwi water park!

I agree. The park is so much fun and such a good workout.

I agree. Kids spend too much time on their phones these days. Water Park is a fun outdoor activity they can enjoy with friends and it's well supervised which is reassuring.

Absolutely. It was great having the park in Lowburn as it is so well supervised I could leave my 3 boys on the water park as they are all over 10 and feel confident they would be safe due to the large number of lifeguards

There are so many good work out opportunities around Lake Dunstan we are so lucky to live here. My family loves boating and the kids are keen water skiers. They also love the Kiwi Water Park.

I like walking and swimming in the lake and my mootua love the water park. They always sleep well after I take them there.

I enjoy running along the lake, I also enjoy the water park & stand up paddle boarding on a still sunny day.

Definitely. My family enjoys cycling on the lake, kayaking and using the water park. All great exercise.

Definitely. It's so hard to get my youngest boy away from his computer games. I feel so lucky the water park is in Lowburn as it gets the kids exercising in a fun way away from their screens

I value the commercial opportunities that the lake can hold

Kiwi water park has really helped put Cromwell on the map. I had many friends from outside the area visit so they could take their kids to the lake Dunstan to go on the water park. Such a great initiative
The water park specifically has been brilliant for the area. It has bought a lot of tourists to Cromwell which is great for the local economy.

Water Park is choice! I am going to buy my Mootua season passes next summer.

I love the water park and would love to see more water activities on the lake such as a wake park and water sports hire equipment. Cromwell could become a water sports mecca in NZ that would be great!

I Love the water park and coffee afloat was a nice touch when cycling along the lake. More actives and businesses like these two would be welcome.

Water Park is brilliant. NZ needs more things like this

Kiwi Water Park is brilliantly run. Lots of fun got the entire family

Kiwi Water Park has been superb for Cromwell. We are so lucky to have it here. My kids love it and would go every day if I let them.

Things such as the water park and food/drink boats are commercial operations that enhance the area for locals and visitors.

My kids are big water park fans. We bought them concession cards for Xmas.

As I said in past comments my family and I are regular users of the water park and I support fun activities like this

I value the community that revolves around the lake

I love living in Cromwell and bringing up my children here.

I value the family-friendly opportunities the lake provides

Water Park is great for the whole Whanau as Nana's like me have fun watching whilst the Tamariki and rangatahi have play on the park. I wish there was some shade there though I hate having to lug a wee tent for shelter all the way from the parking spot to the park on a hot day.

The water park has provided a great family friendly activity for the area. Over the school holidays my extended family came to the water park for the day and it was lovely seeing my kids and their cousins having so much fun on the water park together. Even us adults gave it a go and had a laugh.

My whole family loves spending time together at the water park

Water Park is a great example of this.

Definitely. I do wish there were more shaded and seating areas around the lake though. It would be nice especially so grand parents had somewhere to sit whilst their grandkids play on the water park.

Definitely value this highly. We have spent many summers at the lake boating and swimming. The water park has created another interactive way or my family to have fun at the lake.

More shade spaces would be helpful. Present Lowburn shoreline trees are stunted and don't offer good shade

Absolutely. So many family memories at the lake.

I value the usable and accessible nature of the lake

I think adding more accessible toilets and ramps would help make lake Dunstan more accessible to different abilities.

I value trails, tracks, picnic and parking areas by the lake

Definitely. I wish there were more picnic spots including BBQ's and picnic tables.

I value using the lake for motorised activities

My family has a boat and we love boating on the lake.

I love jet skiing on the lake. There needs to be more boat ramps though!

Love jet skiing

Increase boat access via a marina and more ramps

we need more boat ramps as population is increasing.

Yes please

Increase the quantity and quality of picnic areas

yes would love to see more picnic tables!

Native landscapes restoration

Natives are good! We should grow them because they are meant to be here. It doesn't matter if they're boring, our animals thrive on them!

Deciduous shade trees would be more suitable.

Noise Pollution around Lake

Lake is right by a road on both side. There will always be noise. This is unavoidable.

Agree

Provision of more pontoons

I live in Lowburn and very few used that spot before the water park opened you are talking nonsense. My kids used to jump off the barge by the boat ramp at the Lowburn harbour as the pontoon was always covered in bird poo

Rabbits and weeds

Rabbits are fine and the weeds are annoying

The best spots for swimming have been kept for swimmers and enhanced with great shore-based facilities

We need more public changing rooms and toilets around the lake the lake. I like the location of the water park it should stay in its current location long term.

Don't understand this comment thousands more children use this spot since the water park was installed. My Mootua love the water park and its in a great spot.

My children love the water park and use it regularly.

You are commenting the same thing on every question. We get it you don't like the water parks location. Get over it 99% of people love the water park and like the location.

Very misleading questions. What are the "best areas" where are they there should be a map showing exactly what you mean. Alpha street and McCully inlet have long been the most popular swimming spots. However there are hundreds of popular spots around the lake. I personally thing the spot the water park is in is perfect for the water park and it should stay there long term.

Swimming yes but great shore-based facilities detract from the asset. We need a swimming pool in the town and wild and peaceful places at the lake. Trying to turn the lake into a swimming pool would be a huge mistake and ruin the asset.

The effects and impacts associated with the siltation of the Kowarau arm

I like it because the water is deep because of the dam.

The freedom or paid camping areas around the lake are highly valued by both their users and the local community

\$5.00 per night for all camping areas beside the lake

The impacts of lake weed

The lake weed is annoying because your feet get tangled up.

The lake and its margins are renowned for its cleanliness

we need more skips around the lake freedom campers leave a lot of litter. some big skips where they camp would reduce this.

Charge for the use of the camping boating areas

The lake supports low impact, high value employment opportunities

Good jobs being available in future is important to me as I want my children to be able to stay in the area and access good jobs.

APPENDIX 4 – SURVEY RESPONSES IN DETAIL

Q1 What ONE word describes the biggest challenge Lake Dunstan is currently facing?

ANSWERED: 241

SKIPPED: 5

- | | | |
|---------------------------|--|--|
| 1. weed | 45. Weed | 83. Weed |
| 2. Weed | 46. Identity | 84. Silt |
| 3. rubbish | 47. Siltation | 85. Silt |
| 4. weed/ silt | 48. degradation | 86. Weed and shore line disgusting in old Cromwell |
| 5. Disaster | 49. accessible | 87. Silt |
| 6. weed | 50. Sand buildup in the Kawerau Arm which limits recreation activities | 88. Weed |
| 7. N/A | | 89. Weeds |
| 8. Seaweed | | 90. Sustainability |
| 9. N/A | | 91. Silt |
| 10. The lake weed | 51. Lakeweed | 92. Pollution |
| 11. Littering | 52. Weed | 93. Lakefront |
| 12. Lagarosiphon | 53. silting | 94. Weed |
| 13. weeds | 54. Weed | 95. Flow |
| 14. Weed | 55. weed | 96. Sediment build up down by town and country |
| 15. Lakeweed | 56. Neglected | 97. Sustainability |
| 16. weed | 57. Landscaping | 98. The non existent Main Street and the mall is just not working and killing the shopping scene that keeps interest in the town |
| 17. lakeweed | 58. Governance | 99. Silt |
| 18. rubbish | 59. apathy | 100. Weed |
| 19. Lake weed | 60. Weed | 101. Weeds |
| 20. Lake weed | 61. Overcrowding | 102. Ecosystem |
| 21. toxic slime | 62. Access | 103. Lagrosiphon and silt. |
| 22. Lake weed | 63. Weed infestation | 104. Silt |
| 23. Silt | 64. Neglected | 105. Weed |
| 24. sandy | 65. overcrowding | 106. Silting |
| 25. Weed | 66. Older | 107. Silt, Lake weed |
| 26. Weed | 67. Sediment | 108. The lake weed |
| 27. Rubbish algi | 68. Shoreline | 109. Sediment! |
| 28. its not clear | 69. Commercialisation | 110. Sediment |
| 29. Lake weed | 70. Silt | 111. Silt |
| 30. Lake weed | 71. Longevity as a recreational place | 112. Overgrown |
| 31. weed killers | | 113. Silt |
| 32. pollution | 72. Silt | 114. Silt |
| 33. silt | 73. Cromwell | 115. Maintenance |
| 34. algi | 74. Weed | 116. Weed |
| 35. lake weed? | 75. Shoreline | 117. Weed |
| 36. weed | 76. Silt | 118. Weed |
| 37. Weed | 77. Sediment and weed | |
| 38. Lake weed | 78. Neglect | |
| 39. lake weed | 79. Lagarosiphon | |
| 40. weed | 80. Everyone being able to enjoy it whilst maintaining its beauty | |
| 41. weed and silt | | |
| 42. Families | | |
| 43. Councils | 81. Silt | |
| 44. Toxication from weeds | 82. Silt | |

- 119. weed
- 120. Weed
- 121. Silt
- 122. Biodiversity Loss
- 123. Weed and silting kawaru arm
- 124. Contamination
- 125. Silt
- 126. Silt
- 127. human development
- 128. Silting
- 129. Ownership
- 130. Weed
- 131. Weed
- 132. silting
- 133. Lagarosyphon
- 134. siltation
- 135. Inaction
- 136. Sedimentation
- 137. Weed
- 138. Development
- 139. "Siltation" of both upper lake arms
- 140. People.
- 141. Underfunded
- 142. Accessibility
- 143. Weed
- 144. Degradation
- 145. Sustainable
- 146. silt
- 147. Silt
- 148. Weed
- 149. Silt
- 150. Lagarosiphon!
- 151. Silt
- 152. Weed
- 153. Silt
- 154. Driftwood
- 155. weed
- 156. Weed
- 157. Weeds
- 158. Weeds
- 159. Siltation
- 160. Lack of ownership from all of the communities in the district
- 161. Creating more suitable public access/use opportunities
- 162. Clarity
- 163. Humans
- 164. Speedboats
- 165. Silt
- 166. Weed
- 167. Silt
- 168. Grazing
- 169. vehicles
- 170. Usability
- 171. Siltation
- 172. Usage
- 173. Weed
- 174. Appearance
- 175. Sediment
- 176. neglect
- 177. pollution
- 178. Silt
- 179. in-cohesive
- 180. Envasive weeds
- 181. Neglect
- 182. Lake weed
- 183. Accessibility
- 184. Accountability
- 185. Unutilised
- 186. Weeds
- 187. Weed
- 188. Silt
- 189. Under-developmebt
- 190. The sediment down the Old Cromwell arm
- 191. Stagnation
- 192. Weed
- 193. too much weed in lake
- 194. water park is in the wrong spot
- 195. maintenance
- 196. Lake weed
- 197. Management
- 198. Biodiversity
- 199. Weed and silt
- 200. Evolvment
- 201. Lake weed
- 202. Access
- 203. SILT
- 204. Losing its use as a recreational Lake
- 205. Silting of the Kawara River/Queenstown end of the lake accessibility
- 206. Lake weed and uneducated boats on boating rules
- 207. Climate change
- 208. silt
- 209. Silt
- 210. Housing/Accomodation
- 211. Silt
- 212. Silt
- 213. Weed
- 214. Planning
- 215. Silt, weed and water quality
- 216. Silt
- 217. Ambivalence
- 218. Tourists
- 219. Lack
- 220. Access
- 221. silt
- 222. Silt
- 223. Sediment
- 224. Weed
- 225. tourism
- 226. Silt
- 227. Growth
- 228. weed
- 229. popularity
- 230. devegetation
- 231. Drought
- 232. weed
- 233. wind
- 234. covid
- 235. weed
- 236. didymo
- 237. weed
- 238. weed
- 239. development
- 240. pollution
- 241. lake

Q2 What ONE word describes "success" for Lake Dunstan in the future? (think 30+years!).

ANSWERED: 241

SKIPPED: 5

-
- | | | |
|--|--|--|
| 1. water | 46. unpolluted | 87. Swimmable |
| 2. Water | 47. productive | 88. Management |
| 3. cleanliness | 48. Sustainable.... | 89. Useable |
| 4. weed and silt gone | 49. Sustainability | 90. Clean |
| 5. Opportunity | 50. Beaches | 91. Community |
| 6. clean | 51. Dredging | 92. Money-people weedmat |
| 7. Clean | 52. Clean | 93. Flow |
| 8. Repairing | 53. access | 94. Clean water |
| 9. Clean | 54. Vision | 95. Generational |
| 10. To have no more lake weed | 55. Pollution free | 96. Outdoors |
| 11. cleanliness | 56. Accessibility | 97. Pristine |
| 12. Clean | 57. usability | 98. Access |
| 13. weedkiller | 58. Clean | 99. A clean lake for swimming |
| 14. No weed | 59. Planning | 100. Healthy |
| 15. Noweed | 60. Access | 101. Decrease in weed because of weed spray |
| 16. clean | 61. Keeping our precious lake clean not green with weed | 102. Fresh |
| 17. conservation | 62. Maintained | 103. Pristine |
| 18. cleanliness | 63. Cleanliness | 104. Planning |
| 19. not sure | 64. Fresh water | 105. Usable |
| 20. Constant work towards making Cromwell a better place | 65. Kawarau | 106. Sustainableity |
| 21. Kiwi water park | 66. accessibility | 107. Sustainability |
| 22. Clean | 67. Clean | 108. management |
| 23. lots of boat go on it | 68. Clutha arm | 109. Access |
| 24. To keep it Clean | 69. Sustainability | 110. Access |
| 25. Clean | 70. Functional | 111. Asset |
| 26. Clean | 71. Taonga | 112. Sustainability |
| 27. boating attraction | 72. Still being lake | 113. Pure |
| 28. Clean | 73. My grandchildren being able to to take their children to the lake for recreational activities in swimming, boating, skiing and picnicing | 114. Clean |
| 29. alot of water | 74. Beautiful | 115. Clean |
| 30. nonpolluting | 75. Clean | 116. Water |
| 31. a riva | 76. Biodiversity | 117. Beauty |
| 32. clean | 77. Accessibility | 118. Recreation |
| 33. clean | 78. Clean | 119. Wetland Protection |
| 34. Clean | 79. Amenities | 120. Accessibility |
| 35. I dont know | 80. Silt mitigation | 121. User-friendly |
| 36. No lake weed, no rubbish, | 81. Weedless | 122. clean |
| 37. no sharp rocks | 82. Clean | 123. Family |
| 38. development | 83. Accountability | 124. clean water, that you can swim/fish in. |
| 39. unpolluted | 84. Action | 125. Clean |
| 40. Shade | 85. Clearing | 126. Guardianship |
| 41. pristine | 86. Clean | 127. Clear |
| 42. Purification | | 128. Clean |
| 43. Usage | | 129. clean |
| 44. Recreation | | 130. Destination |
| 45. Recreation | | 131. pristine |
| | | 132. People |

133.Trucking out dredged silt	169.Natural	206.loved
134.Accessibility	170.Management	207.Thriving
135.Biodiversity	171.Fish	208.Lifestyle
136.“Stabilise” of the kawarua headwater, erosion!!!	172.Appearance	209.Recreation
137.-splash-	173.Diversity	210.Clean
138.Amenities	174.regeneration	211.Usable
139.Pristine	175.healthy	212.Planning
140.Pristine environment	176.Flow	213.Peaceful
141.Pristine	177.care	214.Clean Lake
142.Diversity	178.Resilience	215.Direction
143.Natural	179.USABLE	216.Including
144.Beauty	180.Pristine	217.Buzzing
145.Beautiful	181.Accessibility	218.Commercial
146.Dredged	182.Protection	219.water
147.Pristine	183.Tourism	220.Boating
148.Action	184.Biodiversity	221.Clean
149.Recreation	185.Pristine	222.Control of weed by the various agency's involved
150.Weedless	186.Access	223.sustainable
151.Cleaning	187.Beautification	224.Beauty
152.Landscaping	188.Proud	225.Available
153.Removing the silt	189.Swimable!!	226.plantings
154.Healthy	190.Appearance	227.accessibility
155.Activities	191.less weed in lake	228.natural
156.Destination	192.no scrub where we want to sit	229.advertisement
157.Ownership	193.activation	230.unchanged
158.Increasing and suitable public recreational access	194.Weed reduction	231.water
159.Accessibility	195.Investment	232.employment
160.Clean	196.Biodiversity	233.community
161.Biodiversity	197.Clean	234.facilities
162.Sanctuary	198.Sustainable	235.clean
163.No silt	199.Clean water	236.clean
164.Pristine waters	200.Clean	237.people
165.Clean	201.USABLE	238.beauty
166.Native	202.Useable	239.continuity
167.habitat	203.Accessible	240.lake
168.Pristine	204.Clean water	241.nice
	205.Resilience	

Q3 What are the three things or aspects that you value most about the Lake Dunstan area/community?

ANSWERED: 242 SKIPPED: 4

FIRST CHOICE

1. Duckshooting
2. The ability to swim in it
3. depth
4. swimming to cool down
5. nature walks
6. The water
7. Jobs
8. Water
9. The lake ofc
10. the animals
11. How open the lake is to the public
12. water
13. Water park
14. The lake
15. swimming
16. its free
17. Boating
18. Swimming
19. swimming
20. Nice in summer
21. All the pontoons in the water because they are really fun to jump of
22. lots of fun
23. Nice swimming spots
24. Clean water
25. Swimming
26. boating
27. Nice places to swim
28. Water
29. cromwell
30. the concrete warf
31. the wora park
32. good in summer
33. clean water
34. People
35. All of The walfs
36. Good swimming spots
37. water
38. access to the lake
39. Clean water
40. Swimming
41. untouched nature - birds, mountains, insects
42. Clean Lake - waterways
43. Clean water to swim in
44. Accessibility
45. Lifestyle- love the lifestyle it provides- swimming, boating, picnicking
46. Ease of access
47. being able to be immersed in nature
48. trout fishery
49. a multitude of recreational activities
50. Lakeside tracks
51. Cleanliness
52. Potential for a lovely water sports area
53. Stunning Views
54. water sport
55. Easy access to Lake
56. Accessibility
57. Swimming
58. community spirit
59. Assesibility
60. Accessibility
61. Boat ramp
62. Beauty of our environment
63. That it is a community with different opinions.
64. clean water
65. Clean water
66. Old Cromwell town
67. Access
68. Freedom to go were we want
69. Tourism potential
70. Beauty of the surrounding area. Accessibility. Cleanliness
71. Beautiful
72. That it connects the district
73. Recreation
74. Boating access
75. Leisure activities
76. Access to lake
77. Bike and walking paths
78. Walking/cycling tracks
79. Beautiful landscapes
80. Safe swimming and boating
81. Locality
82. Swimming
83. It stays clean and healthy
84. Proximity of lake to the townships
85. Boating
86. Swimming in the lake
87. Swimming lake
88. Clean, safe water to enjoy recreationally
89. People
90. Accessibility
91. Clean water
92. Can swim in the lake but need swim lane
93. Cleaness
94. Use of the lake recreational
95. Clean water
96. Access
97. Community orientated - free family events
98. The walking track from McNulty to bridge
99. Swimming
100. Cleaniness
101. Accessible to all
102. Boating
103. Clean water to swim in
104. A clean lake
105. Access
106. Boating
107. Boating
108. Clean water for swimming
109. the beautiful scenery
110. Access - you can just head down to the lake and access almost all of it !

- 111.Clean water
- 112.Boating
- 113.Beautiful swimming beaches
- 114.Swimming
- 115.The lake
- 116.Concrete wharf
- 117.Having somewhere to swim
- 118.Many recreational locations
- 119.Accessibility to water activities
- 120.It's a great public space.
- 121.Fishing
- 122.Stunning geography
- 123.Landscape
- 124.Lake access
- 125.sense of rural community
- 126.Clear lake water
- 127.Beauty of the lake from the highways.
- 128.Ability to use the lake for recreational activities
- 129.Cycleways
- 130.water sports
- 131.It is a regular NZ family Community town and district.
- 132.visually attractive
- 133.Accessibility
- 134.Fishing
- 135.Inclusion
- 136.Peace and quiet (other than peak summer)
- 137.Purity of water
- 138.Memories of what lies below.
- 139.Accessability to the outdoors
- 140.Fresh clean water
- 141.Clean water
- 142.Ready access to the outdoors/nature
- 143.All users to be treated equally
- 144.easy lake access
- 145.Old Cromwell
- 146.Accessibility
- 147.Picturesque
- 148.Amenity value
- 149.Keeping it a lake not a braided river
- 150.Recreation
- 151.Recreation
- 152.Old Cromwell
- 153.Recreation
- 154.Views
- 155.Recreation
- 156.Boating
- 157.Ease of access
- 158.Bendigo wetlands
- 159.Beauty of Lake and Mountains
- 160.Accessibility
- 161.Limited foreshore development.
- 162.Clean water
- 163.The Quietness
- 164.Access
- 165.Fishing
- 166.Clean water
- 167.Natural beauty of the area
- 168.Access
- 169.Ease of access
- 170.Non-commercialisation
- 171.Fish
- 172.Appearance
- 173.Duck shooting
- 174.space to enjoy the quiet
- 175.the geography
- 176.The Lake
- 177.natural amenity value
- 178.Clean water
- 179.Ability to use the lake for water sports
- 180.Natural beauty of the area
- 181.Accessibility for family/ friends
- 182.Access to all
- 183.Safe
- 184.Potential for greater biodiversity. We have the choice to get it right
- 185.The slower Pace
- 186.Access
- 187.Bike and walking trail
- 188.Water cleanliness and ability to use most areas of the water
- 189.Swimming with my son
- 190.Alpha Street lake front
- 191.swimmable
- 192.can walk to the lake - its close to where we live
- 193.a family lake
- 194.Accessibility
- 195.Community use
- 196.Access to the outdoors
- 197.The lake
- 198.Outdoor opportunities on the trails, tracks and lake.
- 199.Natural beauty
- 200.Accessible
- 201.Boating
- 202.Lake
- 203.Looking out for neighbour's and friends - a caring and welcoming community
- 204.Beauty of lake and surrounds
- 205.Bendigo wetlands
- 206.weather and light
- 207.Kiwi water park
- 208.Easy way of life
- 209.Watersports
- 210.Proximity
- 211.Nice lake with good access
- 212.Lifestyle
- 213.Proximity to lake
- 214.Swimming in our Lake
- 215.great community
- 216.Bike/walking Track
- 217.Clean
- 218.Boat access
- 219.easily accessible
- 220.Swimming
- 221.Swimming
- 222.Scenic beauty
- 223.fresh clean water
- 224.Lake
- 225.Clean
- 226.weather
- 227.accessibility
- 228.freedom camping
- 229.beauty
- 230.cycling
- 231.summer weather
- 232.weather
- 233.lake
- 234.camping
- 235.weather
- 236.trees
- 237.natural beauty
- 238.boating
- 239.lake
- 240.beautiful
- 241.open lake front

SECOND CHOICE

1. SECOND CHOICE
2. Fishing
3. That we can fish
4. coldness
5. meeting up with friends
6. The Urgency to keep it clean
7. water park
8. N/A
9. The Lake
10. N/A
11. The old Cromwell shops
12. the plants
13. Being able to swim freely
14. rocks
15. Boating
16. The sports fields
17. picnic benches
18. its cold
19. swimming
20. Boating
21. fishing
22. Refreshing
23. The lake just in general it is really nice
24. blue
25. There are areas to launch your boat
26. Access
27. Boating
28. Good fishing
29. People
30. clutfa river
31. hanging out with friends
32. the smwwing
33. boating
34. lots of places
35. Water
36. The water park
37. Boating and watersports
38. swim
39. clean water
40. Good boat ramps
41. Shade from trees
42. access for swimmers & boating
43. Fishing - can't due to over grown weeds
44. Walking access
45. Water quality
46. Pristine- love that it is a clean lake we can enjoy- minus the weed!
47. Harbourmaster that works with lake users
48. fishing
49. lake shore access
50. irrigation for viticulture/orchards
51. Natives restoration
52. Boat ramps
53. How it looks when you are driving past
54. swimming
55. Bike / walking tracks
56. Lakeshore vegetation
57. Boating
58. love and use of the outdoors
59. Safe boat ramps
60. Choice of activities
61. Water park
62. Caring community
63. The lake. We have a great asset that is simply not being capitalised on.
64. areas to swim safely for me and my children
65. Lack of pollution
66. Boating Fishing
67. Water Quality
68. Clean swimming water
69. Employment value
70. Multipurpose
71. That it sparkles
72. Water source
73. Old Cromwell
74. Happy community
75. Clean water
76. public access to lake
77. Climate
78. Great people
79. Brings tourists and their dollars to the area
80. Beauty
81. Access for everyone
82. Plentiful boat ramps
83. Fishing
84. Sitting in shade beside the lake
85. Safe
86. Restoration for local wildlife habitats and plants
87. Climate
88. Choice of places
89. Watersports
90. Family use friendly
91. Accessibility
92. Lake access
93. Clean
94. The lake
95. Boating
96. Access to it
97. Natural landscape look (yes I know it's a man-made lake but it's beautiful and just ignore the giant plastic water park).
98. Swimming
99. Good spots to enjoy the lake - lakeside
100. Bike track
101. Water cleanlinesses
102. Swimming
103. Swimming
104. Leisure activities like fishing and boating
105. The small town feel
106. Safe
107. Safe swimming zones
108. Cycle trails
109. Lots of shade
110. Recreation
111. The weather
112. Boating
113. A place for boating
114. Cycle/walking track
115. Community utilisation
116. There is remnant native biodiversity up some surrounding gullies
117. Scenery
118. Genuinely friendly community
119. tourists
120. Biking trails
121. peaceful
122. Small town feel
123. Accessibility to lots of different areas.
124. Beautiful scenery
125. Lake usage
126. good lake access
127. Lake Dunstan has such easy access at multiple points.
128. clean, pure water
129. Serenity
130. Boating

- 131. Closeness to the lake
- 132. Easy access to nature and the lake
- 133. Weed and silt free
- 134. Water.
- 135. Increasing variety of outdoor options
- 136. Accessible to everyone to use and enjoy
- 137. Safe swimming areas
- 138. Uncrowded, there's room to share
- 139. The lake and its bed to be sustainable for all users
- 140. I love the trees to sit under on the shore - needs more and grass/ or similar to sit on
- 141. Usable lake in old Cromwell
- 142. Clean
- 143. Clear water
- 144. Safe for swimming (water quality)
- 145. Clean water and no weed
- 146. Activities
- 147. Fishing
- 148. Boat ramps
- 149. Access
- 150. Clean water
- 151. Swimming
- 152. Harbourmaster that works with lake users
- 153. Communities and villages along lake frontage
- 154. Easy access
- 155. Water quality
- 156. Track
- 157. Clean air
- 158. Untouched Environment
- 159. Quality
- 160. Easy boat access
- 161. Lakeshore amenities
- 162. local habitat
- 163. Nature
- 164. recreation
- 165. Purity
- 166. Big fish
- 167. Amenities
- 168. Fishing
- 169. cleanliness of the water - as far as we know.
- 170. the people
- 171. Biking
- 172. unique flora and fauna
- 173. Access to the water
- 174. Ready accessibility of the lake
- 175. Good for swimming in summer - however too many noisy boats.
- 176. Accessibility for walking your dog
- 177. Good facilities
- 178. Various swimming areas
- 179. Newly established stands of native plants
- 180. The Uncrowded areas
- 181. Space to explore
- 182. Old Cromwell lake front
- 183. The lake amenities such as the pontoon, wharfs etc
- 184. Water sports
- 185. Old Cromwell
- 186. cycle trail by lake
- 187. swimming, kayaking on the lake in some areas
- 188. difference choices of places to go
- 189. Natural landscapes
- 190. Dunstan trail
- 191. Walking/Cycle Trail
- 192. Surrounding scenery
- 193. Landscape
- 194. Able to access water by boat ramp or lake edge for all activities
- 195. Un taped potential
- 196. Swimming
- 197. Climate
- 198. Easy to get around- the greenways are great - new developments need to include them in their planning
- 199. Fish in the lake
- 200. Recreation
- 201. friendly community
- 202. Clean water
- 203. Towns pretty easy to get around and to
- 204. Biking
- 205. Vastness
- 206. Great family day out
- 207. Tourists/visitors
- 208. Swimming
- 209. Tracks and Shaded Areas to enjoy the Lake
- 210. growing/development
- 211. Clean areas
- 212. Safe
- 213. Fishing
- 214. clean water
- 215. Boating
- 216. Visual amenity
- 217. Leisure activities
- 218. ability to swim and boat easily
- 219. Wineries
- 220. Clear
- 221. lake access
- 222. freedom camping services
- 223. beauty
- 224. respectful people
- 225. camping areas
- 226. work
- 227. relaxed
- 228. surroundings
- 229. it's not like queenstown
- 230. environment
- 231. dump station
- 232. open space
- 233. swimming
- 234. views
- 235. clean

THRID CHOICE

1. swimming
2. The fact that we have pontoons and wharfs
3. clean areas to swim and boat
4. boating
5. Fun activities
6. swiming
7. N/A
8. Fruit
9. N/A
10. The view
11. the water quality
12. Feeling safe in the lake
13. tracks
14. Swimming
15. People
16. swimming pontuns
17. its big
18. fishing
19. Lake days
20. Good fishing
21. The swim zone bits for people to swim in without having to worry about the boats
22. idk
23. Having fun facilities to use (Waterpark)
24. facilities
25. Fishing
26. Balanced ecosystem
27. Fun
28. the dam
29. meeting new people
30. waterpark
31. safe swimming spots
32. Beach
33. cold
34. visual amenity
35. Multiple tidy beaches with shade
36. Pontoons
37. active people in community, young to old age groups are involved & proud of the area
38. Lake & surrounding areas available for all the community to use
39. Great cafes
40. Fishing
41. Gathering space- it has places we can gather and enjoy the lake together
42. Harmonious co existence between lake users/activities
43. photographic opportunities
44. wildlife
45. wide open spaces
46. Swimming areas
47. Free
48. Lovely place to relax
49. fishing
50. Old Cromwell precinct
51. Closeness to facilities
52. Views
53. clarity of the environment
54. Pontoons
55. Open spaces
56. Fishing
57. Progressive attitudes
58. The mix of cultures that make up the region.
59. the fact you can have fun and be away from others usually have space..
60. Adequate control of all weeds
61. Bike Track
62. Wild life
63. Access
64. Facilities
65. Family orientated
66. That it is on the doorstep
67. Views
68. Cycle trail
69. Easy living
70. No commercial or private activity
71. Native plantings
72. Accessability to foreshore
73. A great place to live
74. Promotes Cromwell
75. Activity
76. Lakeside camping
77. Cafes/eatreys
78. Fresh fruit in the summer
79. Community feel
80. Accessibility
81. Lifestyle
82. Having the cycle trail running along the lake
83. Free flowing water
84. Cleanliness
85. Bike tracks beside
86. Sheltered swimming spots
87. Safe
88. The outdoors- trail rides and walks
89. Walking round it
90. Safety
91. Swimable water, multiuser for people who swim, Kayak, boat etc.
92. Fishing
93. Good access for boaties and recreation users
94. Good restaurants
95. Vision
96. Gatherings
97. Fishing
98. The lake track to enjoy the views
99. Old Cromwell Precinct
100. Pontoons!
101. Open space for boating
102. Old Cromwell
103. Safe for children
104. Visual Apperance
105. The sport
106. Bike track
107. Outdoor living
108. Good accessibility
109. Appealing appearance of lake and lakefront trees
110. There are a few public toilets lessening human waste.
111. Activities for everyone
112. Open spaces / hikes and trails
113. Beautiful
114. Small community
115. close to nature
116. Lake amenities

- 117.How clever we all are by choosing to live here!
- 118.Cycle trail
- 119.Fauna
- 120.small town
- 121.We are in the middle of everywhere.
- 122.ever-changing
- 123.Beauty
- 124.Climate stabiliser
- 125.Diversity of users
- 126.Little development
- 127.Lack of commercial lake use
- 128.A focal point.
- 129.Small community
- 130.Bendigo Wetlands Area
- 131.Family friendly
- 132.Supports a range of leisure activities
- 133.Not (yet) overcrowded
- 134.beauty of the clear water
- 135.Community
- 136.Water sports
- 137.Visual attraction
- 138.More suitable swimming areas away from boats, Waterpark, etc. etc.
- 139.Boating
- 140.Access for Elderly in cars
- 141.Recreation area
- 142.Trees
- 143.Easy Access
- 144.Fishing
- 145.Importance of water in the wider central otago desert
- 146.Water quality
- 147.Onshore amenity
- 148.Consistent water level
- 149.Space
- 150.The remote feeling/lack of buildings
- 151.Wildlife
- 152.Easy side of lake access
- 153.Native plantings
- 154.controlled access
- 155.Communal
- 156.natural values
- 157.Keeping it simple
- 158.Bigger fish
- 159.Swimming
- 160.pleasure received from the environment
- 161.the mix of amenities and activities
- 162.Schooling
- 163.re-awakening of pre-european values and taonga
- 164.Not too many people
- 165.Views of the water
- 166.Happy family picnics
- 167.Freedom to enjoy the lake without adverse restrictions as it was intended
- 168.Bike trail
- 169.Mohiki trust
- 170.Free family fun for everyone to Rae joy
- 171.Coffee afloat
- 172.Reserves
- 173.Lake accessibility
- 174.Admiring the beautiful scenery- seasonal changes
- 175.Lowburn Inlet
- 176.clean
- 177.like seeing birds
- 178.striving for a healthy environment
- 179.Greenway and bike/walking trails
- 180.Heritage precinct
- 181.Climate
- 182.Less people and traffic compared to Wanaka and Qtown
- 183.Friendly and active outdoor community
- 184.Fun activities on the lake
- 185.Close to town
- 186.Admiring the Kawarau arm
- 187.Facilities
- 188.Lots of clubs and activities for people to join
- 189.Safe swimming areas away from boat traffic
- 190.Beautiful scenery
- 191.outdoor opportunities
- 192.Boating
- 193.Safe
- 194.Fishing
- 195.Picturesque
- 196.The lake is good for mental health and well-being
- 197.Recreation
- 198.Clear clean sparkling water with a clear and clean bottom
- 199.Healthy Water
- 200.great recreation amenities
- 201.Family Friendly
- 202.Potential
- 203.Public ammenities
- 204.not over crowded
- 205.Picnic
- 206.Fishing
- 207.Community identity
- 208.limited noise or overlooking by development
- 209.Scenery
- 210.Available
- 211.business hub
- 212.cycle track
- 213.swimming
- 214.freedom camping
- 215.the town
- 216.free camping areas
- 217.freindly
- 218.freindly
- 219.dust supression at Lowburn camp
- 220.scenic views
- 221.camping
- 222.people
- 223.open lake front

Q4 What are the three "things" that don't currently exist that you would like to see in the Lake Dunstan area in the future? These could be physical, environmental, community, amenity etc

ANSWERED: 234 SKIPPED: 12

FIRST CHOICE

- | | | |
|---|--|---|
| 1. more water | 23. The Lake to be more clean and clear | 44. environmental protection |
| 2. No Pollution | 24. Cleaner pears and warfs | 45. Lake shore management to preserve a range of recreational opportunities |
| 3. areas around the lake that have trees and not prickly bushes | 25. boating | 46. MANAGEMENT of silt build up to enable continued activities such as fishing, boating, swimming, irrigation |
| 4. Fun water related thing all around the lake | 26. A few more pontoons | 47. Much more restricted car access to the lakeside |
| 5. a slide | 27. More areas to chill | 48. Decent beaches at Clyde end |
| 6. N/A | 28. a park for biscking | 49. Water playground |
| 7. Dominos Pizza | 29. trash bins | 50. Create more hospitable places to be by the lake |
| 8. N/A | 30. lake swig | 51. safe desirable swim area |
| 9. The lake weed gone | 31. no litter | 52. Improve retail shopping |
| 10. a safe space for ducks where dogs can't get them | 32. Cleannesses | 53. Board walks at Old Cromwell |
| 11. Have more toilets around the lake | 33. All the lake weed gone | 54. Beaches |
| 12. better pontoons | 34. idk | 55. shade |
| 13. More ponetons forthere out from shore like the lowburn onw | 35. development around mcnultys inlet | 56. More pontoons |
| 14. ???? | 36. Access to the lake edge that don't require a four wheel drive to negotiate the ruts and holes. | 57. More control of people who walk dogs and don't pick up after them! |
| 15. more swimming pontuns | 37. Shops | 58. More commercial use of lake |
| 16. things to hire (e.g paddle boards, kayaks) | 38. sort out Lowburn car park area: water park, camping, boats, swimming etc | 59. The NEW hall appropriate for visiting musos and other arts fields |
| 17. more rubbish bins | 39. Removal of Toxic weeds | 60. A lake shore that is maintained to allow access for users. This not only generates places for |
| 18. more water packs | 40. Areas excluding people, dogs and boat beaching for the native birds, with native planting | |
| 19. Pontoons | 41. Lakeside Commercial activity | |
| 20. No lake weed | 42. More seating, picnic areas, bbqs | |
| 21. A little island sort of sandy bit in the middle of the water and there is a boat that will drive you over | 43. Effective silt and weed management plan for the lake | |
| 22. not sure its already good | | |

- community to utilize, but actually adds a sense of pride for the community
61. the camping zone needs to be moved over away from the shore line and boat ramps etc.. some times you cannot get near the lake side as campervans have set up there homes for there views.. you feel like you are sitting in there lounge,, im local and this is not fair
 62. A practical an sustainable plan
 63. More Green space for families
 64. Swim only Zone
 65. More swimming only areas
 66. Lakeside hotels lodges
 67. Silt
 68. Better recycling facilities
 69. Better utilisation of the foreshore
 70. More public facilities eg toilets
 71. Clean up of silt and flotsam in the Karawau arm by Old Cromwell
 72. Environmental awareness
 73. Family recreation areas and amenities
 74. Connecting lakeside bike and walking paths safely with town
 75. More designated swimming areas
 76. Updated seating
 77. Dredging of the silt build up
 78. More planting
 79. Bouy line for swimmers
 80. Swimming lanes
 81. Gravel (not boulder) beaches south of the confluence
 82. weed free
 83. Better and more toilets
 84. More pontoons in the lake for kids in swimming areas
 85. Lakeside cafe/bar/restaurant
 86. More amenities. Toilets etc
 87. More trees around the lakes edge for shade
 88. No freedom camping around lake
 89. Swim lane
 90. Partol - policing
 91. Silt
 92. Lacking boat ramps
 93. Kawarau arm cleaned up
 94. Better sports facilities- basketball court, indoor netball stadium
 95. No cars on the lake front
 96. Access by butchers drive
 97. Native planting corridors
 98. Better wharfs
 99. Lakeside dining like old Cromwell but more - places to sit and have a drink by the lake at an establishment
 100. More family friendly areas
 101. More toilets
 102. Better boat ramps
 103. More things to jump off/swim
 104. More beach areas to enjoy as a family
 105. Better Bars/restaurants
 106. A swim lane !
 107. More cleared areas along lake shore to allow space for all to use with easy access
 108. Clean up around Cromwell
 109. Removal of silt
 110. Care for the visual appearance lakeside
 111. A waterslide into the lake
 112. Pontoon
 113. More swimming holes
 114. physical
 115. Clear lake edges- of lupins, briar etc
 116. Useable lakefront in Heritage Precinct
 117. More native trees, so bringing more native birds
 118. Access overgrown foreshore
 119. A committed Contact Energy (to actively meet its obligations)
 120. cleaner
 121. Congestion
 122. railroad network
 123. Boating/swimming at old town due to silt
 124. A management plan: eg, to manage the Kawarau Arm.
 125. Weed control in lake
 126. Clean marked swimming areas
 127. Full lake use (silting)
 128. Improved physical lake shoreline at beach areas of the lake.
 129. some narrowboats and places to moor them
 130. Clearing up of silt coming down towards Clutha River
 131. More fish
 132. Shore line around the lake Dunstan boat club
 133. Lots of restoration plantings, kowhai forest etc
 134. Programme to remove silt build up in upper lake areas.
 135. A ban on motorised sport. On the lake.
 136. Native plantings for shade, shelter and restoration of the natural environment

137. Lakebed and Shoreline Management Plan -to address the issues of silt deposition, lake weed and driftwood accumulation
- 138.
139. Larger and more dedicated swimming areas
140. Integrated pest control, all types
141. Regional hospital in Cromwell
142. easy unhindered water flow at Bannockburn - ie silt build up
143. Dredge
144. Better parking
145. Use of sand dredged to make man made beaches
146. Protect and enhance the bird life of the Bendigo Wetlands.
147. More Native planting
148. More toilets
149. Seats
150. Better shopping area
151. Shade
152. Regular Dredging
153. Clean water (purity)
154. More activities on the lake
155. Effective silt and weed management plan for the lake
156. Businesses facing the lake front
157. Multiple picnic use sites with feet friendly beaches
158. Consistent water quality in Kawarau Arm
159. Weed free
160. Larger and more swimming areas
161. Restrictions on motor boats
162. Restaurants
163. Lakefront animal exclusion (E.g. no goat zones)
164. control of vehicles
165. Purity
166. natural areas (replanting)
167. Better Maintenance of existing facilities
168. Sort the silting!
169. Active management of illegal freedom camping
170. Electric boats
171. cultural centre
172. Mountain bike tracks
173. euro-centric values down-graded and tangata whenua values increased in understanding and importance
174. Native species at waters edge
175. A chain of responsibility for maintaining the lake into the future
176. Fenced areas to exclude 'hoons' from destroying habitat. Nesting banded plovers need protecting. The natural landscape destroyed by unrestricted car access.
177. Rubbish facilities ..in Europe they even have poo bins for dog walkers
178. Less weed
179. Social areas, cafes shops etc
180. Lake clear of weeds - both in and on and including lupin willow and pine weeds
181. More weed control on the edges
182. Silt control
183. No amenity planting Cromwell to Pisa and beyond
184. More grassy areas by the lakeside
185. Responsible proactive maintenance/ management
186. Ongoing weed control
187. regular maintenance of popular beach areas
188. no weed
189. managed shoreline, that is clean and cared for
190. Rabbit control
191. Coordinated approach to management of area
192. Native vegetation
193. A lake that is free of weed and silt
194. Improved lakeshore and town connection, landscaping
195. More environmentally friendly vegetation planting.
196. More formal access or parking between McNulty's and Pisa
197. Swimming in Kawarau arm
198. Weed and silt controls
199. Better shopping area - the mall is not at all inviting
200. Safe swimming area away from boat traffic in Pisa Moorings
201. High indigenous biodiversity
202. community facilities such as a new hall and museum
203. Shaded areas for families
204. New mall
205. More user friendly beaches with sand not rock on them
206. Cafes shopping areas
207. Some nice lakeside areas with soft Peebles or sand
208. Decent management plan of lake use/ clean up/ lake weed

209. We need to get rid of the weed
 210. Cleared Shaded family area around the Lake
 211. better shopping
 212. More picnic tables to sit at by the lake/ bench seats
 213. More diversity
 214. BBQ's along the lake and at Pisa
 215. having a weed free area that is nice under foot to swim

216. Toilets
 217. Native plants
 218. A Marina
 219. more cycle routes
 220. Dredge
 221. More Wharfs
 222. medical centre
 223. water supply at camping area
 224. natural restoration programme
 225. more trees
 226. running water supply at Lowburn

227. more supermarkets
 228. nothing
 229. kids playground at Lowburn
 230. don't change
 231. Longer stay at camp area
 232. dump stations
 233. remove vegetation for fire control
 234. improve grass at lowburn
 235. nightly security checks at camping area

SECOND CHOICE

1. less weed
 2. Less Weed
 3. more benches
 4. Maybe a market
 5. a clean spot with no weed
 6. N/A
 7. Weather forecast
 8. N/A
 9. More shops/more restaurants
 10. paddle swan boats
 11. Have a child friendly space for kids under 8
 12. better wharf's
 13. A ladder at the wharf
 14. more rubbish bins
 15. more swimming spots
 16. taking better care of the grass near
 17. more swimming places to jump off
 18. Lake clean up days
 19. Another water park
 20. A slide
 21. idk
 22. Less lake weed
 23. Rubbish bins around swimming spots
 24. cleaning the lake
 25. More boat launches
 26. water slides
 27. playgrounds

28. lake food
 29. fishing spots???
 30. Management
 31. idk
 32. more boat moorings
 33. Bar/Restaurant with a view and access to the Lake with a playground
 34. Pergolas
 35. CODC more public input on permits for use of lake - houseboat, water park
 36. Relocate waterpark from prime swimming area that the community has been using for years (safest area for small children)
 37. Areas excluding machine powered boats/jetskiis for peaceful swimming. More regulation of boat speed in proximity to shoreline
 38. Clear jurisdiction of who is in charge
 39. Lakeside dining etc in old Cromwell - extend the wharf wider onto the lake to create a boardwalk type area

40. A plan for managing or mitigating the degradation of old Cromwell beaches and waterways
 41. allowing ill thought out commercial activities above the natural environment
 42. Restrictions on lakeside development rather than urban sprawl and encroachment
 43. Access for boats and picnics
 44. Lakeweed control other than with herbicide
 45. Decent beaches at Clyde end
 46. Not enough done with large logs after heavy rain
 47. Cleaner water with no weed
 48. Boat ramps inadequate
 49. New Camping Ground
 50. More shade - trees
 51. Parking
 52. places to sit - benches
 53. Less lake weed
 54. Mowing done more often
 55. Family fun areas playground in water

56. An outstanding camping /parking site
57. A plan for development of the Kawarau arm. Why not model what a flood will look like and plan landscaping to take advantage of the regain land that is to gained.
58. some amenities eg toilets would be nice
59. Positive commitment to undertake measures
60. Having a tidy lake frontage
61. Boating zones
62. Less weeds along shoreline
63. A tourist boat
64. Lake weed
65. More family activities
66. Nicer banks
67. Merging a new town centre with the Lake Dunstan asset
68. No robust weed removal program
69. Weed removal and Native plantings
70. Significantly more biodiversity - establishing native flora and fauna that was once in the area
71. More boat ramps
72. Keeping it tidy
73. Remove weeds from the lake
74. Lakeside maintenance
75. No weed
76. Swim lane
77. Weed reduction esp at Jacksons
78. able to sit by lake enjoying cafe food and drink
79. Rubbish bins through greenways and lake sides
80. More toilets and rubbish bins around the lake
81. Bigger safe swimming areas with pontoons
82. Beach areas
83. More resources to make sure its clean and keep it clean
84. More places to hang by the lake without weeds/bushes
85. More bbq areas attached
86. Weed
87. Swimming areas
88. A camp ground at low burn
89. New shopping complex
- 90.
91. Native planting
92. Weed free swimming around old cromwell
93. Education panels, could accompany native plantings
94. Weed and silt cleared
95. Bbqs
96. Better warfs
97. More babercues
98. More picnic tables/rubbish bins
99. Green grass inside the mall area
100. Moving the waterpark so swimmers can utilise that area again
101. Tidy up the lakeside and make more accessible
102. Removal of lake weed
103. More recreational pieces ie pontoons, maybe slides etc
104. Indoor basketball court that you can go to at any time
105. Play areas
106. Pontoons for jumping off
107. Cafe/restaurant/bar that overlooks lake apart from Old Cromwell
108. Upgraded mall
109. more public access and public space at the north end of the lake
110. Lake weed
111. More conservative growth plans
112. more rubbish bins
113. Noisy jet skis
114. no airport at tarras
115. Lake info for boating eg where silt beds are forming
116. Lake-edge boardwalks and promenades.
117. Keeping boat ramps & cycle trails tidy
118. Public free children's water playground
119. Regular debris clearing
120. We need more Homes!
121. attractive timber wharves for kiddies to fish and/or dive from.
122. Lots of native planting
123. Less weed
124. Weed
125. More public transport to prepare for lower carbon future
126. Undertake a headwater erosion control program and stop wilding pine eradication program
127. Better sunsets.
128. pop-up/summertime food and drink purveyors
129. Regular Boat-ramp Maintenance
130. More shade trees planted
131. Establish the region as a centre for horticultural excellence
132. rest stations - cluster of free water fountain to drink, kid playground and shade
133. Industry using silt and driftwood
134. Clear boat ramps

- 135. Clear Kowarau arm in front of old Cromwell
- 136. Hides built to view bird life
- 137. Swimming areas without weed
- 138. More seating
- 139. Less Freedom camping
- 140. More public toilets
- 141. Access
- 142. More fish
- 143. Cleaning up lake weed
- 144. A plan for managing or mitigating the degradation of old cromwell beaches and waterways
- 145. Poor water quality in the lake made good
- 146. Management of vegetation
- 147. Onshore plantings that befit the landscape/heritage/ecology
- 148. Clean water
- 149. Community minded events
- 150. Preserved areas for wildlife
- 151. Pubs
- 152. Foreshore native planting
- 153. endemic vegetation
- 154. Native fauna
- 155. community appreciation/involvement
- 156. Certain areas made pedestrian/bike friendly. No vehicles
- 157. Sort the weed
- 158. Enhance the pull over areas on the eastern edge of the lake ie seal the rutted entrances, picnic tables, bbqs and seating
- 159. ferries
- 160. local transport
- 161. Maintain a weed free lake
- 162. Environmental understanding, care and action toward enhancing our native, endemic species, flora and fauna
- 163. security of access to boat launching facilities and Old Cromwell beach
- 164. Designated parking areas for cars
- 165. Toilet facilities
- 166. Wakeboard park
- 167. Equipment for hire, paddle boards etc
- 168. Functioning boat parking and ramp - maybe at alpha st below the pump and near the jetty
- 169. More beach areas on both sides of the clyde end
- 170. Weed control
- 171. Get rid of lake weed around swimming areas... lowburn, Pisa inlets
- 172. Lakeside community centre / hub
- 173. More trees to sit under for shade
- 174. Bird refuge at top of lake
- 175. nicer beaches
- 176. bigger swimming areas
- 177. amenity, lakefront activities, for tourism/ water travel/water sports
- 178. Weed control
- 179. Growing community events
- 180. A town cycle network to connect to existing trail
- 181. More native vegetation planted around the lake
- 182. Enhanced protection and appreciation of local native flora and fauna.
- 183. Cutting of long dry grass verges in summer so not a fire risk.
- 184. Better maintained boat ramps
- 185. Boating in Kowarau Arm
- 186. Groomed and maintained picnic areas along the foreshore
- 187. More short term parking around the business areas and better provision for workers and business parking
- 188. Clean & tidy boat ramp area at Pisa Moorings with sealed road suitable for turning of boat trailers and consolidated neat parking with consideration/sensitivity to the residents water view from properties
- 189. High level of protection for Bendigo wetlands
- 190. walkways extended
- 191. Accessible toilets
- 192. Things I don't have to drive to Alex or qt for!
- 193. Good quality picnic and rest areas
- 194. More Swimming boardwalks
- 195. More boat ramps
- 196. Wharf reopened at old Cromwell useable again
- 197. More easy access place for picnics and older people
- 198. No Weed
- 199. better bar/hotels within the area
- 200. More signs to point out walking tracts
- 201. There could be so much more activities in old Cromwell
- 202. Tidy banks for better access
- 203. tidyer lake edge not sterile but user friendly shade trees!
- 204. Trees
- 205. More gravel beaches/gravel in first few m of lake bed

- 206. More toilets in popular areas
- 207. better water management areas eg soil retention and wetlands
- 208. Barge for bikes

- 209. Bbq amenities accessible only by boat
- 210. dump station
- 211. freedom camping for tents

- 212. water supply at camping area
- 213. more amenities
- 214. tidy up lowburn beach

THIRD CHOICE

- | | | |
|--|--|---|
| <ul style="list-style-type: none"> 1. more ducks 2. More water because it's pretty shallow in places 3. bird houses in trees 4. Maybe things related to Cromwell 5. a place to sale weed 6. N/A 7. Everything 8. N/A 9. More plants 10. fact plaques 11. have heaters that heat up the lake in winter so you can swim in winter 12. dog friendly 13. LESS WEED 14. I do not know 15. more seats or tables 16. places for fishing only 17. More pontouns 18. A bounce pillow where there is someone on the end and another person jumps off a high sort of slope and lands on the pillow then the person at the end flings off into the water 19. idk 20. More jetty's and places to jump in the water 21. Trees 22. More fun stuff 23. parks 24. hydro slides 25. areas without weed 26. Lake weed | <ul style="list-style-type: none"> 27. idk 28. better access to the lake / recreational areas 29. Beaches 30. develop silted area of Kawarau Arm into nature reserve 31. Introduce salmon back into the lake once weeds controlled 32. More of a 'park' area waterside in old cromwell 33. A really long pier 34. Better emergency lake access for cycle trails - particularly in the Cromwell Gorge 35. more intelligent outcomes from local bodies 36. Flow restoration in tributary streams 37. water based events, boating, fishing etc 38. Lots more plantings along the lake 39. Better toilet and changing facilities 40. Clean out the silting in the bay area 41. Safety for all using the lake fewer speeding boats and jetbikes 42. weed free areas 43. Sludge clean up old Cromwell 44. Toilets 45. Cleanliness | <ul style="list-style-type: none"> 46. drinking water 47. More shady trees at McNulty inlet. 48. More bbq areas with bbqs 49. Improved/Updated shopping precinct that's feels inviting 50. A coordinated plan for camping. Campers should be welcomed in the Lake Dunstan area, but capped in certain places. This would require new areas to be opened up with some facilities constructed. 51. maybe have some more swimming jettys etc since the water park has taken a large fun swimming area away,, which is ok they have done great things for themselves 52. Some sort of plan for silt 53. Having more accountability by the Shareholders and owners of the lake 54. Harbour master 55. Family areas where food and recreation come together 56. More water sports 57. Attractiveness and accesability of the lake 58. Whole of community participation |
|--|--|---|

59. New businesses only after public consult
60. Improved control of lake weed
61. No silt dredging program
- 62.
63. Less random camping in trees
64. Cafes, restaurants and playgrounds on the waterfront
65. More exotic tree planting, maples, conifers, rowans etc
66. Regulations on jet skis and activities
67. Weed mitigation
68. Bins for disposing of dog poo bags
69. Swim lane
70. pontoons with reasonable mooring strips that don't tear the side of the boat to bits
71. weedy bushes cleared to allow more space for boating etc
72. Empty rubbish bins & wheelie bins more often
73. Activities for school aged children.
74. Hire business for watersports equipment so anyone can get out on the lake and experience it
75. More trees & plant life
76. Clean silt from Bannockburn inlet
77. Sun shade trees
78. Toilets
79. Entertainment (bar/restaurants) next to lake
80. Planting for future shade
81. Better Main Street plan
82. Nicer swimming areas
83. Further family picnic / BBQ areas
84. More native planting
85. Better lake access
86. Trash bins
87. More trees
88. Festivals, concerts to celebrate and showcase the area
89. Removing weed from the inlet areas without upsetting ecosystems
90. Better swimming/diving/bombing areas for kids
91. Move water park from best spot on lake shore
92. Water condition
93. Zipline into the lake
94. Big slide
95. More boat ramps
96. More frequent clearing of thistles, weeds alongside cycle track
97. Planting of trees which will produce greenery and shade
98. More toilets, where there's plenty of public parking.
99. Overcrowded camping areas
100. Vibrant central business district
101. pride in area
102. Too many dogs and poo
103. proper water treatment systems so less septic run off
104. ?? What to do with mall
105. More intimate picnic areas like the AA used to create in the old days.
106. Commercial ferry/dining/boating rides
107. Weed clearing
108. Council/community board need to put more emphasis on forward planning
109. waterside cafes in areas apart from Old Cromwell
110. Just generally keeping it beautiful
111. Less silt
112. Silt build up
113. More trees of any kind to provide shaded outdoor walks & picnic areas in the summer
114. Strategic weed control program both in water and on foreshore
115. More ducks.
116. Lakeside maintenance of parking areas, proper and limited roadways, trees, weeds, grasses..etc
117. More toilet facilities
118. Free from rabbits
119. Lake side events - fun and informative (not just clean up)
120. Barge for bikers
121. Bars and entertainment venues at the lakeside
122. Care of shoreline
123. Trapping of predators
124. More care parking
125. Administration
126. Accessibility
127. Annual silt dredging/clean up
128. Better emergency lake access for cycle trails
129. Clear vision of the future - no gold mines; airports etc along lake
130. Public (vehicle) access to Kawarau arm
131. A clear plan for Kawarau Arm transformation
132. Ferry to Dunstan track
133. Speed limits on certain areas for boats and jet skis
134. More rubbish bins
135. Activity around the lake
136. bird sanctuaries
137. Picturesque
138. Active agency support (LINZ, Contact, ORC, CODC)

- 139. Signs for walkers/bikers informing them of common courtesy
- 140. Control of weed
- 141. More forest - kanuka particularly
- 142. Silt free lake
- 143. Accountability from businesses who use the area to make money. Need models which show that environment and economy aren't separate.
- 144. Maintenance of the shoreline beside the cycle track from Cornish Point to Old Cromwell
- 145. a safe bicycle track around McNulty Inlet
- 146. Picnic facilities to encourage family's/ groups
- 147. More planting of natives around the lakes edge
- 148. Picnic bbq areas. Rubbish bins
- 149. Predator -free areas fenced off and pests (plant and animal) removed natives protected
- 150. More picnic facilities like at the rowing club
- 151. Dredging silt build up
- 152. Seating, picnic areas, shade structures everywhere
- 153. Less sediment in Old Cromwell arm
- 190.
- 154. More accessible beach spaces
- 155. Lake front restaurant
- 156. better management of freedom camping areas
- 157. boat cruise/ shark things
- 158. clean water/ healthy plants
- 159. Upgrade of Old Cromwell area re silting up
- 160. Growth of town centre area for community hub
- 161. Care of the public land surrounding the lake
- 162. A lake front that has cafes and restaurants
- 163. Protection of our amazing natural amenity and swimming areas
- 164. Good parking places with access roads and no potholes
- 165. No silt from butchers boat ramp to old Cromwell
- 166. Looking at the Kawarau arm
- 167. A useable boat ramp in the Kawarau Arm
- 168. Larger areas of the lake edge looked after properly- grassed and mowed
- 169. Green space verge beside lake often overgrown with grass, consideration could be given to native wetland planted areas in succession around the lake- especially in front of the lake between Pisa Moorings and Cromwell
- 170. Native riparian planting
- 171. access to streams nad creeks
- 172. Changing facilities
- 173. Web and weather cams more places
- 174. Better parking
- 175. More toilets
- 176. Lake weed control
- 177. Manage the silting in the arm
- 178. Toilets
- 179. Outdoor seating in old Cromwell
- 180. More boat ramps
- 181. more consideration for dog areas so they can swim and run freely! without drawing attention to the dog haters.
- 182. Boat ramps
- 183. Swimming areas
- 184. More camping areas (serviced)
- 185. clear set back from development around the lake to ensure it remains a nice place to be
- 186. Sandy beaches
- 187. swimming pontoons
- 188. live music at the lake
- 189. water supply at lowburn camp

Q5 Is there anything else that you'd like to add in the context of working towards a successful future for Lake Dunstan, its surroundings and its community?

ANSWERED: 157

SKIPPED: 89

RESPONSES

1. ?
- 2.
3. DON'T LEAVE YOUR BLOODY RUBBISH BEHIND
4. not really
5. No
6. no
7. No
8. N/A
9. No
10. Have more cleanups to help keep lake dunstan clean & green
11. no
12. Nope
13. no
14. nope
15. nope
16. Boat ramps, more pontoons, and slides
17. No, I don't think so
18. no
19. No other than the things I've said lake Dunstan is the best
20. Everyone do their part so it can be enjoyable for everyone
21. water clean up community
22. no
23. I think having clean waters without litter is a big priority.
24. No
25. Toilets at the Dog collie club as that is the best shady beach spot for boating.
26. Non natives planted that can offer beauty and shade quickly.Natives
27. planted in the hard to reach areas.
27. Involve the community in lake decisions. So many bureaucratic arms, but locals need a much bigger say. Streamline all factions.
28. Investigation into an economically beneficial way to control lagorosiphon via private business venture-compost? Fermenting for methane for power?
29. Get some stuff happening on the lake. That would involve untangling and simplifying LINZ and contact's jurisdiction.
30. I think the waterpark is a good asset but it is in the wrong place, taking over a very popular and safe family swimming area which was used regularly by locals and visitors
31. more honesty and brain power by the Otago Regional Council, CODC and LINZ. Central seems to be run by country hicks
32. Recognise the lake ecosystem processes that provide for fish and wildlife, Manage actual'/potential water quality impacts in order to maintain high water quality
33. MANAGEMENT of picnic spots around the lake
34. especially near Cromwell town and up the lake
34. Balancing the natural values and people's use of a small lake, ie with increasing numbers of people here, the lake risks being "overused", polluted, lakeside trashed etc.
35. There needs to be decent beaches atClyde end. Rocks destroy boats, feet etc
36. Clean out the silt put a diversion panel in and direct the future silt down the old river bed . A big job but would be worth the effort for the future generations
37. THE Mohiki Trust is doing a great job.
38. Reinstate the awesome swim area at Lowburn. No other area sheltered from north winds. Mcnulty now dangerous mix of swimmers and boats.
39. When I say improve retail shopping I mean like a smaller Farmers store
40. Control of weed
41. Remove campground at lowburn or atleast make them pay. Restrictions on numbers also
42. maintenance of amenities maintenance of health of the lake use of water for

- irrigation for primary producers
43. Huge thanks to all of the volunteers that are working on the trust and are devoting time and energy to make our lake a better place.
 44. It's an awesome area to live in, we must all contribute to keep it that way.
 45. Better maintenance around lake shores, enforce maintenance contracts better
 46. more parking need boat ramps for example make a large concrete area in McNulty inlet for people to sit on and jump off etc
 47. A plan needs to be developed to remove sediment from Kawarau arm. If a common sense approach was taken and not a Corporate one, this would not be a major
 48. Local community should come first in all decisions
 49. More jetties boat ramps maybe a marina
 50. The area needs to be looked after and maintained for future generation, at the current rate it will no longer be a positive asset for Cromwell
 51. For the whole of the lake community to be engaged, not just Cromwell. And for better work with Linz to make the foreshore accessible and utilised
 52. Improved water quality
 53. Protection of natural areas. Enhanced
 54. protection for native wildlife.
 54. Why don't we have the infrastructure of places like Wanaka and Queenstown - with playgrounds, cafes and restaurants, as well as established native (and some carefully chosen exotic) plantings, etc around our lakefront? It seems like a massive missed opportunity.
 56. Really disappointed in location of waterpark, now located in what was the safest and sheltered swimming area around the lake. The relocated area to the south has no gravel beach, is really noisy, no parking and is overgrown with long grass - yuk.
 57. Some areas need a good tidy up and updating e.g. the concrete seats are awful and look like they've been there since the 80's. We need better picnic areas and designated areas for boaters and jet skiers, the Bannockburn inlet is not regulated at all during the Summer and it's very frustrating.
 58. Don't let it get into such a run down state that it becomes too expensive to correct it in the future.
 59. Need a swim lane
 60. The boulder beaches south of the confluence are terrible on feet and boats. Could some river gravel be imported? Eg from excavation of the Manuherikia. There are limited beach areas down at the dam end so it would be nice to make these beaches a pleasant experience to visit. You'll notice that boats avoid pulling into the pontoons too this is because the pontoon strips have nails etc coming out of them and damage boats. It would be good to upgrade these with boat friendly products.
 61. Would love to see old Cromwell lake front cleared so you are able to sit down there, or make more appealing to the public i.e. like Wanaka or QT it is a beautiful place and the lake frontage etc lets it down
 62. I would love it if the water park was moved to a different location giving us back full access to the lake
 63. It's been a lot better without so many freedom campers.
 64. Publish more details on the water quality
 65. Relevant parties taking accountability
 66. The lake doesn't work as a lake if it's full of silt or weed. The government dammed it, but, as a consequence we are responsible for the result, we all need to be responsible for the consequences- however there are organisations financially better off, the responsibility needs to be proportional. If you create a problem, even in the result of other

- benefits, those problems need to be solved. Essentially as we all know contact energy and government- take your portion of responsibility- I think you will find everyone else will step up when we see some ownership/action. It's not as if the economy or region hasn't benefited from the damming of the lake, be responsible in then taking care of it and appreciating what it provides us
67. We need an entertainment area (bars/restaurants) around lake (McNulty inlets?)
 68. Keep sections not so small. Keep up with building community spirit- so it's fun, family friendly, either free or affordable activities
 69. I believe the health of the lake should be the absolute goal. While pretty shiny things provide immediate satisfaction without a healthy body of water we have a disaster on our hands. We'll done to all, you are working towards a great future.
 70. Restore natives and birdlife
 71. Silting and lake weed need to be sorted. Weed at the top end and silting in the old Cromwell area
 72. Being involved in planting
 73. Get rid of the weed!
 74. Business/ tourism opportunities should be fostered and encouraged
 75. No
 76. Not at this time
 77. Keeping it clean for swimming
 78. Lack of Beach space, Needs lupin, some trees to allow beach access esp from Pisa Moorings end down to Lowburn area. Some grooming of beach banks as well. The beach is popular and needs more activity room.
 79. Overall, there is not nearly enough clearing of weeds around lakeside, roadside and along cycle track. The entire lake area could be so much more beautiful and have more access for picnics, swimming etc if the scub could be cleared. Particularly between Pisa Moorings and Cromwell.
 80. Well promoted activities and events, and their timing, relating to the care of the environment.
 81. The silt issue may eventually disappear from the Kawarau arm (when it becomes a river) but it won't go away. We therefore also need a silt management plan for the Clyde arm of the Lake
 82. I think any human development should take the natural environment, community and social aspects into better consideration and lengthen the longterm thinking.
 83. Lake is 1 of main attractions but most visitors go to old town, lake front there is disgusting now no swimming no boating. Stinky mud.
 84. Nope... so glad something has been started!
 85. Funds need to be well spent to get the best bang for the buck. Projects must have sustainable outcomes.
 86. I think the lake is a massive asset we need to promote it in the way of all sorts of water activity's to grow Cromwell .
 87. Our efforts should be concentrated on the things we can control. eg. the Kawarau arm will turn into a braided river, there is nothing we can do to stop that. Therefore minimal spend of time and money on tidy shoreline only
 88. better lakeweed control
 89. Educating locals on how to look after their space. We should all have ownership of looking after this space.
 90. What is the silt plan ?
 91. One of the official lake community is the boat club and a big tidy up around that area is required. It seems to be like the rest of the lake, built 30 years ago and forgotten
 92. Both DOC, ORC and power generators have been key contributors to these issues
 93. Te whataniwha...
 94. It doesn't have to cost that much for some proper maintenance!
 95. Identification and utilisation of the breadth of skills and experience

- that reside within the community that in turn can positively contribute to insuring that the qualities of Lake Dunstan can be enhanced and maintained into the future
96. Consultation of business activities access to the lake ie the water park. All ratepayers should have been consulted as a valuable family area was taken away with no exploration of impact.
97. Use the Lake's water effectively, not just for Contact Energy
98. easy access from greenways to the lake - More water sports around ie more sailing for locals school lessons take about 10 kids a term
99. Keep the lake lake not a river
100. Development of the area at McNulty into a high quality recreation and conference centre
101. I think the Water Park is brilliant. Its' new location makes it less noticeable from across the lake (SH8)
102. Less freedom camping
103. Fishing competitions etc
104. ferry/tour boats Dredging the silt and for gold
105. Develop working relationships with a diverse range of lake users, rowing clubs, water skiing clubs boating clubs, recreational clubs
106. Include the upstream communities (Tarras, Luggate)
107. Control of waterside trees, especially uncontrolled willow growth
108. I would love to see some restrictions around motor boats and jet skis. I love the quietness of the lake and watching the grebes and ducks go about their business. Having motor boats race up and down so close the shore really disturbs that. Especially around lowburn where there aren't any speed restrictions, the boats come so fast into shore. It also makes it quite dangerous for children swimming. I am originally from the north island where so many of our lakes are polluted and lacking wildlife, and in the summer filled with motor boats. I would hate to see that happen to this pristine lake.
109. Something needs to be done with the ramp on the kawerau arm , as other spots become more popular one of the main ramps should be accessible.
110. control of excessive vehicle activity to enable planting of natives and bird sanctuaries
111. The solution lies in forming a Lake Dunstan Working Group - multi agency
112. I like the idea of the native plantings around the lake but PLEASE don't remove the non native trees! There is room (& history) for both!
113. No groups, entities, council recognize that Lake Dunstan has for a long time been a valuable waterfowl hunting area. The construction of houses on lake terraces and development of cycle trails is eroding our ability to continue this sport. The lake is there for everyone to use so new developments must provide for this activity to continue. This is especially the case in the top of the lake above Smiths Way.
114. More co-ordination with existing community groups such as Mokihi Trust, Rotary, Lions, Fish and Game, Central Otago Environmental Society, Forest and Bird, that already work to improve the environment
115. I would like to ensure that Lake Dunstan area and waters are valued and not changed in any way just for the sake of change
116. Everyone's voice needs heard. Whose voices are missing from your survey/drop in sessions? The council needs to hear the dialogue that happens in this survey. Anyone who is deriving an income from this area should be signed up to a modeling program showing impact to the area, and offered options to either showcase/promote their positives, and or ways to mitigate /transition from degradation to a more

positive and balanced way of living and creating an income in the area. Bottom line - business has impact on the area in multiple layers employment, physical footprint, economic attitude, input back to the community for good, carbon footprint, 'leadership'. Council is included in this 'business bundle'. A scheme that allows businesses to invest back into their community, offset some of their negatives as they transition to low carbon ways, and given opportunity to up-skill in ways to bring about positive attitude and change as employers and leaders. These are programs which could run as offshoots to this trust. Promoting positivity through bringing a vision alive and creating 'opportunity'. More than planting lovely blocks of trees along the water front. More than reintroducing native species. More than creating areas to connect with the environs.

117. People/business respond to economic incentives/ initiatives.

118. We'd like to see firm collaboration between all the various organisations to ensure the lake is maintained well in the long term. The shoreline needs to be enhanced for family groups, both in and out of the water.

Responsibility needs to be clearly defined for accountability. We would like to see the basin of water at Old Cromwell maintained as the "jewel in the crown". It is the only one Cromwell has and is highly visible to locals and visitors. A safe swimming spot there should be maintained, no matter what the cost. While native planting can be desirable for some reasons, they can be drab in the winter and don't provide seasonal interest and are not as good for shade. Some deciduous plantings should be used around the amenity areas.

119. Most pressing is to remove lake weed on a regular basis, fence off vulnerable areas, get rid of weeds surrounding foreshore and keep cars off the edge of the lake.

120. The lake was developed (due in part by the Clyde power project) with the intention for the public to have access and enjoy in its natural state, trees planted for shelter from the elements. Why reinvent the wheel. I have no issue with beautification using selective rabbit resistant plantings (not always natives) not all previous lake shore plantings are native to our area? or suitable. Rabbits will always be an issue but selective planting will guarantee successful

growth and establishing suitable key areas. (HUGE expense rabbit proofing when it may be the humans that damage the fencing and hard work) Maintaining the lakeshore and creating access will be the lakes greatest success. Keep it simple. Sadly one key public spot is now occupied by giant inflatables. So many people have (varying age groups) have not visited this area this season. Commercial enterprise has won out. A huge lake and the best area for access has denied a broad group of age and stages to miss out! Where was the discussion group about that. Yes it's been great but the location needs addressing for varying reasons (traffic being just one). I would love to see paddle boarding / p class boats / wind surfing - kayaking all having an opportunity to be established. What an amazing view from yacht club how cool would it be to have a pop up ice cream / coffee / lemonade truck reestablish these and support areas. With a new walking / cycle track great opportunity's. Keep it simple keep it tidy keep it basic, keep it as natural in appearance as possible as that has always been its greatest asset!

121. I would like it to be a part of Cromwell. For people to be able to use if for

- businesses like Wanaka and Queenstown. More accessible areas for those who don't have boats. Pontoons etc.
122. A strategy is a great start
123. A few more lake side areas with bins. I have seen rubbish dumped by lazy holiday makers
124. Look at the waterfront area in lake wanaka. We should have a great resource but feel like the poor cousin. We have loads of space... use it better!
125. Business such as the water park should be carefully managed in terms of profit vs access to all
126. camp ground. play ground. educational info on native plants/ flora/ fauna/ history/ dam changes/ places to sit
127. Impediments to stop vehicles / motorbikes using the gravel banks around the McNulty Inlet area Cooperation with adjoining landowners re upgrades/ plantings
128. Future proofing for a low carbon, low consumption, climate change resilient community.
129. In addition to keeping the lake clear of weed and silt, Cromwell needs a lake front that has cafes, restaurants and shops. Lake Dunstan is the best thing about this area but we have no lake front that we can be proud of.
130. I feel like lake Dunstan is going through a transition from a dam lake to claiming it's own identity. Which we can help shape as a sustainable community asset.
131. Thumbs up for the kiwi waterpark. What an asset for the summer for kids and adults alike in a controlled environment. Lifeguards medical assistance and a timed session make for happy kids enjoying a hit central Otago kiwi summer. Well done for giving them a chance to operate at Lowburn. Long may they last there. It is a very big lake and their footprint is very small. More activities in a controlled manner like the management of this park should be encouraged
132. More removal of scrub from the lake edge to replace the easy access beach lost to the water park
133. Clean out some silt and establish picnic/swimming areas in Kawarau Arm
134. The silting in the old Cromwell area left and made into a park area in the future with the boat ramp extended into the river channel- we cannot fight the silt - let's use it to make a slightly flood prone park area with could be kept grassed (watered during the summer) and mowed.
135. Make a new lake edge at the edge of the natural channel
136. Most important to maintain high quality clean water
137. Consideration of the interaction between the Clutha Mataau and the lake and the potential for the lake to revert to a river over time
138. Heaps of people say it's a dead end town, like no nightlife or vibe or options, towns getting better but hopefully will be a great place to be!
139. It just needs work to keep it nice
140. Be great to keep the lake looking at its best in regards to weed, silt, debris etc, along with creating some more family areas lakeside
141. Open up the town centre, encourage business and stop monopoly of building ownership in the mall
142. Vision - clear clean water, easy and safe access for all including those ageing and with disability,
143. Lake Dunstan is our draw card, it is something very special for Cromwell. We have lost so much already with no camp ground etc, we need to keep this lake to be inviting and family friendly. Also please do not give our family friendly areas away to other businesses.
144. Cromwell is a beautiful town with so much potential. We are lucky to have the amazing walks and scenery. However, there is a lack for those that don't enjoy these

- activities. I feel that old Cromwell could be used in a better way, with more outdoor seating activities,/music that would bring more foot traffic
145. Seasonal commercial areas where companies can set up for summer season
146. I hope in the future the lake is not consumed with waterparks etc without consultation.
147. essentially capitalizing and stealing the best areas on the lake , this consent has opened up opportunities for others to do the same. Although the kids love it all the same, It could really let the vibes of a relaxed town become a commercialized nightmare for families trying to live a Kiwi lifestyle. the water park in chch donate trees everytime someone buys a ticket and gives back to the environment
- community they don't have a too bad you attitude. The built up silt along the bannockburn bridge is incredible, bouys need to be placed there, and have noticed grasses are growing really quick. It's actually been fun taking the kids there running on the sand and really warm swimming water. potentially too warm in spots for bacteria/algae so needs to be kept an eye on.
148. There needs to be recognition that the Lake is for all community use, it's important that one interest group don't dominate and further their own interests.
149. a thriving community not just reliant on tourism and no international jets
150. Be very careful of greed ... the waterpark will be the death of locals enjoying their own back yard in Summer
151. a larger NZMCA park nearer the town
152. water cleanliness. Manage lake use effectively. Develop a vibrant town centre. Accommodation for seasonal workers
153. needs more native trees and ecological restoration
154. Keep freedom camping open and incentivise people to keep the area clean and beautiful.
155. CFC is great for people who are looking for seasonal work
156. preserve the beauty of the lake and its' surrounds
157. more trees
158. more facilities for free camping
159. don't commercialise the town
160. minimise visual impact of any development
161. don't commercialise
162. keep vehicles away from toilet block no mattress vans
163. keep vehicles away from toilet block at lowburn campsite

APPENDIX 5 – LDCT 2021 SURVEY SUMMARY

<https://www.lakedunstan.org/stay-updated/results-from-julyaugust-biannual-survey>

APPENDIX 6 – CROMWELL COMMUNITY PLAN

<https://www.connectcromwell.nz/post/latest-cromwell-community-plan#:~:text=The%20Cromwell%20Community%20Plan%20is,as%20written%20and%20verbal%20feedback>

APPENDIX 7 – CROMWELL SPATIAL PLAN

https://www.codc.govt.nz/repository/libraries/id:2apsqkk8g1cxbyoqohn0/hierarchy/your-council/project-updates/cromwelleyetothefuture/documents/Cromwell%20Spatial%20Framework%20-%20Stage%201%20Spatial%20Plan%20Report_LR.pdf